

A D V A N C E D   S T A I N I N G   R E A G E N T S

# NOVOCASTRA

EXTENSIVELY TESTED, IHC ANTIBODIES AND REAGENTS



Advancing Cancer Diagnostics  
Improving Lives

*Leica*  
BIO SYSTEMS

# NOVOCASTRA IHC REAGENT SOLUTION

Behind every sample in your laboratory there is a patient needing answers. They are anxiously waiting for life-changing results. They rely on your quality for an accurate diagnosis. They depend on your efficiency to avoid delays. And they hope for increased speed to get critical answers, and start vital treatment, sooner.

Novocastra delivers a range of reagent solutions to suit your needs: IHC antibodies, detection systems and ancillary reagents designed for both fully automated and manual workflows, all to help you deliver high quality and reliable staining that supports patient care.



## IT'S YOUR CHOICE

### Robust Antibodies

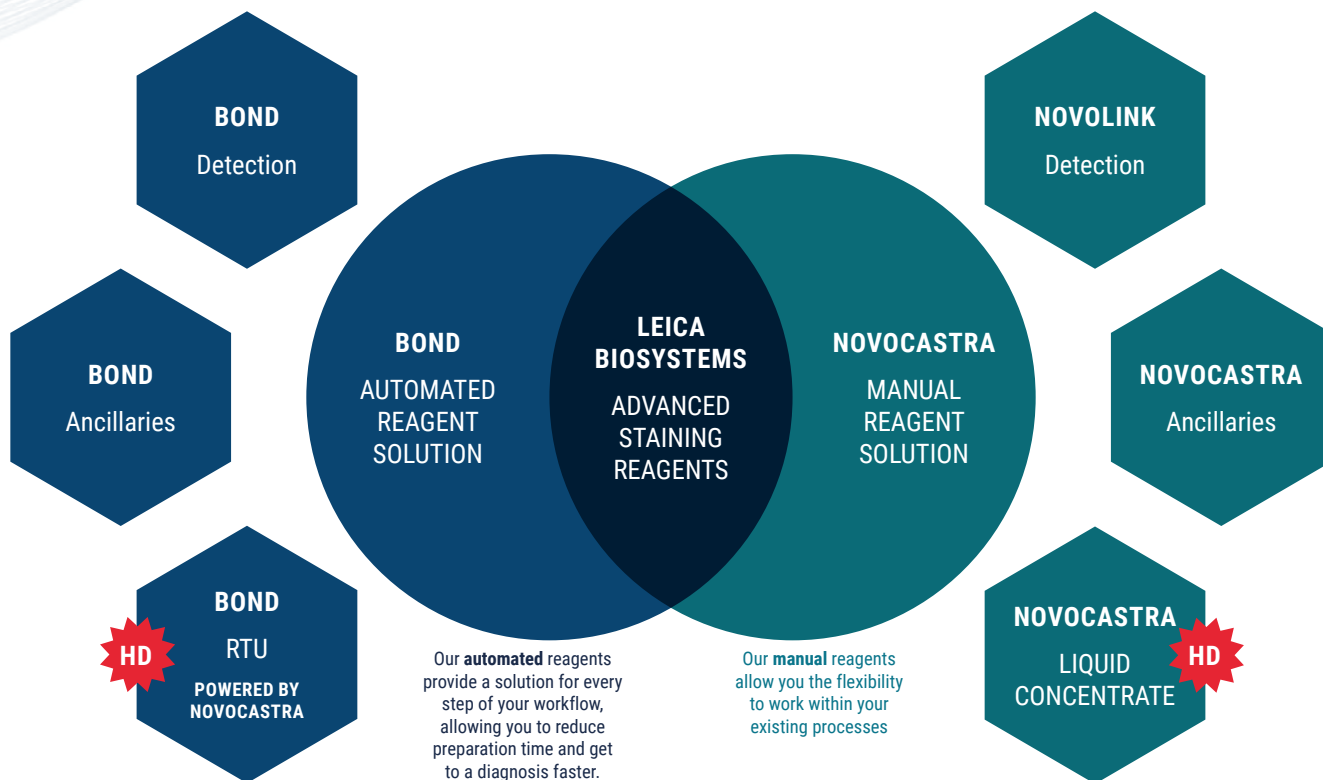
In-house development ensures high quality real-world performance.

### Automated Detection

Compact Polymer technology with small multifunctional linkers to enhance tissue penetration for visualization.

### A Complete System

Antibodies, diluent and detection all working together.



# NOVOCASTRA ANTIBODIES

Spanning across 14 pathologies, Leica Biosystems offers laboratories a comprehensive range of clinically relevant antibodies which can satisfy the demand for the most demanding workload. The Novocastra range of antibodies aims to provide labs with high quality, reliable staining that supports optimal patient care.



## A COMPREHENSIVE RANGE OF FORMATS

Novocastra HD introduces a comprehensive range of formats and sizes of antibodies from Leica Biosystems, making it easy for you to align the right products to your case-load and format preferences. The Novocastra range includes an extended range of liquid concentrates, and BOND Ready-to-Use products optimized for use on the fully-automated BOND staining platforms.

### NOVOCASTRA BOND RTU

BOND Ready-to-Use antibodies are optimized to deliver high quality staining results on BOND systems. This format eliminates variability in antibody preparation, reducing hands-on time. Pre-optimized reagents and automated protocols deliver consistent results you can rely on.



7 mL

13.5 mL

30 mL

### NOVOCASTRA LIQUID CONCENTRATES

The Novocastra liquid concentrated antibody range is an extensive collection of primary antibodies for IHC testing. Concentrated antibodies afford workflow flexibility, enabling users to optimize their protocols according to their pre-analytical conditions.



0.5 mL

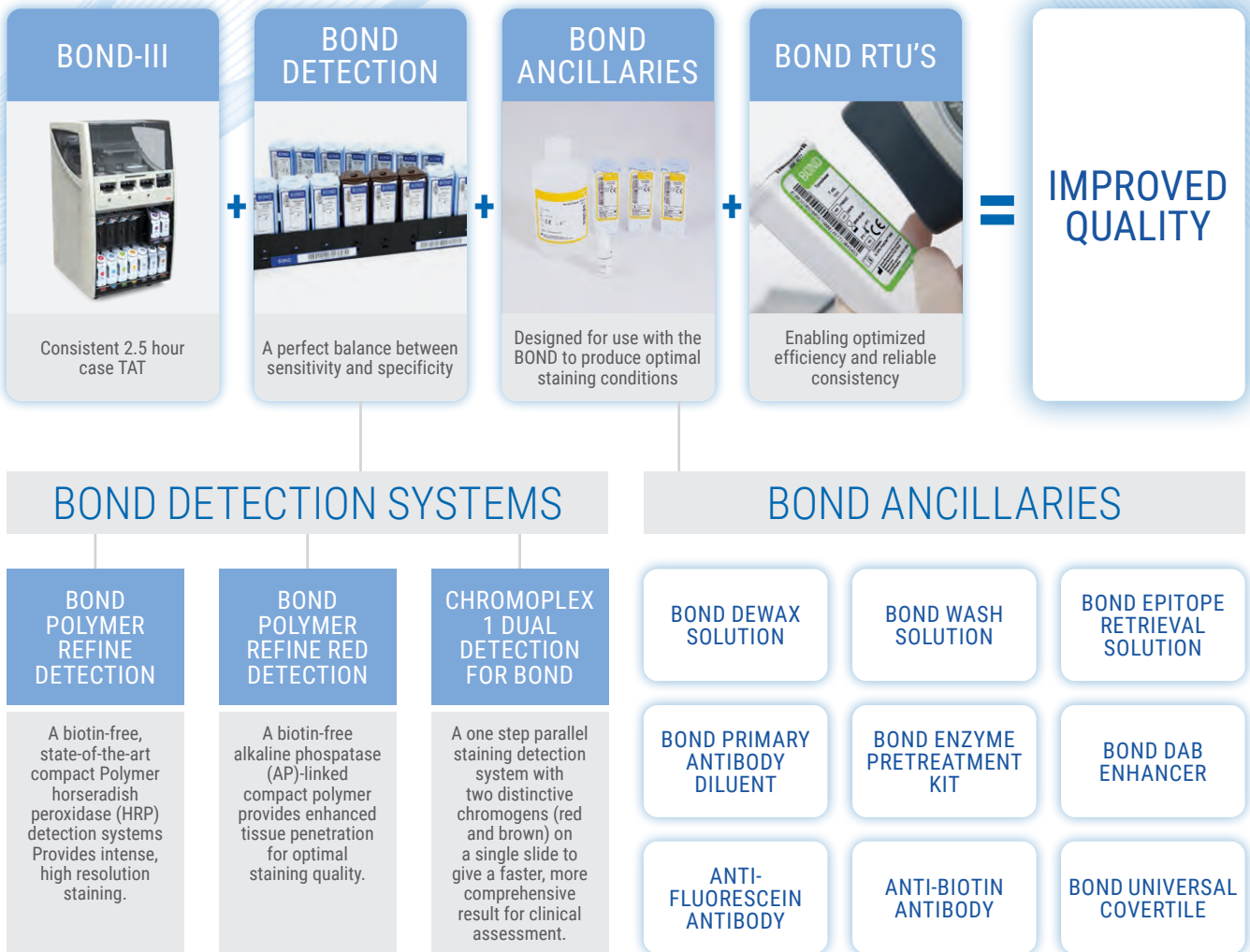
1 mL

2 mL

# AUTOMATED IHC

## A FULLY INTEGRATED, AUTOMATION SOLUTION

Designed and optimized to work together, the BOND platform coupled with the BOND detection systems, BOND ancillaries and Novocastra BOND RTU's provide the diagnostic confidence that pathologist's expect and the optimized efficiency lab's demand.



# MANUAL IHC

## NOVOLINK DETECTION SYSTEMS

The Novolink Polymer Detection Systems utilize a Compact Polymer technology. Therefore, the problem of non-specific staining that can occur with Streptavidin/Biotin detection systems due to endogenous biotin does not occur. Novolink Polymer Detection Systems contain pre-diluted, reagents in color coded bottles for ease of use and ultimate convenience.



### NOVOLINK MAX POLYMER DETECTION SYSTEM

1250 Tests

### NOVOLINK POLYMER DETECTION SYSTEM

250 or 500 Tests

### NOVOLINK MIN POLYMER DETECTION SYSTEM

50 Tests

PEROXIDASE  
BLOCK

PROTEIN  
BLOCK

HEMATOXYLIN

NOVOLINK  
POLYMER

NOVOLINK DAB  
(POLYMER)

## NOVOCASTRA DETECTION ANCILLARIES

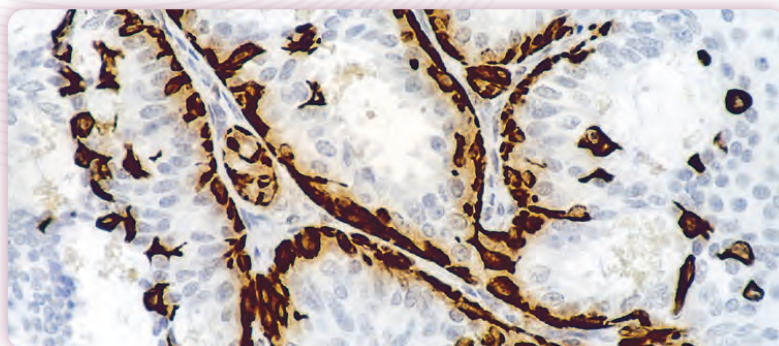
ANTIBODY DILUENT

ENZYME  
PROTEINASE K (IHC)

EPITOPE RETRIEVAL  
SOLUTIONS PH6

EPITOPE RETRIEVAL  
SOLUTIONS PH8

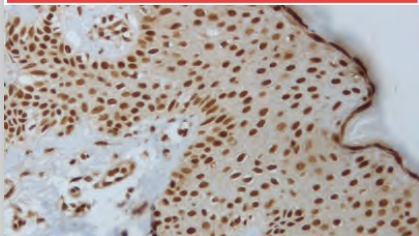
EPITOPE RETRIEVAL  
SOLUTIONS PH9



Novolink Polymer Detection System (RE7150-K) staining for Cytokeratin 5 with NCL-L-CK5 on breast carcinoma (paraffin section)

### Akt (Phosphorylated)

#### SPECIALIZED

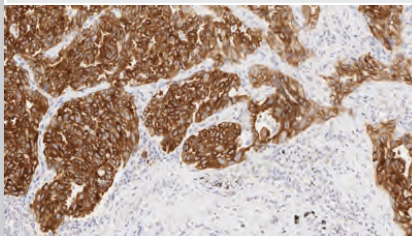


Human skin: immunohistochemical staining for Phosphorylated Akt. Akt (Phosphorylated) - Clone LP18

LP18	NCL-L-AKT-Phos	1 mL	-
------	----------------	------	---

### ALK

#### LUNG PATHOLOGY

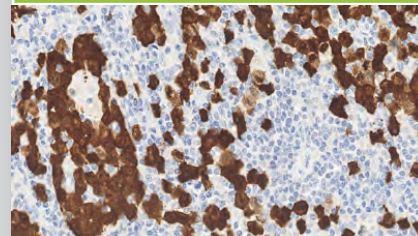


Human non-small cell lung carcinoma: immunohistochemical staining with ALK BOND Ready-to-Use Primary Antibody PA0831. ALK - Clone 5A4

5A4	PA0831	7 mL	HD
-----	--------	------	----

### ALK

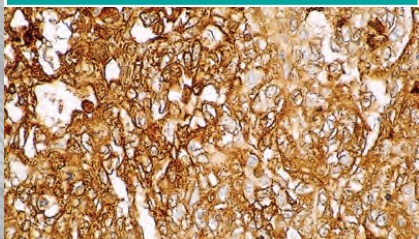
#### HEMATOPATHOLOGY



5A4	NCL-L-ALK	0.5 mL	HD
-----	-----------	--------	----

### Alpha Fetoprotein

#### GYNEPATHOLOGY

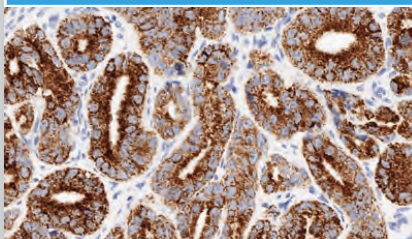


Human fetal liver: immunohistochemical staining for Alpha Fetoprotein. Note cytoplasmic staining of hepatocytes. Alpha Fetoprotein - Clone C3

C3	NCL-L-AFP	1 mL	-
	PA0963	7 mL	-

### Alpha-Methylacyl-CoA Racemase (AMACR, p504s)

#### UROPATHOLOGY



Human prostatic adenocarcinoma: immunohistochemical staining for AMACR - Clone EPMU1

EPMU1	NCL-L-AMACR	1 mL	-
	PA0210	7 mL	-

### Alpha-Synuclein

#### NEUROPATHOLOGY

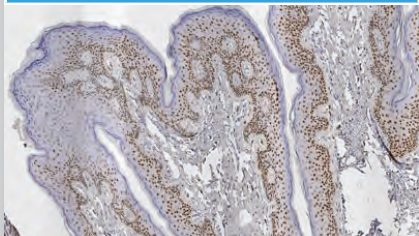


Human brain, Lewy body dementia: immunohistochemical staining for Alpha-Synuclein - Clone KM51

KM51	NCL-L-ASYN	1 mL	-
------	------------	------	---

### Androgen Receptor

#### UROPATHOLOGY

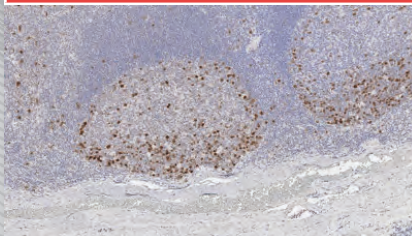


Human skin: immunohistochemical staining for Androgen Receptor. Note the nuclear staining of the epithelial cells. Androgen Receptor - Clone AR27

AR27	NCL-L-AR-318	1 mL	-
------	--------------	------	---

### Aurora Kinase 2

#### SPECIALIZED

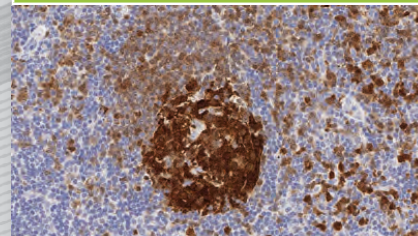


HeLa cell line: immunohistochemical staining for Aurora Kinase. Note nuclear staining of a proportion of cells. Aurora Kinase 2 - Clone JLM28

JLM28	NCL-L-AK2	1 mL	-
-------	-----------	------	---

### B Cell Specific Octamer Binding Protein-1 (BOB-1)

#### HEMATOPATHOLOGY



Human tonsil: immunohistochemical staining for BOB-1. Note nuclear and cytoplasmic staining of B cells with BOB-1 - Clone TG14

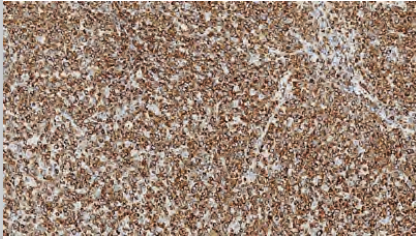
TG14	NCL-L-BOB-1	1 mL	-
	PA0558	7 mL	-

Products in this brochure are subject to regulatory approval. Please consult your Leica Biosystems Sales Representative for availability in your region.

IVD/CE labelled Class I antibodies are recommended for the detection of specific antigens related to the antibody in normal and neoplastic tissues, as an adjunct to conventional histopathology using non-immunologic histochemical stains.

### Bcl-2 Oncoprotein

#### HEMATOPATHOLOGY

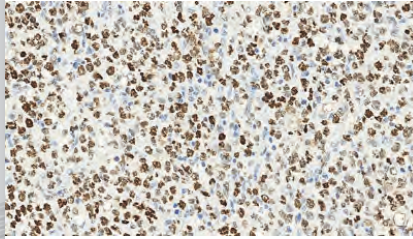


Human follicular lymphoma: immunohistochemical staining for Bcl-2 - Clone bcl-2/100/D5

<b>bcl-2/100/D5</b>	NCL-L-bcl-2	1 mL	HD
	PA0117	7 mL	HD

### Bcl-6 Oncoprotein

#### HEMATOPATHOLOGY

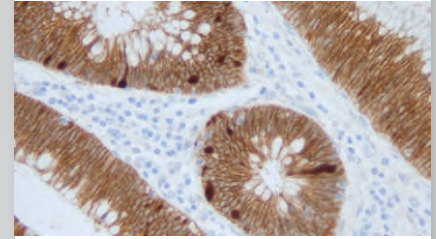


Human diffuse large B cell lymphoma: Immunohistochemical staining for Bcl-6 - Clone LN22

<b>LN22</b>	NCL-L-Bcl-6-564	1 mL	HD
	PA0204	7 mL	HD

### Beta-Catenin

#### SOFT TISSUE PATHOLOGY

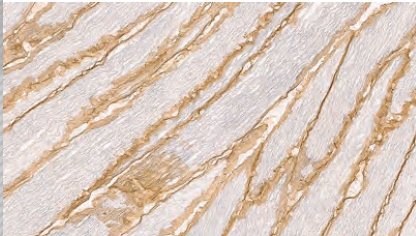


Human colon polyp: immunohistochemical staining for Beta-Catenin. Beta-Catenin - Clone 17C2

<b>17C2</b>	NCL-L-B-CAT	1 mL	-
	PA0083	7 mL	-

### Beta-Dystroglycan

#### MUSCLE PATHOLOGY

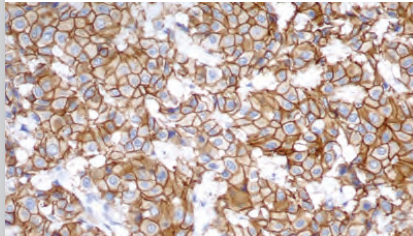


Human skeletal muscle: immunohistochemical staining on a frozen longitudinal section. Staining is localized in the sarcolemma of the fibers. Beta-Dystroglycan - Clone 43DAG1/8D5

<b>43DAG1/8D5</b>	NCL-b-DG	1 mL	-
-------------------	----------	------	---

### c-erbB-2 Oncoprotein (HER-2) Antibodies

#### BREAST PATHOLOGY

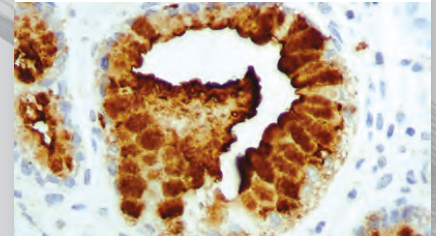


Human breast: invasive ductal carcinoma: immunohistochemical staining for c-erbB-2 Oncoprotein (HER-2) - Clone CB11

<b>CB11</b>	NCL-L-CB11	1 mL	-
	PA0983	7 mL	-
	PA0571	13.5 mL	-
<b>10A7</b>	NCL-L-CBE-356	1 mL	-

### CA19-9 (Sialyl Lewis a)

#### GASTROINTESTINAL PATHOLOGY

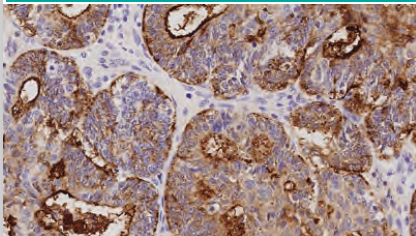


Colonic adenocarcinoma: immunohistochemical staining for Sialyl Lewis a antigen. CA19-9 - Clone C241:5:1:4

<b>C241:5:1:4</b>	NCL-L-CA19-9	1 mL	-
	PA0424	7 mL	-

### CA125 (Ovarian Cancer Antigen)

#### GYNEPATHOLOGY

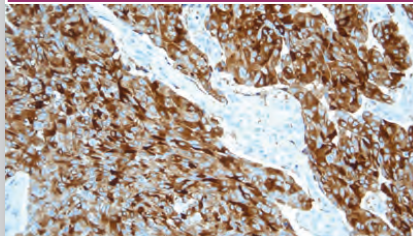


Human adenocarcinoma of endometrium: immunohistochemical staining on CA125 - Clone Ov185:1

<b>Ov185:1</b>	NCL-L-CA125	1 mL	HD
	PA0539	7 mL	HD

### Calcitonin

#### HEAD, NECK AND ENDOCRINE

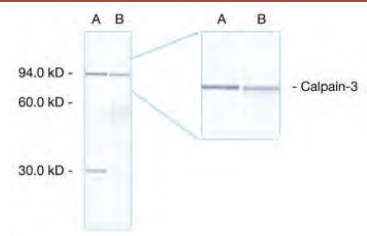


Human medullary thyroid carcinoma: immunohistochemical staining for Calcitonin. Calcitonin - Clone CL1948

<b>CL1948</b>	NCL-L-CALCITONIN	1 mL	-
	PA0406	7 mL	-

### Calpain Antibodies

#### MUSCLE PATHOLOGY



Western Blot: analysis of human skeletal muscle showing detection of calpain 3 proteins. Lane A, calpain 3 bands at 94 and 30 kD detected with CALP-2C4. Lane B, Calpain 3 bands at 94 and approximately 60 kD detected with CALP-12A2. Calpain - Clone Calp3d/2C4 Calpain - Clone Calp3c/12A2

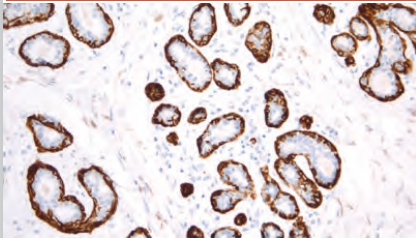
<b>Calp3c/12A2</b>	NCL-CALP-12A2	2.5 mL	-
<b>Calp3d/2C4</b>	NCL-CALP-2C4	2.5 mL	-

Products in this brochure are subject to regulatory approval. Please consult your Leica Biosystems Sales Representative for availability in your region.

IVD/CE labelled Class I antibodies are recommended for the detection of specific antigens related to the antibody in normal and neoplastic tissues, as an adjunct to conventional histopathology using non-immunologic histochemical stains.

### Calponin (Basic)

#### MUSCLE PATHOLOGY

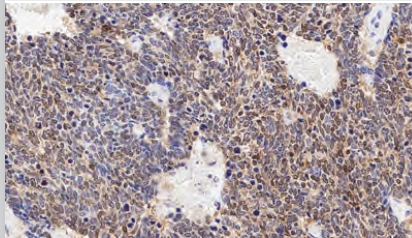


Human prostate: immunohistochemical staining for Calponin (Basic). Note staining of basal cells. Calponin (Basic) - Clone 26A11

<b>26A11</b>	PA0416	7 mL	-
--------------	--------	------	---

### Calpain Antibodies

#### LUNG PATHOLOGY

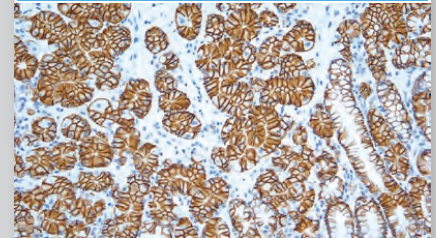


Western Blot: analysis of human skeletal muscle showing detection of calpain 3 proteins. Lane A, calpain 3 bands at 94 and 30 kD detected with CALP-2C4. Lane B, Calpain 3 bands at 94 and approximately 60 kD detected with CALP-12A2. Calpain - Clone Calc3d/2C4 Calpain - Clone Calp3c/12A2

<b>CAL6</b>	NCL-L-CALRET-566	1 mL	HD
	PA0346	7 mL	HD

### Carbonic Anhydrase IX

#### UROPATHOLOGY

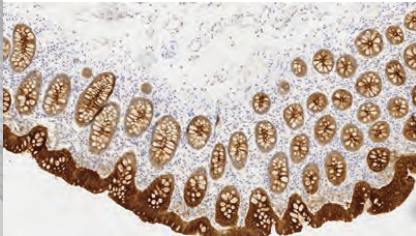


Human stomach: immunohistochemical staining for Carbonic Anhydrase IX. Note intense membrane and cytoplasmic staining of the deep glands. Carbonic Anhydrase IX - Clone TH22

<b>TH22</b>	NCL-L-CAIX	1 mL	-
-------------	------------	------	---

### Carcinoembryonic Antigen (CD66e)

#### GASTROINTESTINAL PATHOLOGY

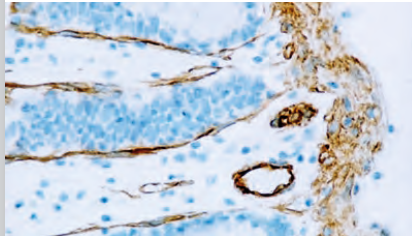


Human bowel: immunohistochemical staining for CD66e. Note cytoplasmic staining of epithelial cells. CD66e - Clone 12-140-10

<b>COL-1</b>	NCL-L-CEA-609	1 mL	HD
	PA0848	7 mL	HD
<b>12-140-10</b>	NCL-L-CEA-2	1 mL	-

### Caveolin-1

#### SPECIALIZED

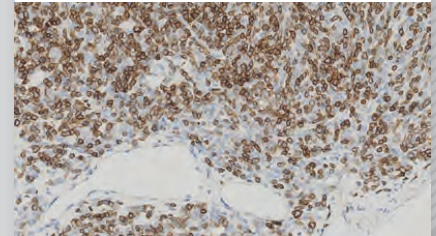


Normal human colon: immunohistochemical staining for Caveolin-1. Note cytoplasmic staining of smooth muscle and endothelium. Caveolin-1 - Clone 4D6

<b>4D6</b>	NCL-L-Caveolin-1	1 mL	-
------------	------------------	------	---

### CD1a

#### DERMATOPATHOLOGY

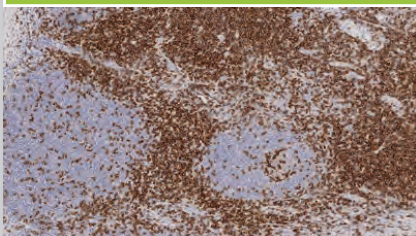


Human thymoma: immunohistochemical staining for CD1a - Clone MTB1

<b>MTB1</b>	NCL-L-CD1a-235	1 mL	HD
	PA0235	7 mL	HD

### CD2 (LFA-2)

#### HEMATOPATHOLOGY

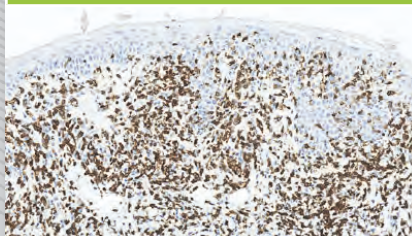


Human tonsil: immunohistochemical staining for CD2. Note membrane staining of T lymphocytes. CD2 - Clone 11F11

<b>11F11</b>	PA0271	7 mL	-
<b>AB75</b>	NCL-L-CD2-271	1 mL	-

### CD3

#### HEMATOPATHOLOGY

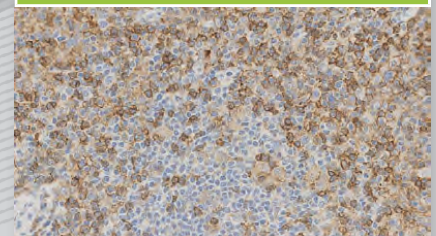


Human skin with mycosis fungoides: immunohistochemical staining for CD3. Note the extensively infiltrated positive cells. CD3 - Clone LN10

<b>LN10</b>	NCL-L-CD3-565	1 mL	HD
	PA0553	7 mL	HD
	PA0122	30 mL	HD

### CD4

#### HEMATOPATHOLOGY



T-Cell Lymphoma: immunohistochemical staining for CD4 - Clone 4812

<b>4812</b>	NCL-L-CD4-368	1 mL	HD
	PA0427	7 mL	HD

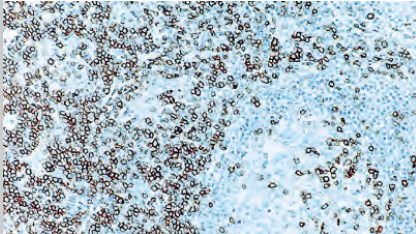
Products in this brochure are subject to regulatory approval. Please consult your Leica Biosystems Sales Representative for availability in your region.

IVD/CE labelled Class I antibodies are recommended for the detection of specific antigens related to the antibody in normal and neoplastic tissues, as an adjunct to conventional histopathology using non-immunologic histochemical stains.



**CD5**

**HEMATOPATHOLOGY**

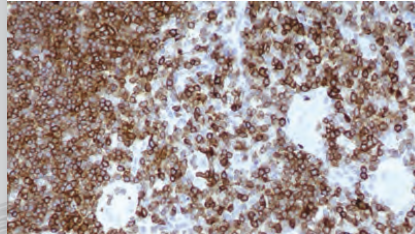


Human mantle cell lymphoma: immunohistochemical staining for CD5 - Clone 4C7

<b>4C7</b>	NCL-L-CD5-4C7	1 mL	HD
	PA0168	7 mL	HD

**CD7**

**HEMATOPATHOLOGY**

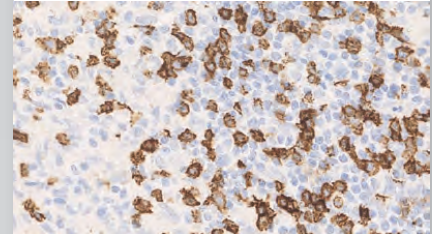


T cell lymphoma: immunohistochemical staining for CD7 - Clone LP15

<b>LP15</b>	NCL-L-CD7-580	1 mL	HD
	PA0266	7 mL	HD

**CD8**

**HEMATOPATHOLOGY**

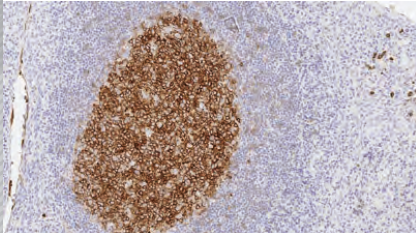


Human lymph node, T cell lymphoma: immunohistochemical staining for CD8. Note the neoplastic cells show a moderate to strong, distinct membrane staining reaction. CD8 - Clone 4B11

<b>4B11</b>	NCL-L-CD8-4B11	1 mL	HD
	PA0183	7 mL	HD

**CD10**

**HEMATOPATHOLOGY**

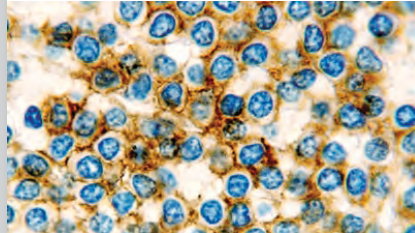


Human tonsil: immunohistochemical staining for CD10. Note membrane staining of germinal centre B cells. CD10 - Clone 56C6

<b>56C6</b>	NCL-L-CD10-270	1 mL	HD
	PA0270	7 mL	HD
	PA0131	30 mL	HD

**CD11c**

**HEMATOPATHOLOGY**

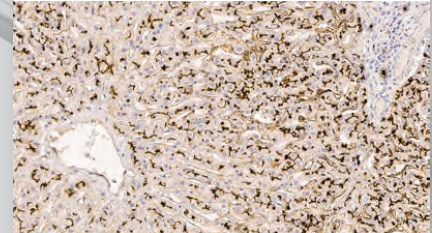


Human hairy cell leukemia: immunohistochemical staining for CD11c - Clone 5D11

<b>5D11</b>	NCL-L-CD11c-563	1 mL	HD
	PA0554	7 mL	HD

**CD13**

**HEMATOPATHOLOGY**

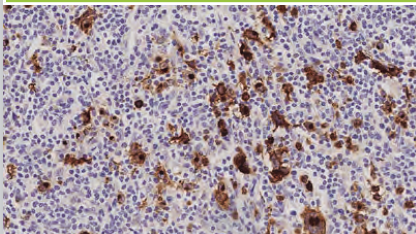


Human liver: immunohistochemical staining for CD13. Note staining of the bile canniculi. CD13 - Clone 38C12

<b>38C12</b>	NCL-L-CD13-304	1 mL	-
	PA0304	7 mL	-

**CD15**

**HEMATOPATHOLOGY**



Hodgkin's disease, mixed cellularity: immunohistochemical staining for CD15 - Clone MMA

<b>MMA</b>	NCL-L-CD15-605	1 mL	HD
	PA0473	7 mL	-

**CD16**

**HEMATOPATHOLOGY**

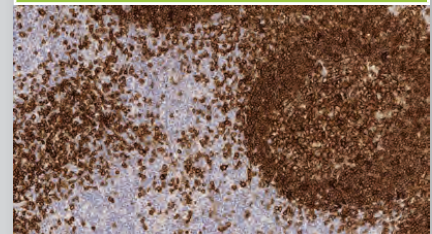


Human colon, ulcerative colitis: immunohistochemical staining for CD16 - Clone 2H7

<b>2H7</b>	NCL-L-CD16	1 mL	-
------------	------------	------	---

**CD19**

**HEMATOPATHOLOGY**



Human tonsil: immunohistochemical staining for CD19. Note membrane staining of B cells. CD19 - Clone BT51E

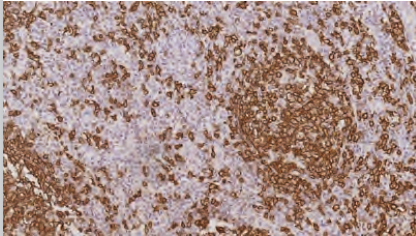
<b>BT51E</b>	NCL-L-CD19-163	1 mL	HD
	PA0843	7 mL	HD

Products in this brochure are subject to regulatory approval. Please consult your Leica Biosystems Sales Representative for availability in your region.

IVD/CE labelled Class I antibodies are recommended for the detection of specific antigens related to the antibody in normal and neoplastic tissues, as an adjunct to conventional histopathology using non-immunologic histochemical stains.

**CD20**

HEMATOPATHOLOGY

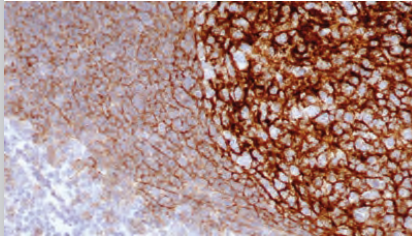


Follicular B cell lymphoma. immunohistochemistry staining for CD20 - Clone L26

<b>L26</b>	NCL-L-CD20-L26	1 mL	HD
	PA0200	7 mL	HD
	PA0359	30 mL	HD

**CD21**

HEMATOPATHOLOGY

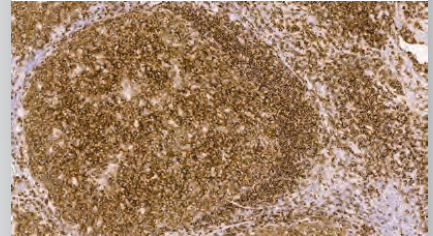


Human tonsil: immunohistochemical staining for CD21 antigen. Note intense membrane staining of follicular dendritic cells. CD21 - Clone 2G9

<b>2G9</b>	NCL-L-CD21-2G9	1 mL	-
	PA0171	7 mL	-

**CD22**

HEMATOPATHOLOGY

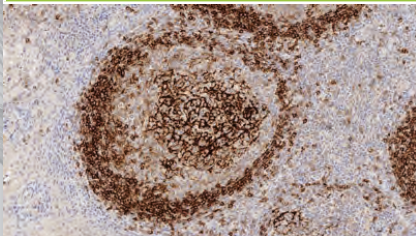


Human tonsil: immunohistochemical staining for CD22. Note the mantle zone is staining stronger than the germinal centre. CD22 - Clone FPC1

<b>FPC1</b>	PA0249	7 mL	-
-------------	--------	------	---

**CD23**

HEMATOPATHOLOGY

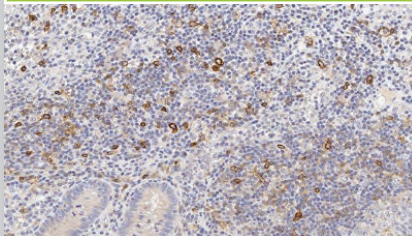


Human tonsil: immunohistochemical staining for CD23. Note intense staining of follicular dendritic cell network and weaker staining of mantle zone cells. CD23 - Clone 1B12

<b>1B12</b>	NCL-L-CD23-1B12	1 mL	HD
	PA0169	7 mL	HD

**CD25**

HEMATOPATHOLOGY

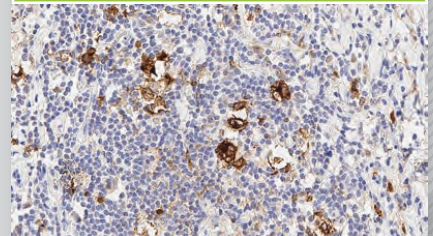


Human appendix: immunohistochemical staining for CD25. Note staining of activated lymphocytes. CD25 - Clone 4C9

<b>4C9</b>	PA0305	7 mL	-
------------	--------	------	---

**CD30**

HEMATOPATHOLOGY

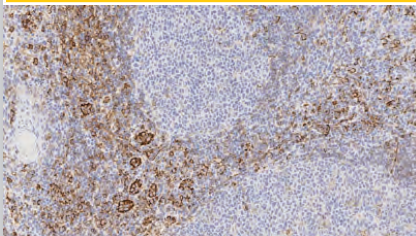


Human lymph node, nodular sclerosing Hodgkin's disease: immunohistochemical staining for CD30 - Clone JCM182

<b>JCM182</b>	NCL-L-CD30-591	1 mL	-
	PA0790	7 mL	-

**CD31 (PECAM-1)**

SOFT TISSUE PATHOLOGY

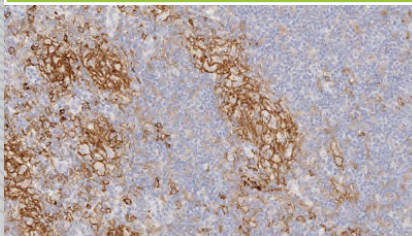


Human lymphoma: immunohistochemistry staining for CD31 - Clone JC70A

<b>JC70A</b>	NCL-L-CD31-607	1 mL	HD
	PA0414	7 mL	HD
<b>1A10</b>	PA0250	7 mL	-

**CD33**

HEMATOPATHOLOGY

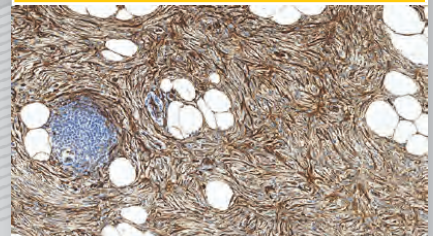


Human lymph node, anaplastic lymphoma: immunohistochemical staining for CD33 - Clone PWS44

<b>PWS44</b>	NCL-L-CD33	1 mL	HD
	PA0555	7 mL	HD

**CD34 (Endothelial Cell Marker)**

SOFT TISSUE PATHOLOGY



Dermatofibrosarcoma protuberans: immunohistochemical staining for CD34 - Clone QBEnd/10

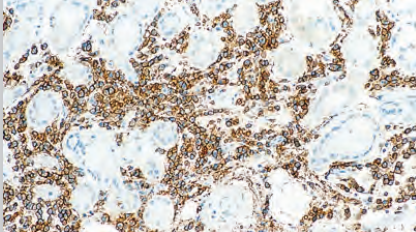
<b>QBEnd/10</b>	NCL-L-END	1 mL	HD
	PA0212	7 mL	HD
	PA0354	30 mL	HD

Products in this brochure are subject to regulatory approval. Please consult your Leica Biosystems Sales Representative for availability in your region.

IVD/CE labelled Class I antibodies are recommended for the detection of specific antigens related to the antibody in normal and neoplastic tissues, as an adjunct to conventional histopathology using non-immunologic histochemical stains.

**CD38**

HEMATOPATHOLOGY

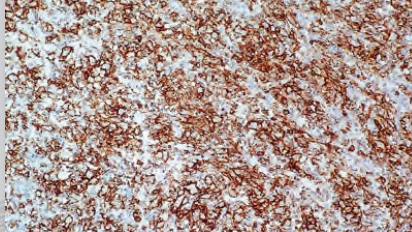


Chronically inflamed human bronchus: immunohistochemical staining CD38 - Clone SPC32

SPC32	NCL-L-CD38-290	1 mL	-
-------	----------------	------	---

**CD43**

HEMATOPATHOLOGY

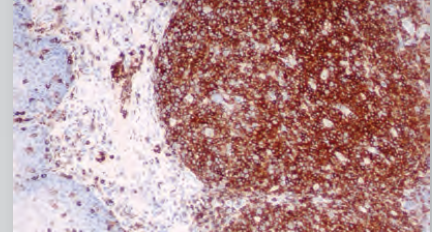


Diffuse large B cell lymphoma: immunohistochemical staining for CD43 - Clone MT1

MT1	NCL-L-MT1	1 mL	-
	PA0938	7 mL	-

**CD45**

HEMATOPATHOLOGY

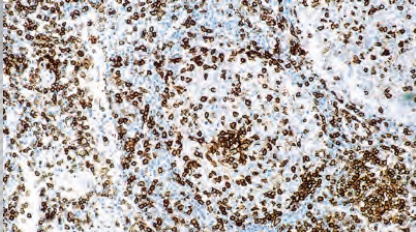


Human tonsil: immunohistochemical staining of CD45 or leukocyte common antigen (LCA) in various hematolymphoid cells. CD45 - Clone X16/99

X16/99	NCL-L-LCA	1 mL	HD
	PA0042	7 mL	HD

**CD45RO**

HEMATOPATHOLOGY

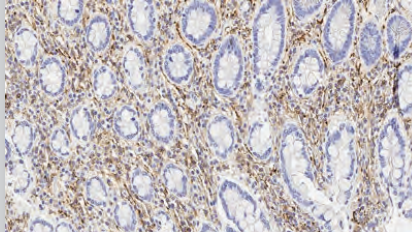


Human tonsil: immunohistochemical staining with CD45RO - Clone UCHL1

UCHL1	NCL-L-UCHL1	1 mL	-
	PA0146	7 mL	-

**CD56 (NCAM)**

HEMATOPATHOLOGY

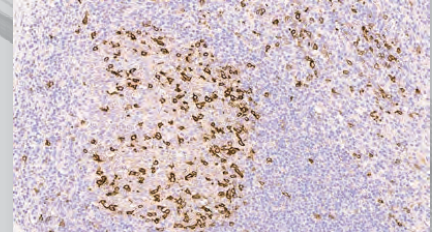


Human tonsil: immunohistochemical staining for CD56. Note the NK cells and CD4/CD8 double positive T cells show a weak to moderate and distinct membrane staining reaction while the majority of lymphocytes are unstained. CD56 - Clone CD564

CD564	NCL-L-CD56-504	1 mL	HD
	PA0191	7 mL	HD

**CD57**

HEMATOPATHOLOGY

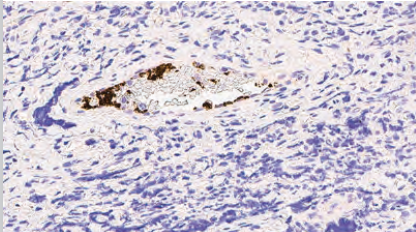


Human tonsil: immunohistochemical staining of T lymphocytes. CD57 - Clone NK-1

NK-1	PA0443	7 mL	-
------	--------	------	---

**CD61 (GPIIb)**

HEMATOPATHOLOGY

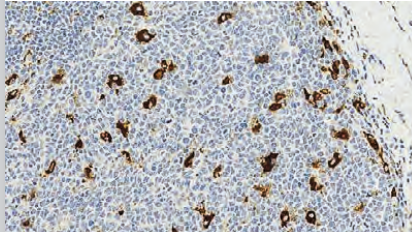


Human tonsil: immunohistochemical staining of CD61 antigen (GPIIb) on platelets within the blood vessel. CD61 (GPIIb) - Clone 2f2

2f2	PA0308	7 mL	-
-----	--------	------	---

**CD68**

HEMATOPATHOLOGY

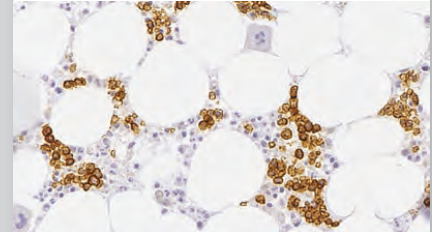


Human tonsil: immunohistochemical staining for CD68. Note the germinal centre macrophages show a strong cytoplasmic staining reaction, while the interfollicular macrophages show correct weak to moderate staining reaction. CD68 - Clone 514H12

514H12	NCL-L-CD68	1 mL	HD
	PA0273	7 mL	HD

**CD71**

SPECIALIZED



Human bone marrow: immunohistochemical staining for CD71. Note membrane staining of erythroid progenitor cells. CD71 - Clone 10F11

10F11	NCL-L-CD71-309	1 mL	-
-------	----------------	------	---

Products in this brochure are subject to regulatory approval. Please consult your Leica Biosystems Sales Representative for availability in your region.

IVD/CE labelled Class I antibodies are recommended for the detection of specific antigens related to the antibody in normal and neoplastic tissues, as an adjunct to conventional histopathology using non-immunologic histochemical stains.

**CD79a**

**HEMATOPATHOLOGY**

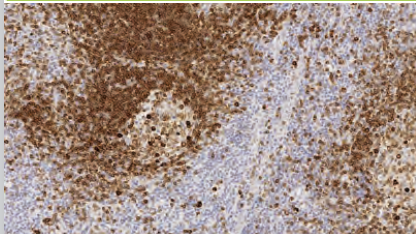


Human diffuse large B cell lymphoma: immunohistochemical staining for CD79a - Clone JCB117

<b>JCB117</b>	NCL-L-CD79a-599	1 mL	HD
	PA0599	7 mL	-

**CD79b**

**HEMATOPATHOLOGY**

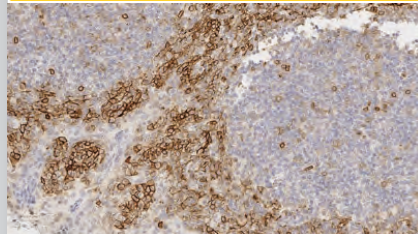


Human tonsil: immunohistochemical staining for CD79b. Note intense membrane staining of B cells. CD79b - Clone JS01

<b>JS01</b>	NCL-L-CD79b	1 mL	-
-------------	-------------	------	---

**CD99**

**SOFT TISSUE PATHOLOGY**

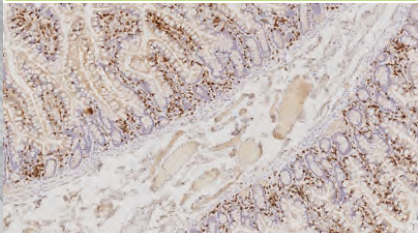


Human tonsil: immunohistochemical staining for CD99. Note membrane staining of vessel endothelium and a subpopulation of lymphocytes. CD99 - Clone PCB1

<b>PCB1</b>	NCL-L-CD99-187	1 mL	HD
-------------	----------------	------	----

**CD103**

**HEMATOPATHOLOGY**



Human normal small bowel immunohistochemistry staining of CD103. Note membrane and cytoplasmic staining of Intraepithelial T lymphocytes. CD103 - Clone EP206

<b>EP206</b>	PA0374	7 mL	-
--------------	--------	------	---

**CD117**

**GASTROINTESTINAL PATHOLOGY**

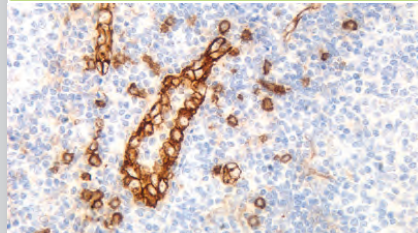


Human colon, gastrointestinal stromal tumor: immunohistochemical staining for CD117 - Clone EP10

<b>EP10</b>	NCL-L-CD117-032	1 mL	HD
	PA0007	7 mL	HD
<b>T595</b>	NCL-L-CD117	1 mL	-

**CD123**

**HEMATOPATHOLOGY**

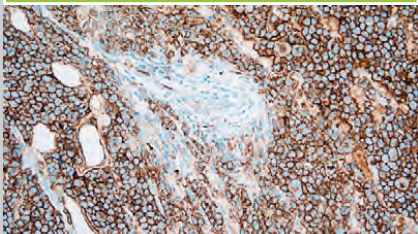


Human high walled venule endothelium and plasmacytoid dendritic cells: immunohistochemical staining for CD123 - Clone BR4MS

<b>BR4MS</b>	NCL-L-CD123	1 mL	-
--------------	-------------	------	---

**CD138 (Syndecan 1)**

**HEMATOPATHOLOGY**

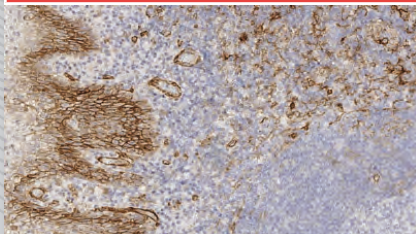


Plasmacytoma: immunohistochemical staining for CD138 - Clone MI15

<b>MI15</b>	PA0088	7 mL	HD
-------------	--------	------	----

**CD141 (Thrombomodulin)**

**SPECIALIZED**

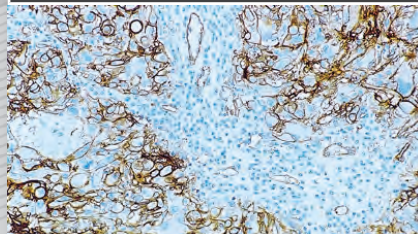


Human tonsil: immunohistochemical staining for CD141. Note membrane staining of the basal cells of the squamous mucosa, endothelium and a subset of dendritic cells. CD141 - Clone 15C8

<b>15C8</b>	NCL-L-CD141	1 mL	-
-------------	-------------	------	---

**CD146 (MCAM)**

**DERMATOPATHOLOGY**



Human malignant melanoma: immunohistochemical staining for CD146 - Clone N1238

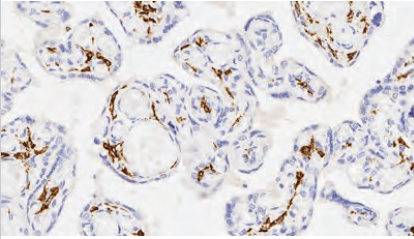
<b>N1238</b>	NCL-L-CD146	1 mL	-
--------------	-------------	------	---

Products in this brochure are subject to regulatory approval. Please consult your Leica Biosystems Sales Representative for availability in your region.

IVD/CE labelled Class I antibodies are recommended for the detection of specific antigens related to the antibody in normal and neoplastic tissues, as an adjunct to conventional histopathology using non-immunologic histochemical stains.

**CD163**

**HEMATOPATHOLOGY**

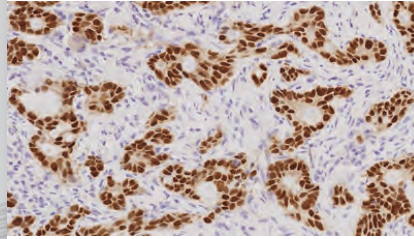


Human placenta: immunohistochemical staining for CD163. Note cytoplasmic staining of Hofbauer cells. CD163 - Clone 10D6

<b>10D6</b>	NCL-L-CD163	1 mL	HD
	PA0090	7 mL	HD

**CDX2**

**GASTROINTESTINAL PATHOLOGY**

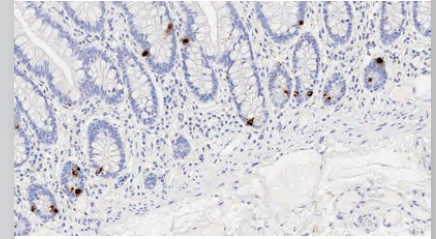


Human colonic adenocarcinoma: immunohistochemical staining for CDX2 - Clone EP25

<b>EP25</b>	PA0375	7 mL	HD
-------------	--------	------	----

**Chromogranin A**

**HEAD, NECK AND ENDOCRINE**

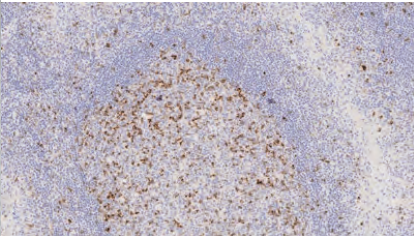


Human small bowel: immunohistochemical staining for Chromogranin A. Note cytoplasmic staining of neuroendocrine cells. Chromogranin A - Clone 5H7

<b>5H7</b>	NCL-L-CHROM-430	1 mL	HD
	PA0515	7 mL	HD

**CTLA-4**

**IMMUNO ONCOLOGY**

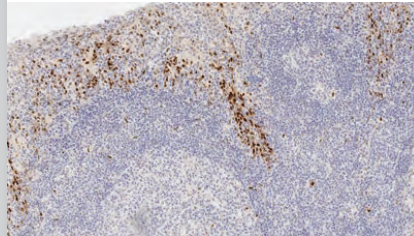


Human tonsil, immunohistochemical staining for CTLA-4 - Clone CAL49

<b>CAL49</b>	PA0181	7 mL	-
--------------	--------	------	---

**Cyclin D1**

**HEMATOPATHOLOGY**

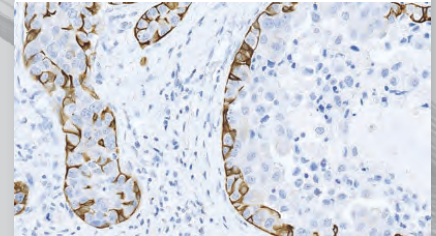


Human mantle cell lymphoma: immunohistochemical staining for Cyclin D1: clone EP12

<b>EP12</b>	PA0046	7 mL	HD
<b>P2D11F11</b>	NCL-L-CYCLIND1-GM	1 mL	-

**Cytokeratin 5**

**UROPATHOLOGY**

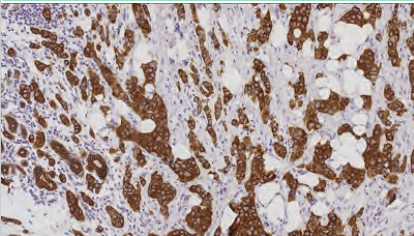


Human breast, ductal carcinoma-in situ: immunohistochemical staining for Cytokeratin 5 - Clone XM26

<b>XM26</b>	PA0468	7 mL	HD
-------------	--------	------	----

**Cytokeratin 7**

**TUMOR DIFFERENTIATION**

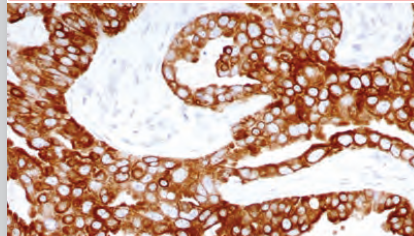


Invasive breast carcinoma: immunohistochemical staining for Cytokeratin 7 - Clone RN7

<b>RN7</b>	NCL-L-CK7-560	1 mL	HD
	PA0942	7 mL	HD
	PA0138	30 mL	HD
<b>OV-TL 12/30</b>	NCL-L-CK7-OVTL	1 mL	-

**Cytokeratin 8**

**SPECIALIZED**

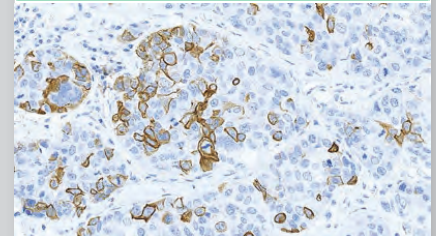


Immunohistochemical staining for Cytokeratin 8 - Clone TS1

<b>TS1</b>	NCL-L-CK8-TS1	1 mL	-
	PA0567	7 mL	-

**Cytokeratin 14**

**TUMOR DIFFERENTIATION**



Invasive breast cancer: immunohistochemical staining for the Cytokeratin 14 - Clone LL002

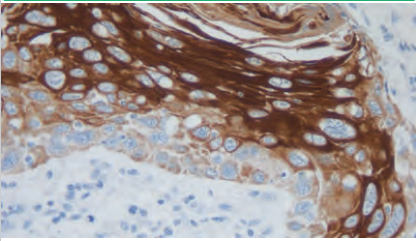
<b>LL002</b>	NCL-L-LL002	1 mL	HD
	PA0074	7 mL	HD

Products in this brochure are subject to regulatory approval. Please consult your Leica Biosystems Sales Representative for availability in your region.

IVD/CE labelled Class I antibodies are recommended for the detection of specific antigens related to the antibody in normal and neoplastic tissues, as an adjunct to conventional histopathology using non-immunologic histochemical stains.

### Cytokeratin 17

#### TUMOR DIFFERENTIATION

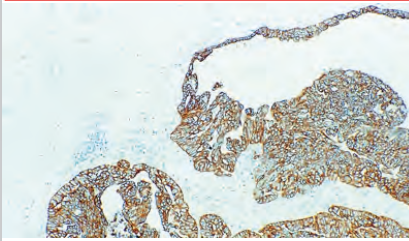


Human squamous cell carcinoma, floor of the mouth: immunohistochemical staining for Cytokeratin 17 - Clone E3

<b>E3</b>	NCL-L-CK17	1 mL	-
	PA0114	7 mL	-

### Cytokeratin 18

#### SPECIALIZED

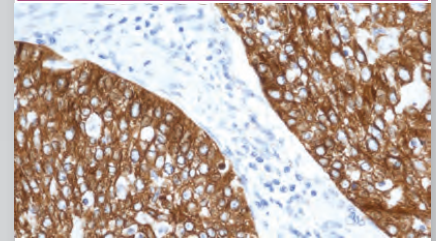


Human colonic adenocarcinoma: immunohistochemical staining for Cytokeratin 18 - Clone DC-10

<b>DC-10</b>	NCL-L-CK18	1 mL	-
--------------	------------	------	---

### Cytokeratin 19

#### HEAD, NECK AND ENDOCRINE

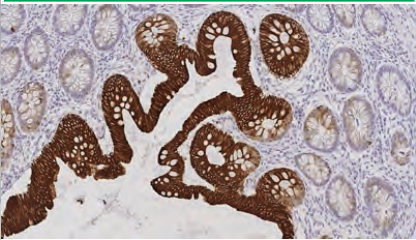


Human rectal adenocarcinoma: immunohistochemical staining for Cytokeratin 19 - Clone b170

<b>b170</b>	NCL-L-CK19	1 mL	-
	PA0799	7 mL	-

### Cytokeratin 20

#### TUMOR DIFFERENTIATION

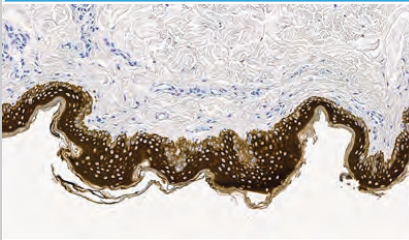


Human colon: immunohistochemical staining for Cytokeratin 20. Note the intense staining of surface mucosa. Cytokeratin 20 - Clone Ks.20.8

<b>Ks20.8</b>	NCL-L-CK20	1 mL	HD
	PA0022	7 mL	HD
	PA0037	30 mL	HD
<b>PW31</b>	NCL-L-CK20-561	1 mL	-

### Cytokeratin (5/6/18)

#### UROPATHOLOGY

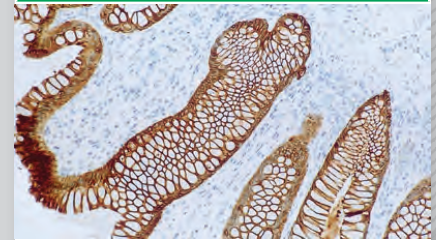


Human skin: immunohistochemical staining of LP34 (cytokeratins 5/6/18) localized throughout the epidermis, with the strongest staining in the stratum spinosum. There is an absence of staining in the dermis. Cytokeratin (5/6/18) - Clone LP34

<b>LP34</b>	NCL-L-LP34	1 mL	-
-------------	------------	------	---

### Cytokeratin (8/18)

#### TUMOR DIFFERENTIATION

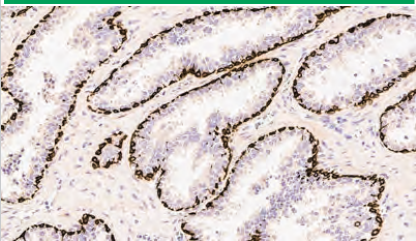


Colon mucosa: immunohistochemical staining for Cytokeratin 8/18 - Clone 5D3

<b>5D3</b>	NCL-L-5D3	1 mL	-
	PA0067	7 mL	-

### Cytokeratin, Multi (1/5/10/14)

#### TUMOR DIFFERENTIATION

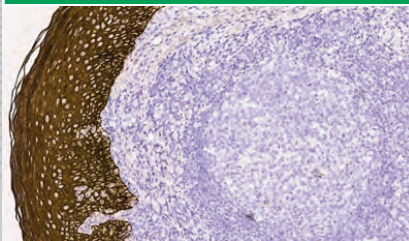


Human prostate: immunohistochemical staining of the basal cells of the prostate with anti-cytokeratin (high molecular weight) antibody. Cytokeratin, Multi (1/5/10/14) - Clone 34C $\epsilon$ sE12

<b>34BetaE12</b>	PA0134	7 mL	-
------------------	--------	------	---

### Cytokeratin, Multi (4/5/6/8/10/13/18)

#### TUMOR DIFFERENTIATION

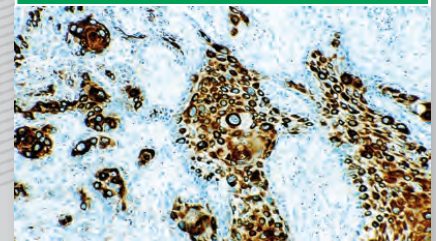


Human tonsil: immunohistochemical staining for cytokeratin, Multi. Note the cytokeratins demonstrated in stratified squamous epithelium. The negative cells in the epithelium are infiltrating lymphocytes. Cytokeratin, Multi (4/5/6/8/10/13/18) - Clone C-11

<b>C-11</b>	NCL-L-C11	1 mL	-
-------------	-----------	------	---

### Cytokeratin, Multi (5/6/8/18)

#### TUMOR DIFFERENTIATION



Human squamous cell carcinoma of the floor of the mouth: immunohistochemical staining for cytokeratins. Cytokeratin, Multi (5/6/8/18) - Clone 5D3/LP34

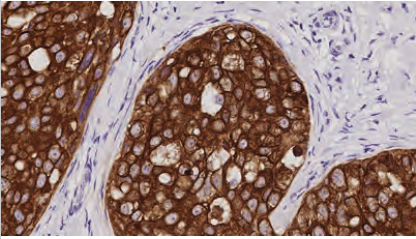
<b>5D3/LP34</b>	NCL-L-CK5/6/8/18	1 mL	-
-----------------	------------------	------	---

Products in this brochure are subject to regulatory approval. Please consult your Leica Biosystems Sales Representative for availability in your region.

IVD/CE labelled Class I antibodies are recommended for the detection of specific antigens related to the antibody in normal and neoplastic tissues, as an adjunct to conventional histopathology using non-immunologic histochemical stains.

### Cytokeratin, Multi (AE1/AE3)

**TUMOR DIFFERENTIATION**

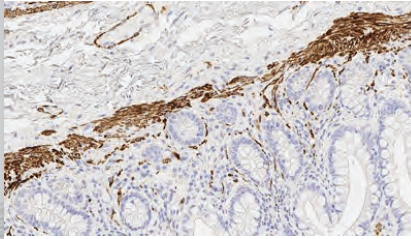


Human invasive ductal carcinoma of breast: immunohistochemical staining for AE1/AE3. Multi-Cytokeratin - Clone AE1/AE3

AE1/AE3	PA0094	7 mL	-
	NCL-L-AE1/AE3	1 mL	HD
	PA0909	7 mL	HD

### Desmin

**SOFT TISSUE PATHOLOGY**

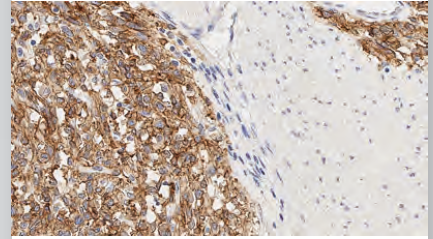


Human bowel: immunohistochemical staining for desmin. Note cytoplasmic staining of smooth muscle containing cells. Desmin - Clone DE-R-11

DE-R-11	NCL-L-DES-DER11	1 mL	HD
	PA0032	7 mL	HD

### DOG-1

**GASTROINTESTINAL PATHOLOGY**

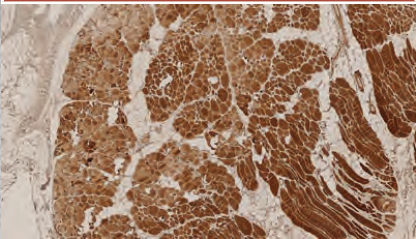


Human colon, gastrointestinal stromal tumor: immunohistochemical staining for DOG-1 - Clone K9

K9	NCL-L-DOG-1	1 mL	HD
	PA0219	7 mL	HD

### Dysferlin Antibodies

**MUSCLE PATHOLOGY**

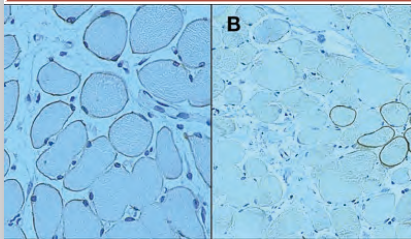


Human skeletal muscle: immunohistochemical staining of HAMLET: HAMLET - Clone Ham1/7B6

Ham1/7B6	NCL-HAMLET	1 mL	-
Ham3/17B2	NCL-HAMLET-2	1 mL	-

### Dystrophin Antibodies

**MUSCLE PATHOLOGY**

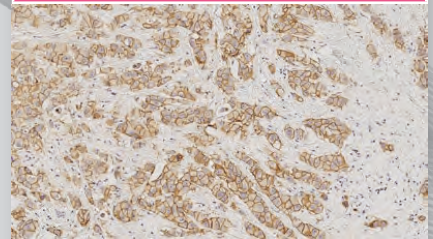


Human skeletal muscle: immunohistochemical staining for Dystrophin. Note membrane staining of normal muscle fibers (A) and reduced and variable staining of revertant muscle fibers (B). Dystrophin - Clone 13H6

13H6	NCL-DYSA	1 mL	-
34C5	NCL-DYSB	1 mL	-
Dy4/6D3	NCL-DYS1	1 mL	-
DY8/6C5	NCL-DYS2	1 mL	-
DY10/12B2	NCL-DYS3	1 mL	-

### E-Cadherin

**BREAST PATHOLOGY**

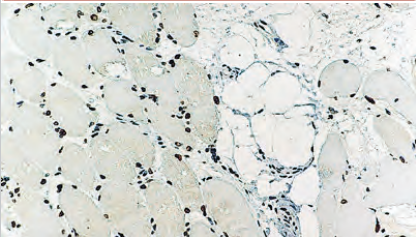


Invasive breast carcinoma: immunohistochemical staining for E-Cadherin - Clone 36B5

36B5	NCL-L-E-Cad	1 mL	HD
	PA0387	7 mL	HD

### Emerin

**MUSCLE PATHOLOGY**

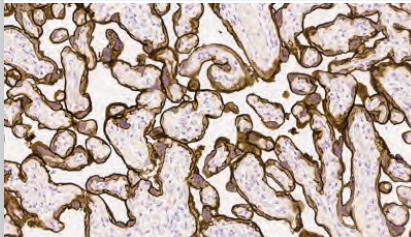


Human skeletal muscle: immunohistochemical staining for Emerin. Note perinuclear staining of all cell nuclei. Emerin - Clone 4G5

4G5	NCL-EMERIN	1 mL	-
-----	------------	------	---

### Epidermal Growth Factor Receptor

**LUNG PATHOLOGY**

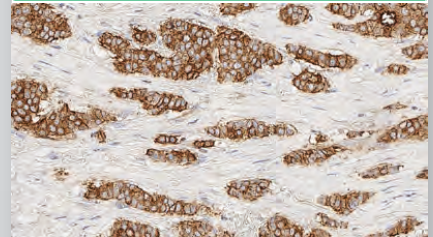


Human Placenta: immunohistochemical staining for Epidermal Growth Factor Receptor. Epidermal Growth Factor Receptor - Clone EGFR.113

EGFR.113	NCL-L-EGFR	1 mL	HD
----------	------------	------	----

### Epithelial Membrane Antigen

**TUMOR DIFFERENTIATION**



Human breast cancer: immunohistochemical staining for Epithelial Membrane Antigen - Clone GP1.4

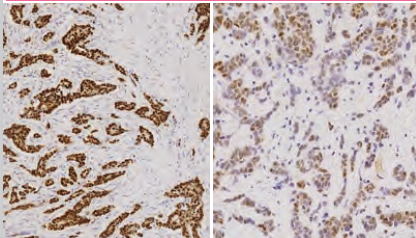
GP1.4	NCL-L-EMA	1 mL	-
	PA0035	7 mL	-

Products in this brochure are subject to regulatory approval. Please consult your Leica Biosystems Sales Representative for availability in your region.

IVD/CE labelled Class I antibodies are recommended for the detection of specific antigens related to the antibody in normal and neoplastic tissues, as an adjunct to conventional histopathology using non-immunologic histochemical stains.

### Estrogen Receptor

**BREAST PATHOLOGY**

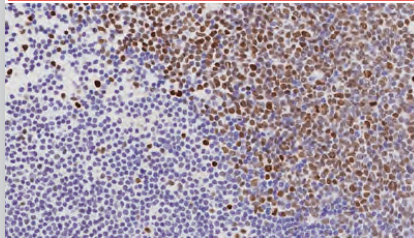


Left: Invasive ductal carcinoma (high expressor). Right: Invasive ductal carcinoma (moderate expressor): immunohistochemical staining for Estrogen Receptor - Clone 6F11

<b>6F11</b>	NCL-L-ER-6F11	1 mL	HD
	NCL-L-ER-6F11/2	2 mL	HD
	PA0151	7 mL	HD
	PA0009	30 mL	HD

### EZH2 (Enhancer of Zeste Homolog 2 (Drosophila))

**SPECIALIZED**

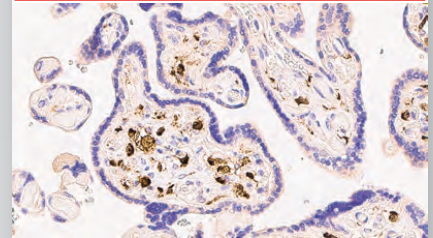


T-Cell Lymphoma: immunohistochemical staining for EZH2 antigen, EZH2 (Enhancer of Zeste Homolog 2 (Drosophila)) - Clone 6A10

<b>6A10</b>	NCL-L-EZH2	1 mL	-
	PA0575	7 mL	-

### Factor XIIIa (Blood Coagulation Factor XIIIa)

**SPECIALIZED**

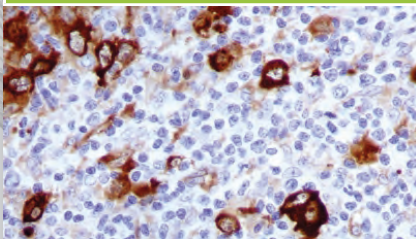


Human placenta: immunohistochemical staining of Factor XIIIa localized in the Hofbauer cells of the placental villi. Factor XIIIa (Blood Coagulation Factor XIIIa) - Clone E980.1

<b>E980.1</b>	NCL-L-FXIIIa	1 mL	-
	PA0449	7 mL	-

### Fascin

**HEMATOPATHOLOGY**

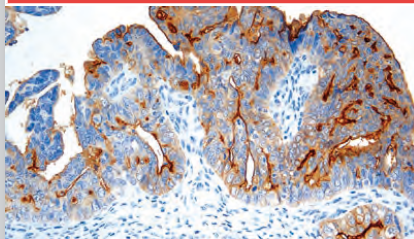


Hodgkin's lymphoma: immunohistochemical staining with Fascin - Clone IM20

<b>IM20</b>	NCL-L-FASCIN	1 mL	-
	PA0420	7 mL	-

### Folate Receptor Alpha

**SPECIALIZED**

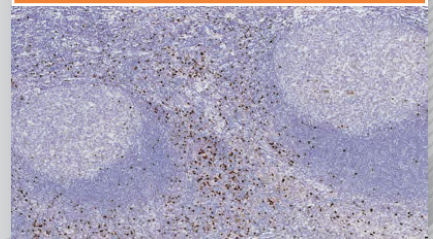


Ovarian tumor: immunohistochemical staining for Folate Receptor Alpha - Clone BN3.2

<b>BN3.2</b>	NCL-L-FRalpha	1 mL	-
--------------	---------------	------	---

### FOXP3

**IMMUNO ONCOLOGY**

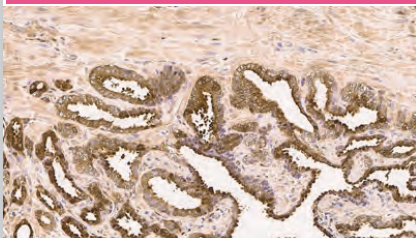


Human tonsil, immunohistochemical staining for FOXP3 - Clone 236A/E7

<b>236A/E7</b>	PA0263	7 mL	-
----------------	--------	------	---

### Galectin-3

**BREAST PATHOLOGY**

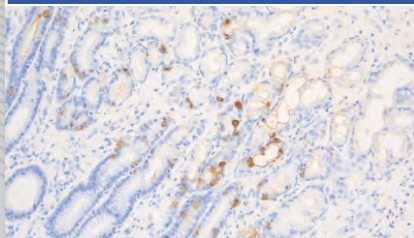


Prostate carcinoma: immunohistochemical staining of Galectin-3 - Clone 9C4

<b>9C4</b>	PA0238	7 mL	-
------------	--------	------	---

### Gastrin

**GASTROINTESTINAL PATHOLOGY**

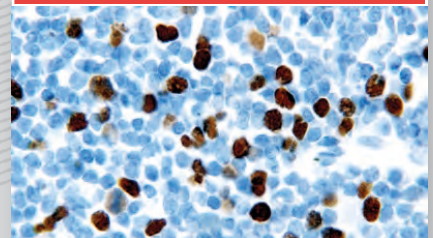


Normal human stomach: immunohistochemical staining for Gastrin. Note: intense cytoplasmic staining of neuroendocrine cells. Gastrin - Polyclonal

<b>Polyclonal</b>	PA0681	7 mL	-
-------------------	--------	------	---

### Geminin

**SPECIALIZED**



Human chronic lymphocytic leukemia: immunohistochemical staining for Geminin - Clone EM6

<b>EM6</b>	NCL-L-Geminin	1 mL	-
------------	---------------	------	---

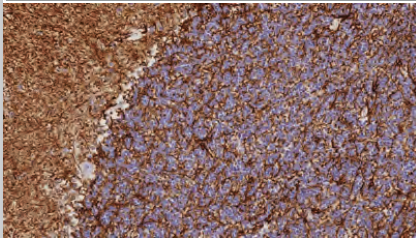
Products in this brochure are subject to regulatory approval. Please consult your Leica Biosystems Sales Representative for availability in your region.

IVD/CE labelled Class I antibodies are recommended for the detection of specific antigens related to the antibody in normal and neoplastic tissues, as an adjunct to conventional histopathology using non-immunologic histochemical stains.



### Glial Fibrillary Acidic Protein

NEUROPATHOLOGY

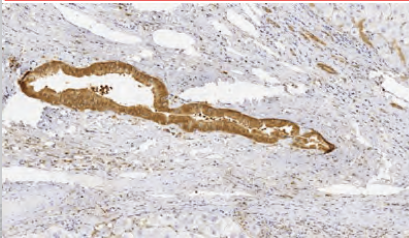


Normal brain: immunohistochemical staining for Glial Fibrillary Acidic Protein. Note the intense staining of neuronal processes. Glial Fibrillary Acidic Protein - Clone GA5

<b>GA5</b>	NCL-L-GFAP-GA5	1 mL	HD
	PA0026	7 mL	HD

### Glutathione S-Transferase (GST) Antibody

SPECIALIZED

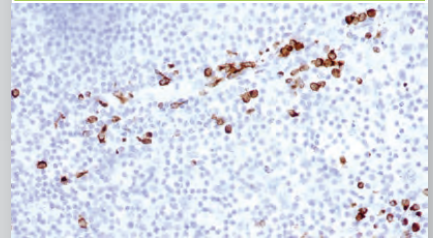


Human liver: immunohistochemical staining for GSTpi. Note staining of bile ducts. Glutathione S-transferase pi - Clone LW29

<b>LW29</b>	NCL-L-GSTpi-438	1 mL	-
-------------	-----------------	------	---

### Granzyme B

HEMATOPATHOLOGY

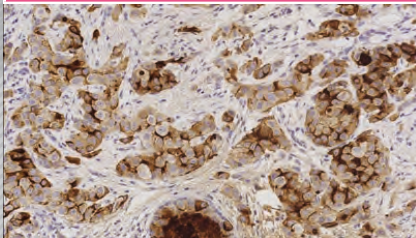


Human tonsil: immunohistochemical staining for Granzyme B - Clone 11F1

<b>11F1</b>	NCL-L-GRAN-B	1 mL	-
	PA0291	7 mL	-

### Gross Cystic Disease Fluid Protein-15

BREAST PATHOLOGY

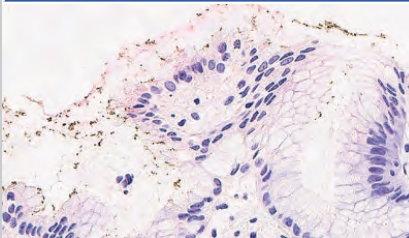


Invasive breast carcinoma: immunohistochemical staining for Gross Cystic Disease Fluid Protein-15 - Clone 23A3

<b>23A3</b>	NCL-L-GCDFP15	1 mL	HD
	PA0708	7 mL	HD

### Helicobacter pylori

GASTROINTESTINAL PATHOLOGY

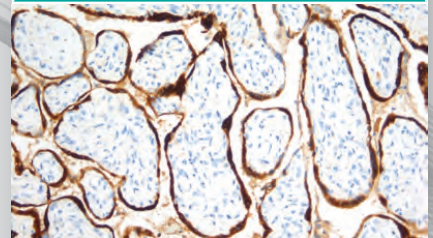


Immunohistochemical staining for Helicobacter pylori - Clone ULC3R

<b>Polyclonal</b>	IHC5994-A	7 mL	-
<b>ULC3R</b>	NCL-L-HPYLORI	1 mL	HD

### Human Chorionic Gonadotrophin (beta)

GYNEPATHOLOGY

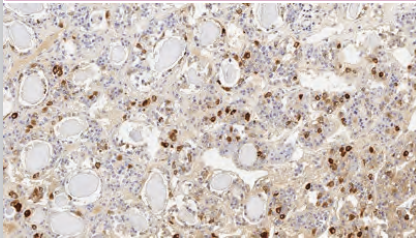


Human placenta: immunohistochemical staining with Human Chorionic Gonadotrophin (beta) - Polyclonal

<b>Polyclonal</b>	PA0014	7 mL	-
-------------------	--------	------	---

### Human Follicle Stimulating Hormone (beta 2) (hFSH)

HEAD, NECK AND ENDOCRINE

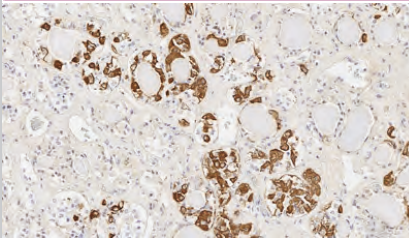


Human pituitary: immunohistochemical staining for hFSH. Note cytoplasmic staining of gonadotrophic cells. Human Follicle Stimulating Hormone (beta 2) - Clone INN-hFSH-60

<b>INN-hFSH-60</b>	PA0693	7 mL	-
--------------------	--------	------	---

### Human Growth Hormone (hGH)

HEAD, NECK AND ENDOCRINE

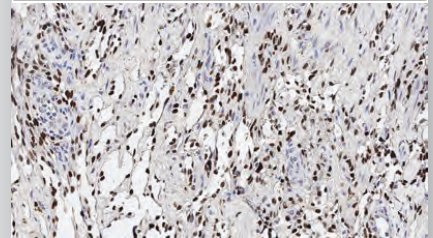


Human pituitary: immunohistochemical staining for hGH. Note cytoplasmic staining of somatotrophic cells. Human Growth Hormone - Polyclonal

<b>Polyclonal</b>	PA0704	7 mL	-
-------------------	--------	------	---

### Human Herpesvirus 8 (HHV8)

DERMATOPATHOLOGY



Human skin, Kaposi's sarcoma: immunohistochemical staining for HHV8. Human Herpesvirus 8 - Clone 13B10

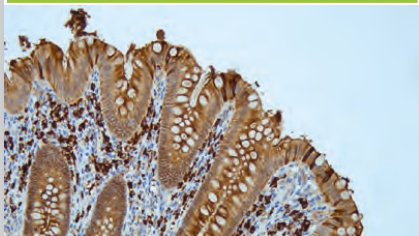
<b>13B10</b>	NCL-L-HHV8-LNA	1 mL	-
	PA0050	7 mL	-

Products in this brochure are subject to regulatory approval. Please consult your Leica Biosystems Sales Representative for availability in your region.

IVD/CE labelled Class I antibodies are recommended for the detection of specific antigens related to the antibody in normal and neoplastic tissues, as an adjunct to conventional histopathology using non-immunologic histochemical stains.

### Immunoglobulin A

HEMATOPATHOLOGY

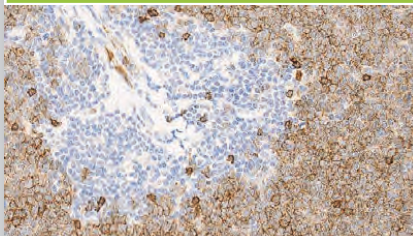


Human appendix: immunohistochemical staining for Immunoglobulin A. Note the intense staining of plasma cells and secreted Immunoglobulin A - Clone N1CLA

<b>N1CLA</b>	NCL-L-IgA	1 mL	HD
--------------	-----------	------	----

### Immunoglobulin D

HEMATOPATHOLOGY

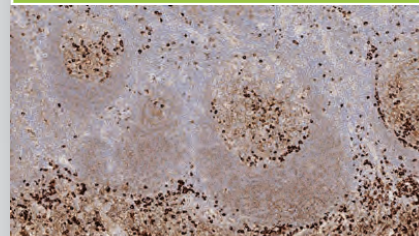


Mantle cell lymphoma: immunohistochemical staining for Immunoglobulin D - Clone DRN1C

<b>DRN1C</b>	NCL-L-IgD	1 mL	HD
	PA0061	7 mL	HD

### Immunoglobulin G

HEMATOPATHOLOGY

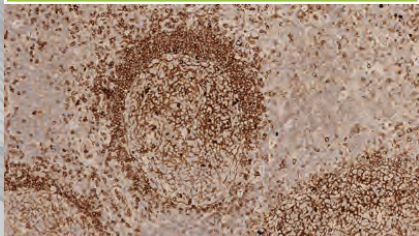


Human tonsil: immunohistochemical staining for Immunoglobulin G. Note intense staining of plasma cells, weaker staining of follicular dendritic cell network and some B cells. Immunoglobulin G - Clone RWP49

<b>RWP49</b>	NCL-L-IgG	1 mL	HD
	PA0905	7 mL	HD

### Immunoglobulin M

HEMATOPATHOLOGY

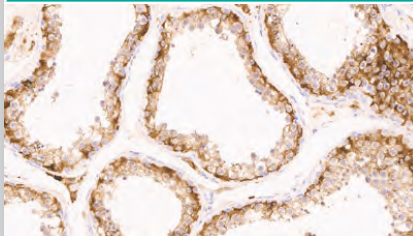


Human tonsil: immunohistochemical staining for Immunoglobulin M. Note intense staining of plasma cells, weaker staining of follicular dendritic cell network and some B cells. Immunoglobulin M - Clone 8H6

<b>8H6</b>	NCL-L-IgM	1 mL	HD
	PA0278	7 mL	HD

### Inhibin Alpha

GYNEPATHOLOGY

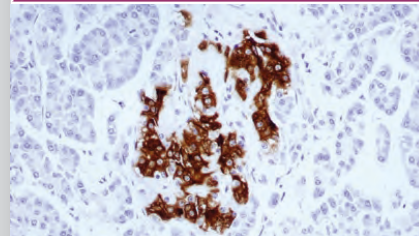


Human testis: immunohistochemical staining for inhibin alpha showing cytoplasmic staining of Sertoli cells. Inhibin Alpha - Clone R1

<b>R1</b>	PA0488	7 mL	-
<b>AMY82</b>	NCL-L-InhibinA	1 mL	-

### Insulin

HEAD, NECK AND ENDOCRINE

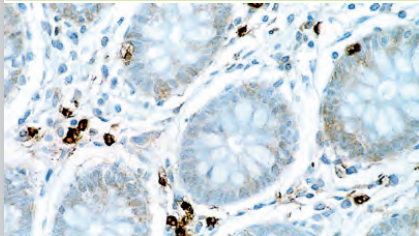


Human pancreas: immunohistochemical staining for insulin-containing cells. Note intense cytoplasmic staining. Insulin - Clone 2D11-H5

<b>2D11-H5</b>	NCL-L-INSULIN	1 mL	-
	PA0620	7 mL	-

### Interleukin 6

HEMATOPATHOLOGY

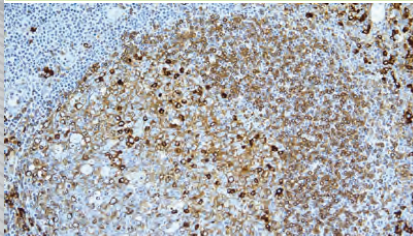


Human colon: immunohistochemical staining for Interleukin 6. Note cytoplasmic staining of a proportion of lymphoid cells. Interleukin 6 - Clone 10C12

<b>10C12</b>	NCL-L-IL6	1 mL	-
--------------	-----------	------	---

### Kappa Light Chain

HEMATOPATHOLOGY

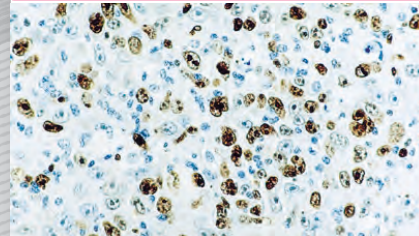


Human tonsil: immunohistochemical staining with Kappa Light Chain - Clone CH15

<b>CH15</b>	NCL-L-KAP-581	1 mL	HD
	PA0606	7 mL	HD

### Ki67 Antigen

BREAST PATHOLOGY



Diffuse large B cell lymphoma: immunohistochemical staining for Ki67 - Clone MM1

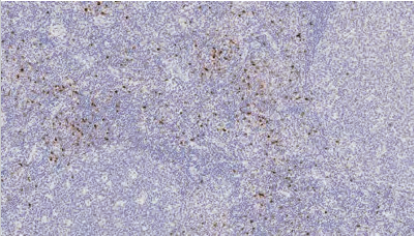
<b>MM1</b>	NCL-L-Ki67-MM1	1 mL	HD
	PA0118	7 mL	HD
	PA0410	30 mL	HD
<b>K2</b>	ACK02	1 mL	-
	PA0230	7 mL	-

Products in this brochure are subject to regulatory approval. Please consult your Leica Biosystems Sales Representative for availability in your region.

IVD/CE labelled Class I antibodies are recommended for the detection of specific antigens related to the antibody in normal and neoplastic tissues, as an adjunct to conventional histopathology using non-immunologic histochemical stains.

**LAG-3**

**IMMUNO ONCOLOGY**

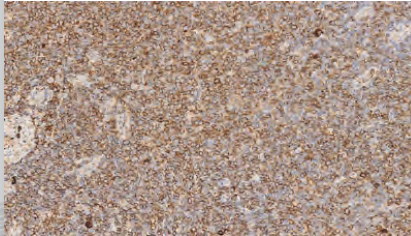


Human tonsil, immunohistochemical staining for LAG-3 - Clone 12H6

<b>12H6</b>	<b>PA0300</b>	<b>7 mL</b>	<b>-</b>
-------------	---------------	-------------	----------

**Lambda Light Chain**

**HEMATOPATHOLOGY**

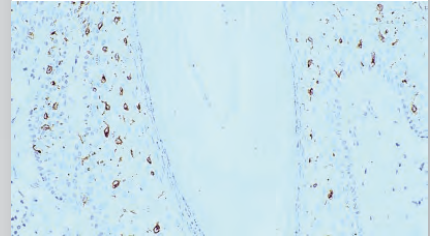


B cell chronic lymphocytic leukemia: immunohistochemical staining for Lambda Light Chain - Clone SHL53

<b>SHL53</b>	<b>NCL-L-LAM-578</b>	<b>1 mL</b>	<b>HD</b>
	<b>PA0570</b>	<b>7 mL</b>	<b>HD</b>

**Langerin**

**SPECIALIZED**

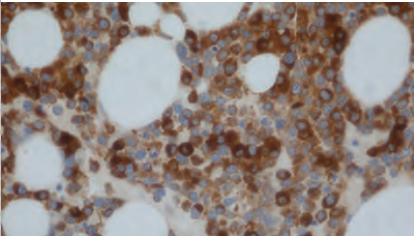


Human skin: immunohistochemical staining for langerin. Langerin - Clone 12D6

<b>12D6</b>	<b>NCL-L-LANGERIN</b>	<b>1 mL</b>	<b>-</b>
-------------	-----------------------	-------------	----------

**Lysozyme (Muramidase)**

**HEMATOPATHOLOGY**

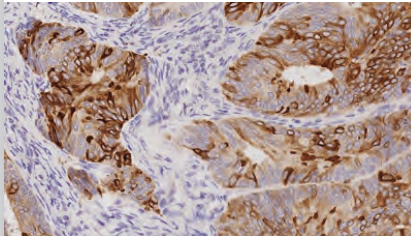


Bone marrow: immunohistochemical staining of myeloid cells using Lysozyme - Polyclonal

<b>Polyclonal</b>	<b>PA0391</b>	<b>7 mL</b>	<b>-</b>
-------------------	---------------	-------------	----------

**Mammaglobin**

**BREAST PATHOLOGY**

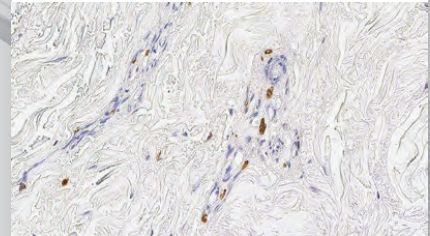


Human ductal carcinoma of breast: immunohistochemical staining for Mammaglobin protein - Clone EP249

<b>EP249</b>	<b>PA0378</b>	<b>7 mL</b>	<b>-</b>
--------------	---------------	-------------	----------

**Mast Cell Tryptase**

**HEMATOPATHOLOGY**

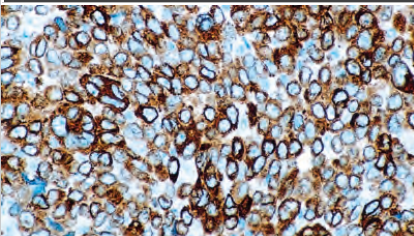


Human skin: immunohistochemical staining for Mast Cell Tryptase. Note cytoplasmic staining of mast cells. Mast Cell Tryptase - Clone 10D11

<b>10D11</b>	<b>NCL-L-MCTryp-428</b>	<b>1 mL</b>	<b>-</b>
	<b>PA0019</b>	<b>7 mL</b>	<b>-</b>

**Melan A**

**DERMATOPATHOLOGY**

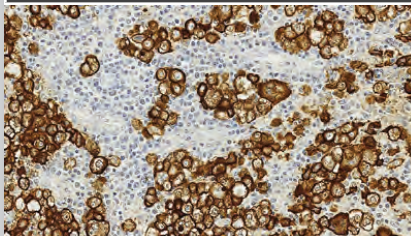


Human skin, melanoma: immunohistochemical staining for Melan A - Clone A103

<b>A103</b>	<b>NCL-L-MELANA</b>	<b>1 mL</b>	<b>HD</b>
	<b>PA0233</b>	<b>7 mL</b>	<b>HD</b>
	<b>PA0044</b>	<b>30 mL</b>	<b>HD</b>

**Melanoma Marker (HMB45)**

**DERMATOPATHOLOGY**

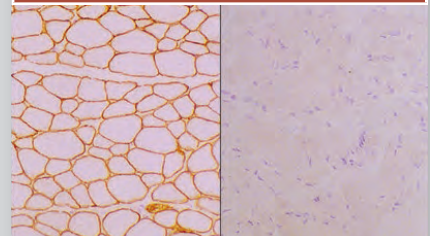


Human skin, melanoma: immunohistochemical staining for HMB45. Melanoma Marker (HMB45) - Clone HMB45

<b>HMB45</b>	<b>NCL-L-HMB45</b>	<b>1 mL</b>	<b>HD</b>
	<b>PA0027</b>	<b>7 mL</b>	<b>HD</b>
	<b>PA0625</b>	<b>30 mL</b>	<b>HD</b>

**Merosin Laminin Alpha 2 Chain**

**MUSCLE PATHOLOGY**



Human skeletal muscle: immunohistochemical staining for Merosin. Note membrane staining of normal muscle fibers (A) and absence of staining of muscle fibers (B). Frozen sections. Photographs supplied courtesy of Dr Louise V B Anderson. Merosin Laminin Alpha 2 Chain - Clone Mer3/22B2

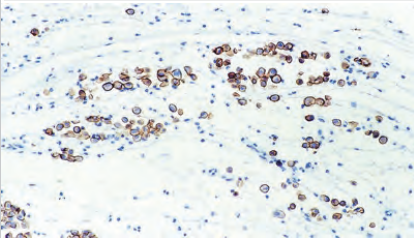
<b>Mer3/22B2</b>	<b>NCL-MEROSIN</b>	<b>1 mL</b>	<b>-</b>
------------------	--------------------	-------------	----------

Products in this brochure are subject to regulatory approval. Please consult your Leica Biosystems Sales Representative for availability in your region.

IVD/CE labelled Class I antibodies are recommended for the detection of specific antigens related to the antibody in normal and neoplastic tissues, as an adjunct to conventional histopathology using non-immunologic histochemical stains.

### Mesothelin

#### LUNG PATHOLOGY

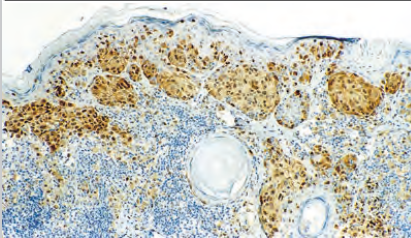


Human mesothelioma: immunohistochemical staining for Mesothelin - Clone 5B2

<b>5B2</b>	NCL-L-MESO	1 mL	-
	PA0373	7 mL	-

### Microphthalmia Transcription Factor (MITF)

#### DERMATOPATHOLOGY

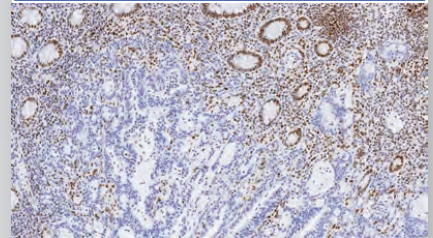


Human malignant melanoma: immunohistochemical staining for Microphthalmia Transcription Factor - Clone 34CA5

<b>34CA5</b>	NCL-L-MITF	1 mL	-
--------------	------------	------	---

### Mismatch Repair Protein (MLH1)

#### GASTROINTESTINAL PATHOLOGY

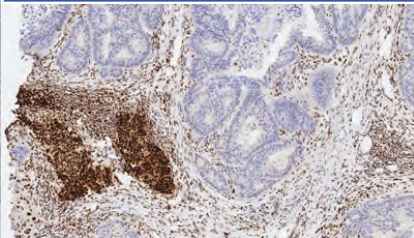


Human squamous cell carcinoma: immunohistochemical staining for Mismatch Repair Protein (MLH1) - Clone ES05

<b>ES05</b>	NCL-L-MLH1	1 mL	HD
	PA0988	7 mL	HD

### Mismatch Repair Protein (MSH2)

#### GASTROINTESTINAL PATHOLOGY

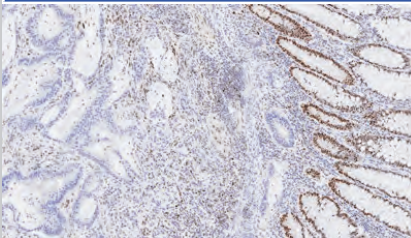


Human tonsil: immunohistochemical staining for MSH2. Note the nuclear staining for Mismatch Repair Protein (MSH2) - Clone 25D12

<b>79H11</b>	NCL-L-MSH2-612	1 mL	HD
	PA0989	7 mL	HD
<b>25D12</b>	NCL-L-MSH2	1 mL	HD

### Mismatch Repair Protein (MSH6)

#### GASTROINTESTINAL PATHOLOGY

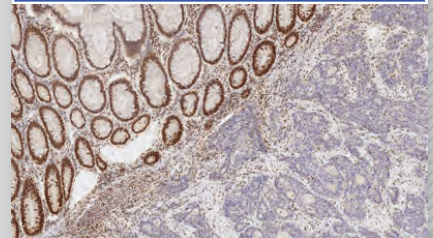


Human bowel: immunohistochemical staining for Mismatch Repair Protein (MSH6) - Clone PU29

<b>EP49</b>	PA0990	7 mL	HD
<b>PU29</b>	NCL-L-MSH6	1 mL	HD

### Mismatch Repair Protein (PMS2)

#### GASTROINTESTINAL PATHOLOGY



Human colonic carcinoma: immunohistochemical staining for Mismatch Repair Protein (PMS2) - Clone M0R4G

<b>EP51</b>	PA0991	7 mL	HD
<b>M0R4G</b>	NCL-L-PMS2	1 mL	HD

### Muc-1 Glycoprotein

#### GASTROINTESTINAL PATHOLOGY

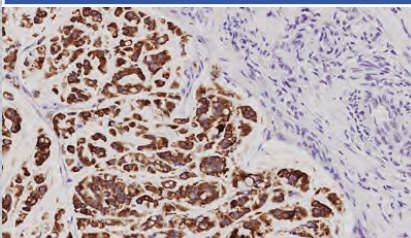


Human endometrium: immunohistochemical staining for Muc-1 Glycoprotein - Clone Ma695

<b>Ma695</b>	PA0051	7 mL	-
--------------	--------	------	---

### Muc-2 Glycoprotein

#### GASTROINTESTINAL PATHOLOGY

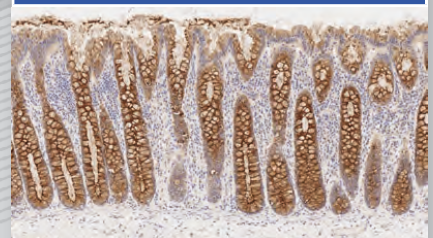


Human colon: immunohistochemical staining for Muc-2 Glycoprotein - Clone Ccp58

<b>Ccp58</b>	PA0155	7 mL	-
--------------	--------	------	---

### Muc-4 Glycoprotein

#### GASTROINTESTINAL PATHOLOGY



Human colon: immunohistochemical staining for MUC-4. Muc-4 Glycoprotein - Clone EPR9308

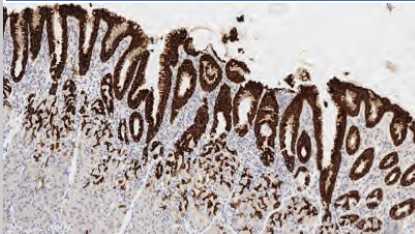
<b>EPR9308</b>	PA0444	7 mL	-
----------------	--------	------	---

Products in this brochure are subject to regulatory approval. Please consult your Leica Biosystems Sales Representative for availability in your region.

IVD/CE labelled Class I antibodies are recommended for the detection of specific antigens related to the antibody in normal and neoplastic tissues, as an adjunct to conventional histopathology using non-immunologic histochemical stains.

### Muc-5AC Glycoprotein

**GASTROINTESTINAL PATHOLOGY**

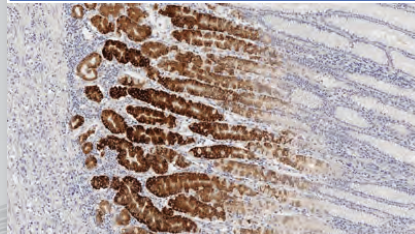


Human stomach: immunohistochemical staining for Muc-5AC. Note luminal and cytoplasmic staining of surface gastric epithelial cells. Muc-5AC Glycoprotein - Clone CLH2

<b>CLH2</b>	PA0052	7 mL	-
-------------	--------	------	---

### Muc-6 Glycoprotein

**GASTROINTESTINAL PATHOLOGY**

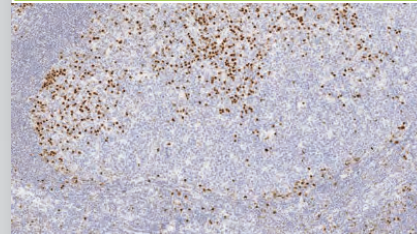


Human stomach: immunohistochemical staining for Muc-6. Note cytoplasmic staining of deeper gastric epithelial cells. Muc-6 Glycoprotein - Clone CLH5

<b>CLH5</b>	PA0053	7 mL	-
-------------	--------	------	---

### Multiple Myeloma Oncogene 1 (MUM-1)

**HEMATOPATHOLOGY**

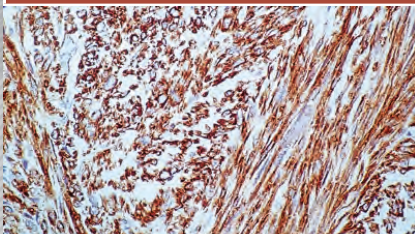


Human tonsil: immunohistochemical staining for MUM-1. Note nuclear staining of B cells showing lymphoplasmacytic differentiation. Multiple Myeloma Oncogene 1 - Clone EAU32

<b>EAU32</b>	NCL-L-MUM1	1 mL	HD
<b>EAU32</b>	PA0129	7 mL	HD

### Muscle Pathology Specific Actin

**MUSCLE PATHOLOGY**

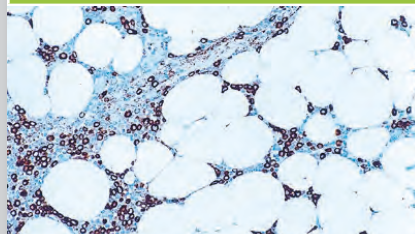


Human leiomyosarcoma: immunohistochemical staining for Muscle Specific Actin. Muscle Specific Actin - Clone HHF35

<b>HHF35</b>	NCL-L-MSA	1 mL	-
	PA0258	7 mL	-
<b>SC28</b>	NCL-L-MSA-594	1 mL	-

### Myeloperoxidase

**HEMATOPATHOLOGY**

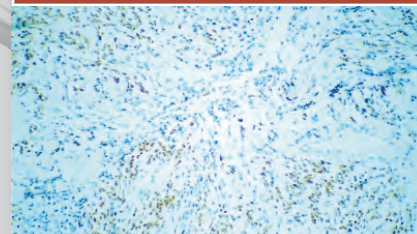


Human bone marrow, granulocytic sarcoma: immunohistochemical staining for Myeloperoxidase - Clone 59A5

<b>59A5</b>	NCL-L-MYELO	1 mL	-
	PA0491	7 mL	-

### MyoD1 (Rhabdomyosarcoma)

**MUSCLE PATHOLOGY**

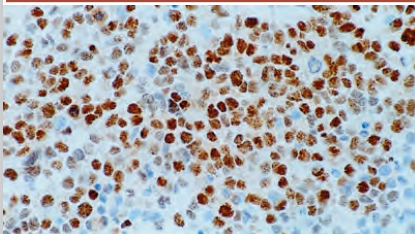


Human rhabdomyosarcoma: immunohistochemical staining for MyoD1 protein - Clone 5.8A

<b>5.8A</b>	NCL-L-MyoD1	1 mL	-
-------------	-------------	------	---

### Myogenin (Myf-4)

**MUSCLE PATHOLOGY**

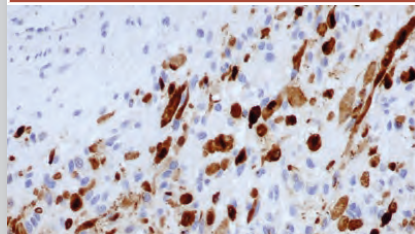


Human rhabdomyosarcoma: immunohistochemical staining for Myogenin (Myf-4) protein - Clone LO26

<b>LO26</b>	NCL-L-Myf-4	1 mL	-
	PA0226	7 mL	-

### Myoglobin

**MUSCLE PATHOLOGY**

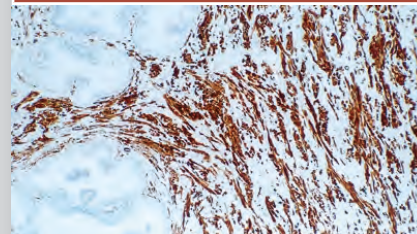


Human rhabdomyosarcoma: immunohistochemical staining for Myoglobin - Clone MYO18

<b>MYO18</b>	PA0727	7 mL	-
--------------	--------	------	---

### Myosin Heavy Chain Antibodies

**MUSCLE PATHOLOGY**



Human prostate: immunohistochemical staining for myosin heavy chain. Note intense staining of muscle fibers. Myosin Heavy Chain (smooth muscle) - Clone S131

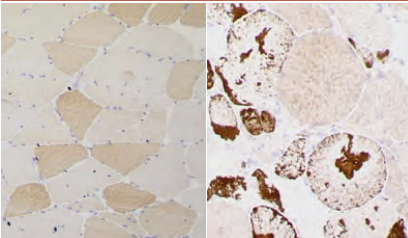
<b>S131</b>	PA0493	7 mL	-
<b>RNMy2/9D2</b>	NCL-MHCd	1 mL	-
<b>WB-MHCf</b>	NCL-MHCf	1 mL	-
<b>WB-MHCN</b>	NCL-MHCn	1 mL	-
<b>WB-MHCS</b>	NCL-MHCs	1 mL	-

Products in this brochure are subject to regulatory approval. Please consult your Leica Biosystems Sales Representative for availability in your region.

IVD/CE labelled Class I antibodies are recommended for the detection of specific antigens related to the antibody in normal and neoplastic tissues, as an adjunct to conventional histopathology using non-immunologic histochemical stains.

### Myotilin

#### MUSCLE PATHOLOGY

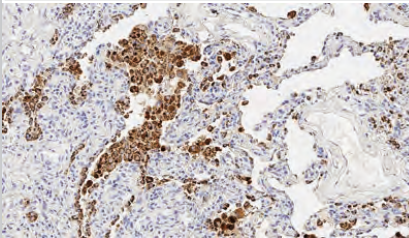


Human skeletal muscle: immunohistochemical staining for Myotilin. Note sarcoplasmic staining of normal muscle fibers (A) and presence of protein aggregates (B). Myotilin - Clone RS034

<b>RS034</b>	<b>NCL-MYOTILIN</b>	1 mL	-
--------------	---------------------	------	---

### Napsin A

#### LUNG PATHOLOGY

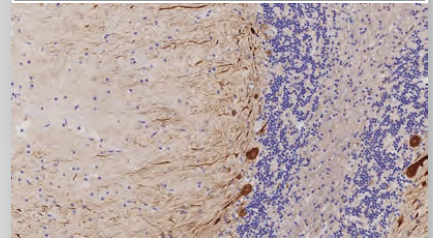


Human lung: immunohistochemical staining for Napsin A. Note cytoplasmic staining of pneumocytes and alveolar macrophages. Napsin A - Clone IP64

<b>IP64</b>	<b>NCL-L-NAPSINA</b>	1 mL	HD
	<b>PA0064</b>	7 mL	HD

### Neurofilament 200kD

#### NEUROPATHOLOGY

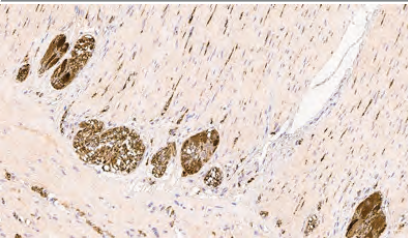


Human cerebellum: immunohistochemical staining for Neurofilament 200kD. Note cytoplasmic staining of neurons and their axons. Neurofilament 200kD - Clone N52.1.7

<b>N52.1.7</b>	<b>NCL-L-NF200-N52</b>	1 mL	HD
	<b>PA0371</b>	7 mL	HD

### Neuron Specific Enolase

#### NEUROPATHOLOGY

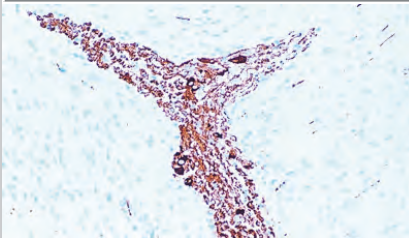


Human large bowel: immunohistochemical staining of Neuron Specific Enolase (NSE). Note the staining in the neuronal elements and the ganglia of the longitudinal and circular smooth muscle. Neuron Specific Enolase - Clone 22C9

<b>22C9</b>	<b>PA0435</b>	7 mL	-
-------------	---------------	------	---

### Nitric Oxide Synthase 1

#### NEUROPATHOLOGY

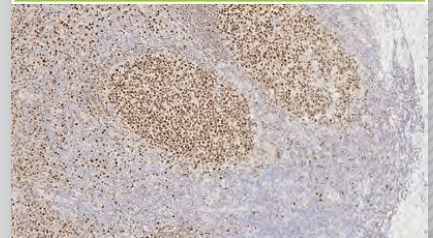


Human small intestine: immunohistochemical staining for nitric oxide synthase 1. Note cytoplasmic staining of enteric ganglia. Nitric Oxide Synthase 1 - Clone NOS-125

<b>NOS-125</b>	<b>NCL-L-NOS-1</b>	1 mL	-
----------------	--------------------	------	---

### Oct-02

#### HEMATOPATHOLOGY

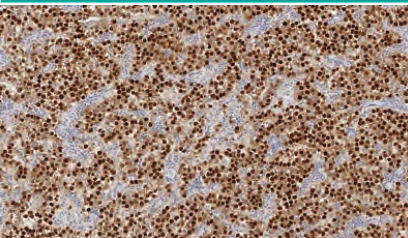


Human tonsil: immunohistochemical staining for Oct-2. Note strong staining of germinal centre B-cells. Oct-2 - Clone Oct-207

<b>Oct-207</b>	<b>PA0532</b>	7 mL	-
----------------	---------------	------	---

### Oct-3/4

#### GYNEPATHOLOGY

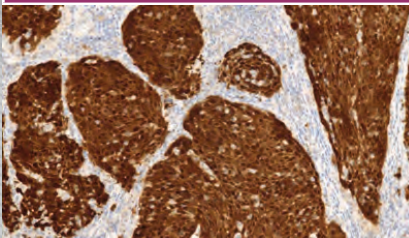


Human testes, seminoma: immunohistochemical staining for Oct-3/4 - Clone N1NK

<b>N1NK</b>	<b>NCL-L-Oct3/4</b>	1 mL	HD
	<b>PA0193</b>	7 mL	HD
	<b>PA0934</b>	7 mL	HD

### p16

#### HEAD, NECK AND ENDOCRINE

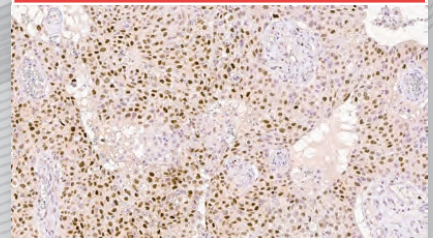


Squamous Cell Carcinoma of tonsil: immunohistochemical staining for p16. p16 - clone 6H12

<b>6H12</b>	<b>PA0016</b>	7 mL	HD
-------------	---------------	------	----

### p21 (WAF1 Protein)

#### SPECIALIZED



Squamous cell carcinoma: immunohistochemical staining of p21(WAF1) - Clone 4D10

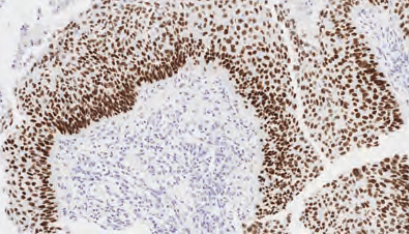
<b>4D10</b>	<b>NCL-L-WAF-1</b>	1 mL	-
-------------	--------------------	------	---

Products in this brochure are subject to regulatory approval. Please consult your Leica Biosystems Sales Representative for availability in your region.

IVD/CE labelled Class I antibodies are recommended for the detection of specific antigens related to the antibody in normal and neoplastic tissues, as an adjunct to conventional histopathology using non-immunologic histochemical stains.

### p40

**LUNG PATHOLOGY**

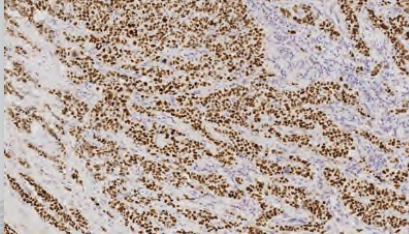


Squamous cell carcinoma of lung, immunohistochemical staining for p40 BOND Ready-to-use Primary Antibody, PA0163. p40 - Clone BC28

<b>BC28</b>	PA0163	7 mL	HD
-------------	--------	------	----

### p53 Protein

**BREAST PATHOLOGY**

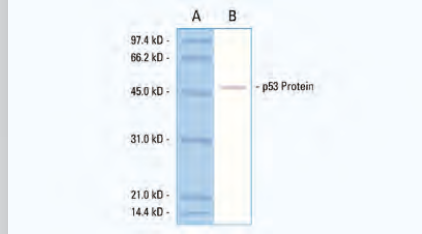


Human ductal carcinoma of the breast: immunohistochemical staining of p53 Protein - Clone DO-7

<b>DO-7</b>	NCL-L-p53-DO7	1 mL	HD
	PA0057	7 mL	HD

### p53 Protein (CM5)

**SPECIALIZED**

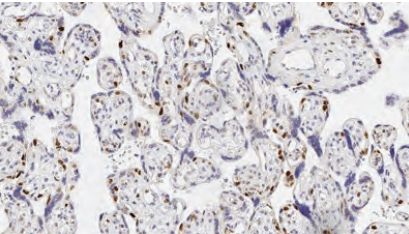


Western blot: detection of p53 protein (53 kD). Lane A, molecular weight markers. Lane B, T3T3 mouse cell line immunoblotted, p53 Protein (CM5) - Polyclonal

<b>Polyclonal</b>	NCL-L-p53-CM5p	0.5 mL	-
-------------------	----------------	--------	---

### p57 Protein (Kip2)

**SPECIALIZED**

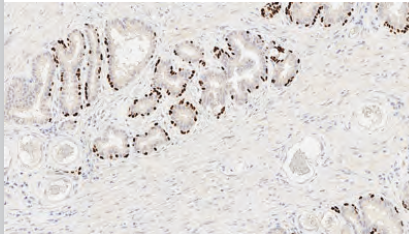


Human placenta: immunohistochemical staining for p57 protein. Note nuclear staining for cytotrophoblast and stromal cells of the villi. p57 - Clone 25B2

<b>25B2</b>	NCL-L-p57	1 mL	-
-------------	-----------	------	---

### p63 Protein

**UROPATHOLOGY**

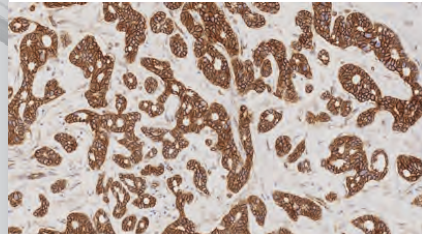


Human prostate: immunohistochemical staining for p63. Note nuclear staining of basal cells of prostatic glands. p63 - Clone 7JUL

<b>7JUL</b>	NCL-L-p63	1 mL	HD
	PA0103	7 mL	HD

### p120 Catenin

**BREAST PATHOLOGY**

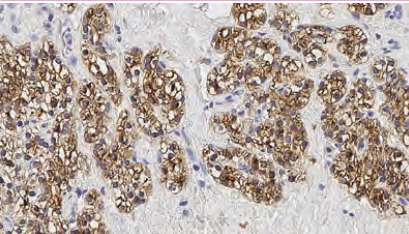


Human breast carcinoma: immunohistochemical staining for p120 Catenin antigen - Clone EP66

<b>EP66</b>	PA0379	7 mL	-
-------------	--------	------	---

### Parathyroid Hormone (PTH)

**HEAD, NECK AND ENDOCRINE**

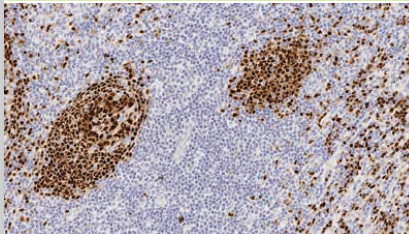


Human parathyroid adenoma: immunohistochemical staining for Parathyroid Hormone - Clone 105G7

<b>105G7</b>	NCL-L-PTH-488	1 mL	-
--------------	---------------	------	---

### Pax-5

**HEMATOPATHOLOGY**

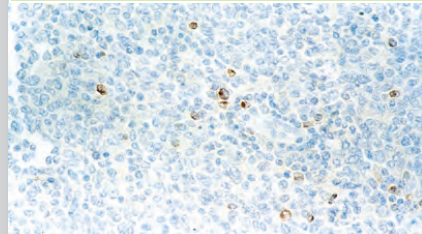


Human tonsil: immunohistochemical staining for Pax-5. Note nuclear staining of B cells. Pax-5 - Clone 1EW

<b>1EW</b>	NCL-L-PAX-5	1 mL	HD
	PA0552	7 mL	HD

### Perforin

**HEMATOPATHOLOGY**



Human follicular lymphoma: immunohistochemical staining for Perforin - Clone 5B10

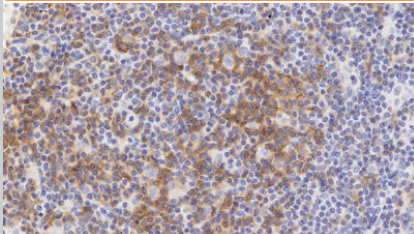
<b>5B10</b>	NCL-L-PERFORIN	1 mL	-
-------------	----------------	------	---

Products in this brochure are subject to regulatory approval. Please consult your Leica Biosystems Sales Representative for availability in your region.

IVD/CE labelled Class I antibodies are recommended for the detection of specific antigens related to the antibody in normal and neoplastic tissues, as an adjunct to conventional histopathology using non-immunologic histochemical stains.

**PD-1**

**IMMUNO ONCOLOGY**

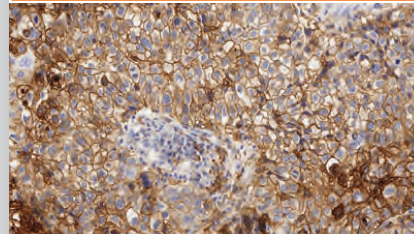


Hodgkin lymphoma, immunohistochemical staining for PD-1 - Clone CAL20

<b>CAL20</b>	PA0216	7 mL	-
--------------	--------	------	---

**PD-L1**

**IMMUNO ONCOLOGY**

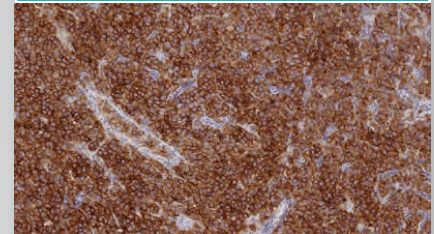


Human non-small cell lung cancer: immunohistochemical staining with PD-L1 BOND Ready-to-Use Primary Antibody PA0832, PD-L1 - Clone 73-10

<b>73-10</b>	PA0832	7 mL	HD
--------------	--------	------	----

**Placental Alkaline Phosphatase**

**GYNEPATHOLOGY**

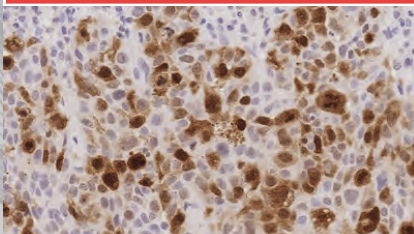


Human seminoma: immunohistochemical staining of Placental Alkaline Phosphatase (PLAP) - Clone 8A9

<b>8A9</b>	NCL-L-PLAP-8A9	1 mL	HD
	PA0161	7 mL	HD

**Polo-Like Kinase 1 (PLK-1)**

**SPECIALIZED**

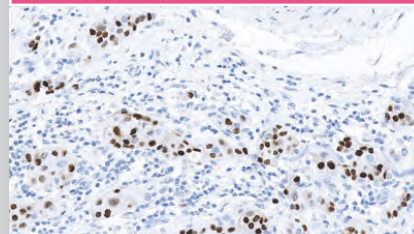


Squamous cell carcinoma of oropharyngeal tissue: immunohistochemical staining of Polo-Like Kinase-1 (PLK-1) - Clone MJS1

<b>MJS1</b>	NCL-L-PLK-1	1 mL	-
-------------	-------------	------	---

**Progesterone Receptor**

**BREAST PATHOLOGY**

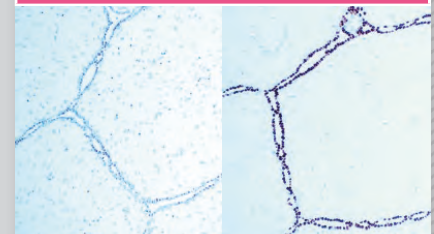


Breast carcinoma: immunohistochemical staining of Progesterone Receptor - Clone 16

<b>16</b>	NCL-L-PGR-312	1 mL	HD
	NCL-L-PGR-312/2	2 mL	HD
	PA0312	7 mL	HD
	PA0436	30 mL	HD
<b>1A6</b>	NCL-L-PGR	1 mL	-

**Progesterone Receptor (A/B Forms)**

**BREAST PATHOLOGY**

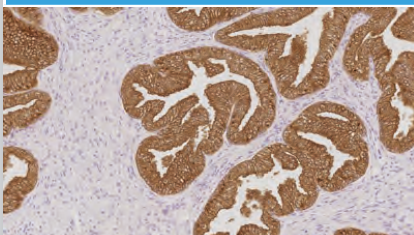


Human fibroadenoma (serial sections): immunohistochemical staining for Progesterone Receptor (A and B forms) - Clones 16/SAN27

<b>16/SAN27</b>	NCL-L-PGR-AB	1 mL	-
-----------------	--------------	------	---

**Prostate Specific Antigen**

**UROPATHOLOGY**

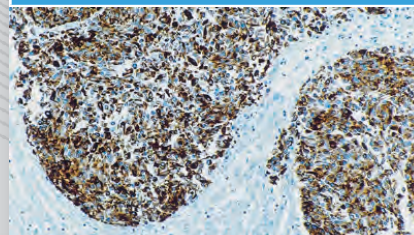


Human prostatic hyperplasia: immunohistochemical staining of Prostate Specific Antigen - Clone 35H9

<b>35H9</b>	NCL-L-PSA-431	1 mL	HD
	PA0431	7 mL	HD

**Prostate Specific Membrane Antigen**

**UROPATHOLOGY**

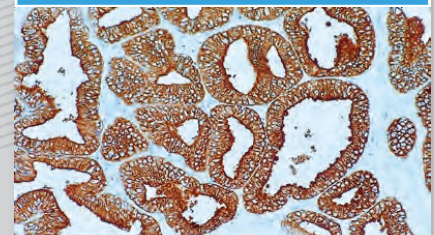


Human prostate: immunohistochemical staining for Prostate Specific Membrane Antigen (PSMA) - Clone 1D6

<b>1D6</b>	NCL-L-PSMA	1 mL	-
------------	------------	------	---

**Prostatic Acid Phosphatase**

**UROPATHOLOGY**



Human prostate, adenocarcinoma: immunohistochemical staining for prostatic acid phosphatase. Note cytoplasmic staining of tumor cells. Prostatic Acid Phosphatase - Clone PASE/4LJ

<b>PASE/4LJ</b>	NCL-L-PAP	1 mL	-
	PA0006	7 mL	-

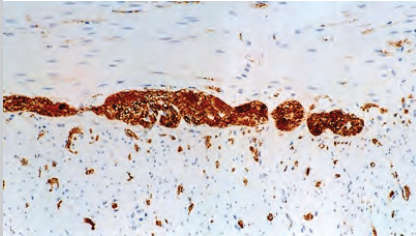
Products in this brochure are subject to regulatory approval. Please consult your Leica Biosystems Sales Representative for availability in your region.

IVD/CE labelled Class I antibodies are recommended for the detection of specific antigens related to the antibody in normal and neoplastic tissues, as an adjunct to conventional histopathology using non-immunologic histochemical stains.



### Protein Gene Product 9.5

#### NEUROPATHOLOGY

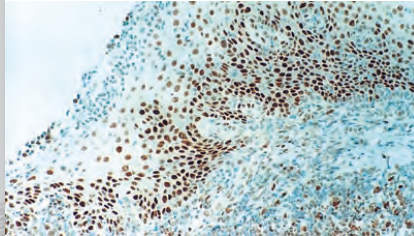


Human colon: immunohistochemical staining of Protein Gene Product 9.5. Note the staining in the neuronal elements and the ganglia of the longitudinal and circular smooth muscle. Protein Gene Product 9.5 - Clone 10A1

<b>10A1</b>	NCL-L-PGP9.5	1 mL	-
	PA0286	7 mL	-

### Retinoblastoma Gene Protein

#### SPECIALIZED

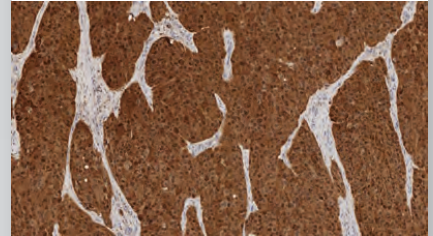


Human tonsil: immunohistochemical staining for Retinoblastoma Gene Protein - Clone 13A10

<b>13A10</b>	NCL-L-RB-358	1 mL	-
--------------	--------------	------	---

### S-100

#### DERMATOPATHOLOGY

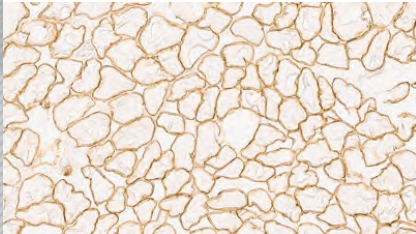


Human malignant melanoma: immunohistochemical staining for S-100B protein - Clone EP32

<b>EP32</b>	NCL-L-S100-167	1 mL	HD
	PA0031	7 mL	HD

### Sarcoglycan Antibodies

#### MUSCLE PATHOLOGY

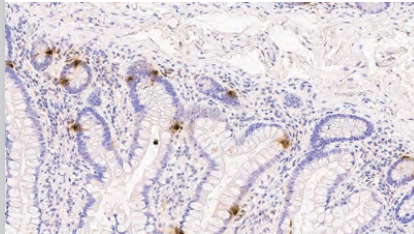


Transverse section of skeletal muscle fibers. immunohistochemical staining for Alpha Sarcoglycan. Note the demonstration of localized Alpha Sarcoglycan to the sarcolemma of the muscle fibers. Alpha Sarcoglycan - Clone Ad1/20A6

<b>Ad1/20A6</b>	NCL-L-a-SARC	1 mL	-
<b>βSarc1/5B1</b>	NCL-L-b-SARC	1 mL	-
<b>δSarc3/12C1</b>	NCL-d-SARC	1 mL	-
<b>35DAG/21B5</b>	NCL-g-SARC	1 mL	-

### Serotonin

#### GASTROINTESTINAL PATHOLOGY

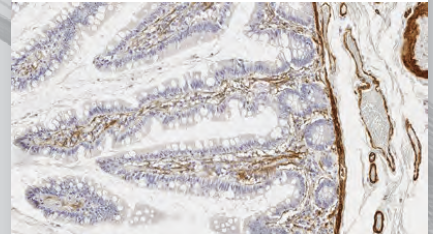


Human bowel: immunohistochemical staining for Serotonin-containing mucosal cells. Serotonin - Polyclonal

<b>Polyclonal</b>	PA0736	7 mL	-
-------------------	--------	------	---

### SMA (Alpha Smooth Muscle Pathology Actin)

#### MUSCLE PATHOLOGY



Human small bowel: immunohistochemical staining for Alpha Smooth Muscle Actin. Note cytoplasmic staining of the muscularis mucosa, vascular walls and smooth muscle fibers in the lamina propria. SMA: clone- $\alpha$ 1-sm-1

<b>asm-1</b>	NCL-L-SMA	1 mL	HD
	PA0943	7 mL	HD

### Spectrin

#### MUSCLE PATHOLOGY

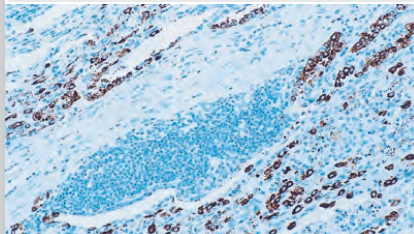


Human striated muscle: immunohistochemical staining for Spectrin. Note membrane staining of muscle fibers. Spectrin - Clone RBC2/3D5

<b>RBC2/3D5</b>	NCL-SPEC1	1 mL	-
-----------------	-----------	------	---

### Surfactant Protein A

#### LUNG PATHOLOGY

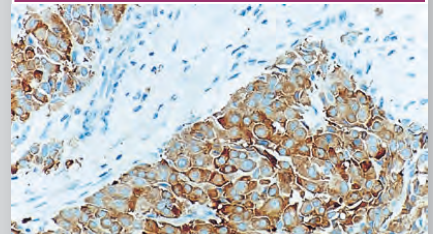


Human lung adenocarcinoma: immunohistochemical staining for Surfactant Protein A - Clone 32E12

<b>32E12</b>	NCL-L-SP-A	1 mL	-
--------------	------------	------	---

### Synaptophysin

#### HEAD, NECK AND ENDOCRINE



Breast carcinoma showing neuroendocrine differentiation: immunohistochemical staining for Synaptophysin - Clone 27G12

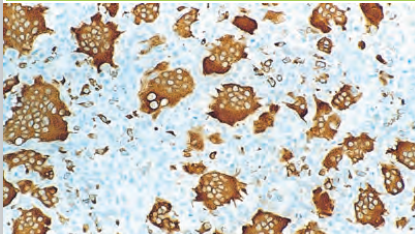
<b>27G12</b>	NCL-L-SYNAP-299	1 mL	HD
	PA0299	7 mL	HD

Products in this brochure are subject to regulatory approval. Please consult your Leica Biosystems Sales Representative for availability in your region.

IVD/CE labelled Class I antibodies are recommended for the detection of specific antigens related to the antibody in normal and neoplastic tissues, as an adjunct to conventional histopathology using non-immunologic histochemical stains.

### Tartrate-Resistant Acid Phosphatase (TRAP)

**HEMATOPATHOLOGY**

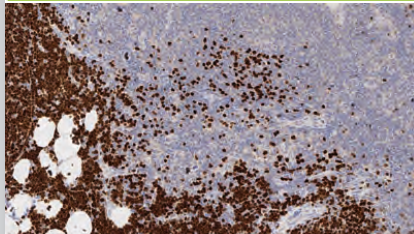


Human osteoclastoma: immunohistochemical staining for Tartrate-Resistant Acid Phosphatase (TRAP) - Clone 26E5

<b>2.60E+06</b>	<b>NCL-L-TRAP</b>	1 mL	-
	<b>PA0093</b>	7 mL	-

### Terminal Deoxynucleotidyl Transferase

**HEMATOPATHOLOGY**

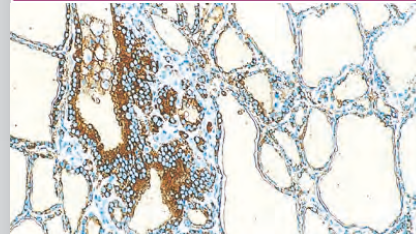


Human thymus: immunohistochemical staining for Terminal Deoxynucleotidyl Transferase. Note nuclear staining for cortical thymic lymphocytes. Terminal deoxynucleotidyl transferase - Clone SEN28

<b>SEN28</b>	<b>NCL-L-TDT-339</b>	1 mL	HD
	<b>PA0339</b>	7 mL	HD

### Thyroglobulin

**HEAD, NECK AND ENDOCRINE**

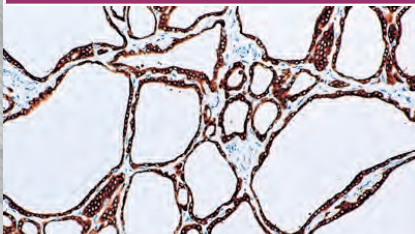


Human Thyroid: immunohistochemical staining of Thyroglobulin in the follicular epithelial cells. Thyroglobulin - Clone 1D4

<b>1D4</b>	<b>NCL-L-THY</b>	1 mL	-
------------	------------------	------	---

### Thyroid Peroxidase

**HEAD, NECK AND ENDOCRINE**

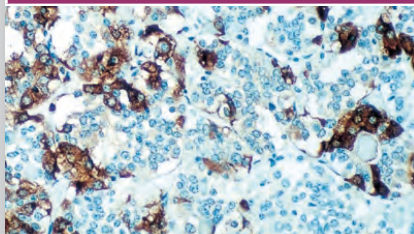


Thyroid, Graves' disease: immunohistochemical staining for Thyroid Peroxidase - Clone AC25

<b>AC25</b>	<b>NCL-L-TPO</b>	1 mL	-
-------------	------------------	------	---

### Thyroid Stimulating Hormone

**HEAD, NECK AND ENDOCRINE**

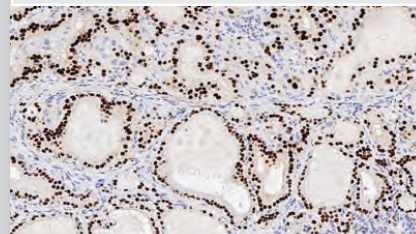


Normal human pituitary gland: immunohistochemical staining for Thyroid Stimulating Hormone. Note cytoplasmic staining of a proportion of anterior pituitary cells. Thyroid Stimulating Hormone - Clone QB2/6

<b>QB2/6</b>	<b>NCL-L-TSH</b>	1 mL	-
	<b>PA0776</b>	7 mL	-

### Thyroid Transcription Factor-1

**LUNG PATHOLOGY**



Human small cell lung carcinoma: immunohistochemical staining with TTF-1 BOND Ready-to-Use Primary Antibody, PA0364. TTF-1 - Clone SPT24

<b>SPT24</b>	<b>NCL-L-TTF-1</b>	1 mL	HD
	<b>PA0364</b>	7 mL	HD

### TIM-3

**IMMUNO ONCOLOGY**



Human tonsil, immunohistochemical staining for TIM-3 - Clone EPR22241

<b>EPR22241</b>	<b>PA0360</b>	7 mL	-
-----------------	---------------	------	---

### Topoisomerase I

**SPECIALIZED**

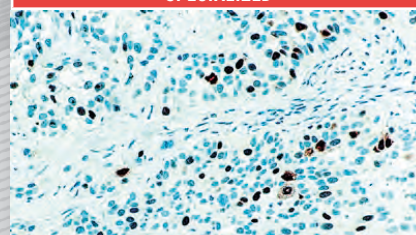


Human tonsil: immunohistochemical staining for Topoisomerase I - Clone 1D6

<b>1D6</b>	<b>NCL-L-TOPO I</b>	1 mL	-
------------	---------------------	------	---

### Topoisomerase II Alpha

**SPECIALIZED**



Human bladder tumor: immunohistochemical staining for Topoisomerase II Alpha - Clone 3F6

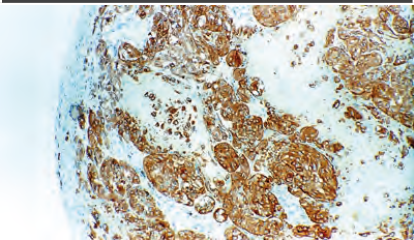
<b>3F6</b>	<b>NCL-L-TOPOIIA</b>	1 mL	-
------------	----------------------	------	---

Products in this brochure are subject to regulatory approval. Please consult your Leica Biosystems Sales Representative for availability in your region.

IVD/CE labelled Class I antibodies are recommended for the detection of specific antigens related to the antibody in normal and neoplastic tissues, as an adjunct to conventional histopathology using non-immunologic histochemical stains.

### Tyrosinase

#### DERMATOPATHOLOGY

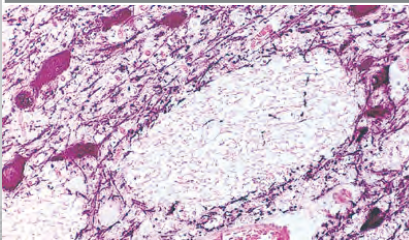


Human malignant melanoma: immunohistochemical staining for Tyrosinase - Clone T311

<b>T311</b>	NCL-L-TYROS	1 mL	-
	PA0322	7 mL	-

### Tyrosine Hydroxylase

#### NEUROPATHOLOGY

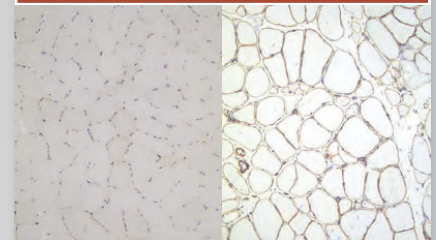


Human midbrain: immunohistochemical staining of Tyrosine Hydroxylase enzyme. Note cytoplasmic staining of catecholaminergic cells and their processes. (Peroxidase substrate: nickel DAB, Counterstain: eosin). Tyrosine Hydroxylase - Clone 1B5

<b>1B5</b>	NCL-L-TH	1 mL	-
------------	----------	------	---

### Utrophin

#### MUSCLE PATHOLOGY

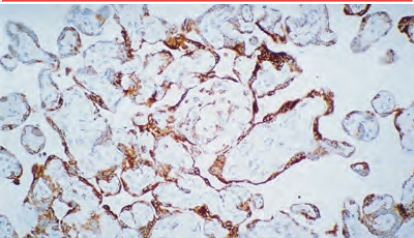


Human skeletal muscle: immunohistochemical staining for Utrophin. In control muscle the antibody labels blood vessels and neuromuscular junctions (A). Utrophin is expressed at the sarcolemma in individuals with mutations in the DMD gene (B). Utrophin - Clone DRP3/20C5

<b>DRP3/20C5</b>	NCL-DRP2	1 mL	-
------------------	----------	------	---

### Vascular Endothelial Growth Factor Receptor-3

#### SPECIALIZED

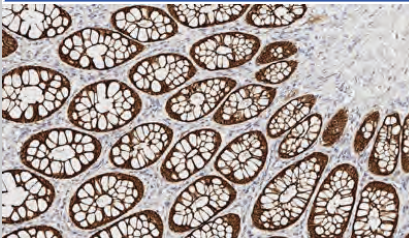


Human placenta: immunohistochemical staining for Vascular Endothelial Growth Factor Receptor-3 - Clone KLT9

<b>KLT9</b>	NCL-L-VEGFR-3	1 mL	-
-------------	---------------	------	---

### Villin

#### GASTROINTESTINAL PATHOLOGY

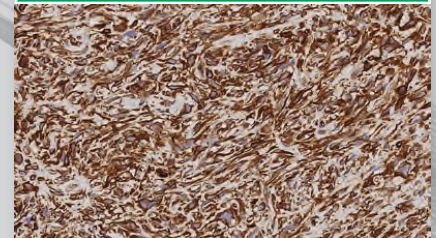


Human large bowel: immunohistochemical staining for Villin. Note cytoplasmic staining of the epithelial cells. Villin - Clone CWWB1

<b>CWWB1</b>	NCL-L-VILLIN	1 mL	-
--------------	--------------	------	---

### Vimentin

#### TUMOR DIFFERENTIATION

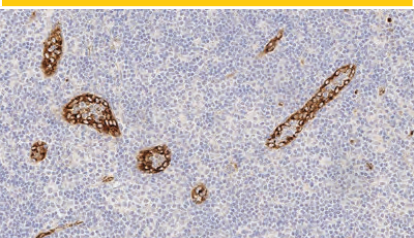


Spindle cell carcinoma: immunohistochemical staining for Vimentin - Clone V9

<b>V9</b>	NCL-L-VIM-V9	1 mL	HD
	PA0640	7 mL	HD
<b>SRL33</b>	NCL-L-VIM-572	1 mL	-

### von Willebrand Factor (Factor VIII-related antigen)

#### SOFT TISSUE PATHOLOGY

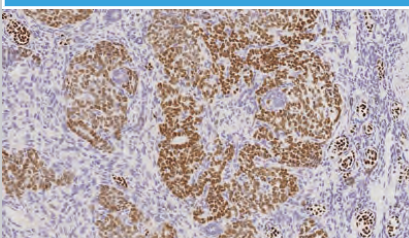


Human tonsil: immunohistochemical staining for von Willebrand Factor. Note cytoplasmic staining of endothelial cells. Von Willebrand Factor - Clone 36B11

<b>36B11</b>	NCL-L-vWF	1 mL	-
	PA0055	7 mL	-

### Wilms' Tumor

#### UROPATHOLOGY

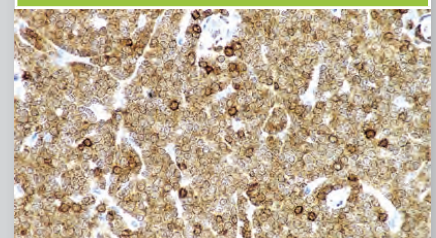


Human kidney: immunohistochemical staining for Wilms' Tumor - Clone WT49

<b>WT49</b>	NCL-L-WT1-562	1 mL	HD
	PA0562	7 mL	HD

### Zap-70

#### HEMATOPATHOLOGY



Human B cell chronic lymphocytic leukemia: immunohistochemical staining for ZAP-70 antigen - Clone L453R


<b>L453R</b>	NCL-L-ZAP-70	1 mL	-
	PA0998	7 mL	-

Products in this brochure are subject to regulatory approval. Please consult your Leica Biosystems Sales Representative for availability in your region.

IVD/CE labelled Class I antibodies are recommended for the detection of specific antigens related to the antibody in normal and neoplastic tissues, as an adjunct to conventional histopathology using non-immunologic histochemical stains.

**Negative Control (Mouse)**

CONTROL

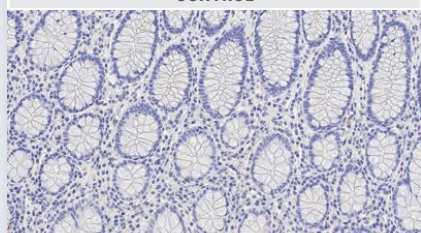


Human tonsil: immunohistochemical staining with BOND Ready-to-Use Negative Control (Mouse) using BOND Polymer Refine Detection. Negative Control (Mouse): clone MOPC-21

MOPC-21	PA0996	7 mL	-
---------	--------	------	---

**Negative Control (Rabbit)**

CONTROL



Human bowel: immunohistochemical staining with BOND Ready-to-Use Negative Control (Rabbit) using BOND Polymer Refine Detection. Negative Control

Polyclonal	PA0777	7 mL	-
------------	--------	------	---

LEICA BIOSYSTEMS IS AN INTERNATIONAL COMPANY WITH A STRONG NETWORK OF WORLDWIDE CUSTOMER SERVICES

For detailed contact information on your nearest sales office or distributor please visit our website: [LeicaBiosystems.com](http://LeicaBiosystems.com)

Leica Biosystems is a global leader in workflow solutions and automation. As the only company to own the workflow from biopsy to diagnosis, we are uniquely positioned to break down the barriers between each of these steps. Our mission of "Advancing Cancer Diagnostics, Improving Lives" is at the heart of our corporate culture. Our easy-to-use and consistently reliable offerings help improve workflow efficiency and diagnostic confidence. The company is represented in over 100 countries. It has manufacturing facilities in 9 countries, sales and service organizations in 19 countries, and an international network of dealers. The company is headquartered in Nussloch, Germany. Visit [LeicaBiosystems.com](http://LeicaBiosystems.com) for more information.

Copyright © 2021 Leica Biosystems Newcastle Ltd. All rights reserved. LEICA and the Leica Logo are registered trademarks of Leica Microsystems IR GmbH. BOND and Novocastra are trademarks of the Leica Biosystems group of companies in the USA and optionally in other countries. Other logos, product and/or company names might be trademarks of their respective owners.

18191 Rev D · 12/2021