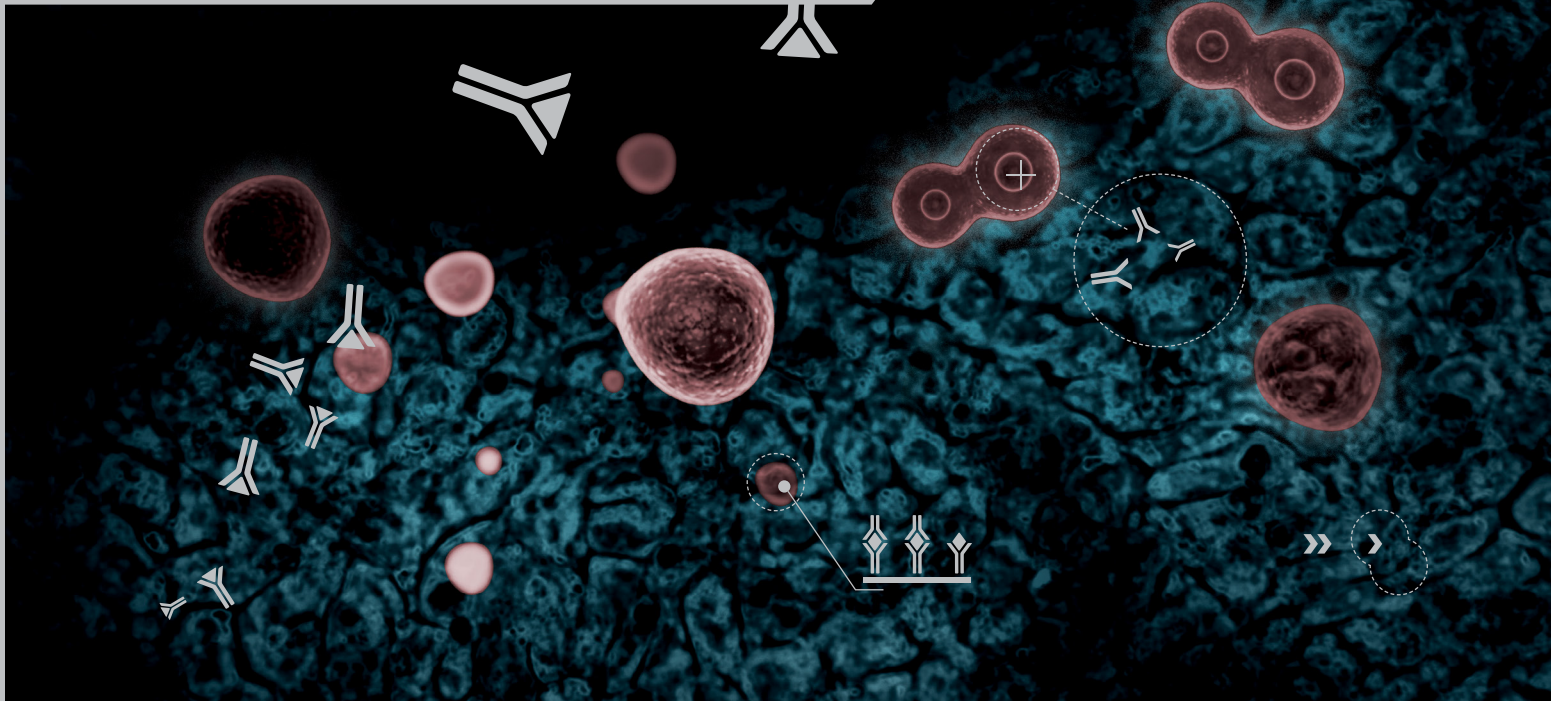


BIOVENDOR

RESEARCH AND DIAGNOSTIC PRODUCTS

RESEARCH TOPICS INDEX



Immunoassays

Enzyme-Linked Immunosorbent Assay (ELISA) combines the specificity of antibodies with the sensitivity of enzyme catalysis-multiplied signal. The ability of the antibodies to recognize individual target molecules and bind them with high affinity is joined with our ability to prepare antibodies of the required characteristics by modern technologies. It makes immunoanalytical or immunodiagnostic methods powerful tools for the determination of specified molecule concentration in very complex biological matrices like serum/plasma, cerebrospinal fluid, bronchoalveolar lavage, urine, breast milk, tissue extracts, cell culture media, etc. The method is characterized by high sample throughput and does not require expensive equipment in the laboratory. BioVendor's use of modern immunoassay formats has enabled high assay sensitivity, with an emphasis on superior analytical characteristics and user-friendly kit performance.

► FEATURES

Format

A broad spectrum of ELISA or ELISA-like assay formats is used. You can find a short description in the catalog and a detailed description in the product datasheet for each kit.

Samples

Follow instructions for sample collection, preparation and storage as described in the product datasheet referring to a particular kit.

Applications

See the product datasheet to learn which of the biological matrices such as serum/plasma, cerebrospinal fluid, bronchoalveolar lavage, urine, breast milk, tissue extracts, cell culture media, etc. were evaluated for a particular kit.

Specificity

We offer ELISAs applicable for samples of human origin as well as the most commonly used animal models (mouse, rat and others). The main application is indicated by a product name. Read the product datasheet referring to a particular kit to find full cross-reactivity data.

Storage

The kits are typically stored at 2~8 °C, some of them at -20°. Please follow the storage conditions that are indicated on the kit packaging label.

RUO

Products intended for research use only.

IVD

Some of BioVendor's ELISA kits are registered to be used as *in vitro* diagnostic medical devices according to the EU Directive 98/79/EC. Those kits are labeled with **IVD CE mark** and are approved to be used as *in vitro* diagnostics in the EU countries or in the countries where this registration is accepted. In the countries where this registration is not valid, the same kits have to be used as Research-Use-Only products. This limitation applies particularly, but not exclusively, to the USA, Canada and Japan.

Quality Control

BioVendor's ELISA kits pass quality control tests and are provided with a Certificate of Analysis.

ANIMAL STUDIES

HUMAN 8-OHdG CHECK ELISA (MULTISPECIES SPECIFICITY)
 HUMAN 8-OHdG CHECK (ULTRASENSITIVE) ELISA (MULTISPECIES SPECIFICITY)

A MOUSE ADIPOCYTE FABP ELISA
 MOUSE ADIPONECTIN ELISA
 MOUSE/RAT ADIPONECTIN HMW ELISA
 BOVINE ALBUMIN ELISA
 MOUSE ALBUMIN ELISA
 RAT ALBUMIN ELISA
 RAT ALBUMIN, HIGH SENSITIVITY ELISA
 MOUSE ALBUMIN URINARY (S-TYPE) ASSAY
 RAT ALBUMIN URINARY (S-TYPE) ASSAY
 RAT ALPHA-1-ACID GLYCOPROTEIN ELISA
 ANDROSTENEDIONE ELISA
 MOUSE/RAT ANGIOPOIETIN-LIKE PROTEIN 3 ELISA
 MOUSE ANTI-dsDNA ELISA
 RAT ANTI-KLH IgG ELISA
 RAT ANTI-KLH IgM ELISA
 MOUSE ANTI-OVA-IgE ELISA
 MOUSE ANTI-OVA-IgG1 ELISA
 MOUSE ANTI-ssDNA ELISA

B RAT BETA2-MICROGLOBULIN ELISA

C MOUSE CASPASE-1 ELISA
 MOUSE sCD40L ELISA
 RAT CINC-1 ELISA
 CANINE CLUSTERIN ELISA
 RAT CLUSTERIN ELISA
 MOUSE/RAT CORTICOSTERONE ELISA
 MOUSE/RAT CORTICOTROPIN RELEASING FACTOR ELISA, SENSITIVE, EXTRACTION-FREE
 MOUSE C-PEPTIDE (U-TYPE) ELISA
 RAT C-PEPTIDE (U-TYPE) ELISA
 CANINE C-REACTIVE PROTEIN ELISA, HIGH SENSITIVITY
 MOUSE C-REACTIVE PROTEIN ELISA, HIGH SENSITIVITY
 RAT C-REACTIVE PROTEIN ELISA, HIGH SENSITIVITY
 CANINE CYSTATIN C ELISA
 MOUSE CYSTATIN C ELISA
 RAT CYSTATIN C ELISA

D DEHYDROEPIANDROSTERONE ELISA
 DEHYDROEPIANDROSTERONE FREE IN SALIVA ELISA

E MOUSE EOTAXIN ELISA
 RAT ESTRADIOL ELISA
 ESTRADIOL FREE IN SALIVA ELISA

F RAT FERRITIN ELISA
 MOUSE/RAT FIBROBLAST GROWTH FACTOR-21 ELISA

G CANINE GHRELIN ACYLATED EASY SAMPLING ELISA
 HUMAN GHRELIN ACYLATED ELISA
 PORCINE GHRELIN ACYLATED ELISA
 RAT GHRELIN ACYLATED ELISA
 HUMAN GHRELIN UNACYLATED EASY SAMPLING ELISA
 PORCINE GHRELIN UNACYLATED ELISA

RAT GHRELIN UNACYLATED ELISA
 RAT GLICENTIN ELISA
 HUMAN GLUCAGON ELISA (MULTISPECIES SPECIFICITY)
 HUMAN GLUCAGON-LIKE PEPTIDE-1 ELISA (MULTISPECIES SPECIFICITY)
 HUMAN GLUCAGON-LIKE PEPTIDE-2 ELISA
 MOUSE GLUCAGON-LIKE PEPTIDE-2 ELISA
 MOUSE GM-CSF ELISA
 RAT GM-CSF ELISA
 RAT GROWTH HORMONE ELISA
 RAT GROWTH HORMONE (GH) ELISA

H RAT HEMOGLOBIN ELISA

I MONKEY sICAM-1 ELISA
 PORCINE IFN-ALPHA 1 ELISA
 MOUSE IFN-GAMMA ELISA
 PIG IFN-GAMMA ELISA
 RAT IFN-GAMMA ELISA
 MOUSE/RAT IGFBP-2 ELISA
 MOUSE/RAT IGFBP-3 ELISA
 MOUSE IMMUNOGLOBULIN E ELISA
 RAT IMMUNOGLOBULIN E ELISA
 CANINE INSULIN ELISA
 HUMAN INSULIN ELISA (MULTISPECIES SPECIFICITY)
 MOUSE INSULIN ELISA, HIGH SENSITIVE
 MOUSE/RAT INSULIN ELISA
 RAT INSULIN ELISA
 RAT INSULIN ELISA, HIGH SENSITIVE
 MOUSE INSULIN (S-TYPE) ELISA
 MOUSE INSULIN ELISA, ULTRA SENSITIVE
 RAT INSULIN ELISA, ULTRA SENSITIVE
 MOUSE INSULIN ELISA, WIDE RANGE
 RAT INSULIN ELISA, WIDE RANGE
 PORCINE INSULIN ELISA
 MOUSE INTERLEUKIN-1 ALPHA ELISA
 RAT INTERLEUKIN-1 ALPHA ELISA
 MONKEY INTERLEUKIN-1 BETA ELISA
 MOUSE INTERLEUKIN-1 BETA ELISA
 RAT INTERLEUKIN-1 BETA ELISA
 MONKEY INTERLEUKIN-2 ELISA
 MOUSE INTERLEUKIN-2 ELISA
 RAT INTERLEUKIN-2 ELISA
 MOUSE INTERLEUKIN-4 ELISA
 RAT INTERLEUKIN-4 ELISA
 MOUSE INTERLEUKIN-5 ELISA
 MONKEY INTERLEUKIN-6 ELISA
 MOUSE INTERLEUKIN-6 ELISA
 PORCINE INTERLEUKIN-6 ELISA
 RAT INTERLEUKIN-6 ELISA
 MONKEY INTERLEUKIN-8 ELISA
 PORCINE INTERLEUKIN-10 ELISA
 RAT INTERLEUKIN-10 ELISA
 MONKEY INTERLEUKIN-12 (p70) ELISA
 MOUSE INTERLEUKIN-12 (p70) ELISA
 MOUSE INTERLEUKIN-12 TOTAL (p40 + p70) ELISA
 MOUSE INTERLEUKIN-13 ELISA
 MOUSE INTERLEUKIN-15/INTERLEUKIN-15 RECEPTOR ELISA
 RAT INTERLEUKIN-17A ELISA
 MOUSE INTERLEUKIN-17 ELISA

IMMUNOASSAYS INDEX

MOUSE INTERLEUKIN-17F ELISA
 MOUSE INTERLEUKIN-18 ELISA
 PIG INTERLEUKIN-18 ELISA
 MOUSE INTERLEUKIN-23 ELISA
 MOUSE IP-10 ELISA

L MOUSE/RAT LEPTIN ELISA
 RAT LH ELISA (S-TYPE) ELISA, HIGH SENSITIVITY

O MOUSE/RAT OBESTATIN ELISA

P MONKEY sPECAM-1 ELISA
 MOUSE/RAT PROGESTERONE ELISA
 CANINE PROLACTIN ELISA
 MOUSE PROLACTIN ELISA
 RAT PROLACTIN ELISA
 RAT PYY ELISA

Q RAT QUALITY CONTROL SET
 (CORTICOSTERONE, PROLACTIN, TESTOSTERONE, TSH)

R MOUSE/RAT RBP4 ELISA
 RAT RESISTIN ELISA
 MOUSE IgG RHEUMATOID FACTOR ELISA
 MOUSE IgM RHEUMATOID FACTOR ELISA

S MONKEY sE-SELECTIN ELISA
 MONKEY P-SELECTIN ELISA

T MOUSE/RAT TESTOSTERONE ELISA
 MOUSE TGF-BETA1 ELISA
 RAT TGF-BETA1 ELISA
 CANINE THYROID STIMULATING HORMONE ELISA
 CANINE THYROID STIMULATING HORMONE CONTROL SET
 RAT THYROID STIMULATING HORMONE ELISA
 MONKEY TNF-ALPHA ELISA
 MOUSE TNF-ALPHA ELISA
 PORCINE TNF-ALPHA ELISA
 RAT TNF-ALPHA ELISA
 MONKEY STNF-R I ELISA
 RAT TRANSFERRIN ELISA

U MOUSE UROCORTIN 2 ELISA
 MOUSE/RAT UROCORTIN 3 ELISA

V MOUSE VEGF-A ELISA
 RAT VEGF-C ELISA
 MOUSE/RAT VISFATIN (NAMPT) ELISA

APOPTOSIS

A HUMAN ANNEXIN A1 ELISA
 HUMAN sAPO-1/Fas ELISA
 HUMAN APRIL ELISA

B HUMAN Bcl-2 ELISA

C MOUSE CASPASE-1 ELISA

HUMAN CASPASE-8/FLICE ELISA
 HUMAN CASPASE-9 ELISA
 HUMAN sCD40 ELISA
 HUMAN sCD40L ELISA
 MOUSE sCD40L ELISA
 HUMAN CYTOCHROME c ELISA

F HUMAN sFAS LIGAND ELISA

G HUMAN GALECTIN-1 ELISA
 HUMAN GRANZYME B ELISA

I HUMAN IGFBP-7 ELISA

P HUMAN PERFORIN ELISA

S HUMAN SERGLYCIN ELISA

T HUMAN TRAIL ELISA
 HUMAN TRAIL RECEPTOR 1 (CD261) ELISA
 HUMAN TRAIL RECEPTOR 2 (CD262) ELISA
 HUMAN TRAIL RECEPTOR 3 (CD263) ELISA
 HUMAN TRAIL RECEPTOR 4 (CD264) ELISA

AUTOIMMUNITY

HUMAN 21-HYDROXYLASE (21-OH) AUTOANTIBODY ELISA
 HUMAN 2 SCREEN ISLET CELL AUTOANTIBODY ELISA

A HUMAN ACETYLCHOLINE RECEPTOR AUTOANTIBODY ELISA
 HUMAN ANNEXIN A1 ELISA
 HUMAN ANNEXIN V ELISA
 HUMAN ANTI-ALPHA-GALACTOSYL IgA ELISA
 HUMAN ANTI-ALPHA-GALACTOSYL IgG ELISA
 HUMAN ANTI-ALPHA-GALACTOSYL IgM ELISA
 HUMAN ANTI-ANNEXIN V ELISA
 HUMAN ANTI-IFN-ALPHA ELISA
 HUMAN **ANTI-IgA ISOTYPE IgG ELISA (IVD CE)**

C HUMAN sCD40L ELISA
 HUMAN sCD44STD ELISA
 HUMAN CYSTATIN B ELISA

G HUMAN GAD AUTOANTIBODY ELISA
 HUMAN GRP-78 ELISA

I HUMAN IA-2 AUTOANTIBODY ELISA
 PORCINE IFN-GAMMA 1 ELISA
 HUMAN **IMMUNOGLOBULIN A (SECRETORY)
 IN STOOL ELISA (IVD CE)**
 HUMAN IMMUNOGLOBULIN FREE LIGHT CHAINS KAPPA
 AND LAMBDA ELISA

M HUMAN MACROPHAGE MIGRATION INHIBITORY FACTOR ELISA

T HUMAN TSH RECEPTOR AUTOANTIBODY ELISA 2. GENERATION
 HUMAN TSH RECEPTOR AUTOANTIBODY ELISA 3. GENERATION
 HUMAN TSH RECEPTOR AUTOANTIBODY FAST ELISA

S SECRETORY IgA ELISA

BLOOD PRESSURE REGULATION AND NO METABOLISM

A **ADMA ELISA (IVD CE)**
ADMA ELISA, HIGH SENSITIVITY
ADMA FAST ELISA (IVD CE)
ALDOSTERONE ELISA
HUMAN/RAT ANGIOTENSIN II ELISA
HUMAN ARGINASE LIVER TYPE ELISA

N HUMAN/RAT NO SYNTHASE I ELISA

P HUMAN PRORENIN ELISA

R HUMAN ACTIVE RENIN ELISA
HUMAN RENIN ELISA

S HUMAN **SDMA ELISA (IVD CE)**

BONE AND CARTILAGE METABOLISM

1,25OH₂ VITAMIN D ELISA
EXTRACTION CARTRIDGES FOR 1,25(OH)₂ VITAMIN D TOTAL ELISA
EXTRACTION KIT FOR 1,25(OH)₂ VITAMIN D TOTAL ELISA

HUMAN 25-OH-VITAMIN-D ELISA
RAT **25-OH-VITAMIN D ELISA (IVD CE)**
25-OH-VITAMIN-D ELISA

A HUMAN AGGREGAN (PG) ELISA

C HUMAN CALCITONIN (CT) ELISA, HIGH SENSITIVITY
HUMAN **CARTILAGE OLIGOMERIC MATRIX PROTEIN ELISA (IVD CE)**

D HUMAN DICKKOPF-RELATED PROTEIN 1 ELISA

E HUMAN ENPP1 ELISA
HUMAN ERYTHROPOIETIN ELISA

F HUMAN **FETUIN-A (AHSG) ELISA (IVD CE)**
HUMAN FETUIN-B ELISA
HUMAN FOLLISTATIN ELISA

L HUMAN LACTOFERRIN ELISA

O HUMAN OSTEOCALCIN (OST) ELISA
HUMAN OSTEOPONTIN ELISA
HUMAN **OSTEOPROTEGERIN ELISA (IVD CE)**
HUMAN OSTEOPROTEGERIN ELISA

P HUMAN PERIOSTIN ELISA
MOUSE PERIOSTIN ELISA
HUMAN PARATHYROID HORMONE (PTH) ELISA

S HUMAN sRANKL (TOTAL) ELISA (OSTEOPROTEGERIN LIGAND)
HUMAN STANNIOCALCIN 1 ELISA

T HUMAN TRAP 5 ASSAY

CARDIOVASCULAR DISEASE

A HUMAN **ADIPONECTIN ELISA (IVD CE)**
HUMAN **ADIPONECTIN ELISA, HIGH SENSITIVITY (IVD CE)**
HUMAN ADIPONECTIN HMW ELISA
MOUSE ADIPONECTIN ELISA
MOUSE/RAT ADIPONECTIN HMW ELISA
ADMA ELISA (IVD CE)
ADMA ELISA, HIGH SENSITIVITY
ADMA FAST ELISA (IVD CE)
ALDOSTERONE ELISA
HUMAN APOLIPOPROTEIN B-48 ELISA
HUMAN APOPTOSIS INHIBITOR OF MACROPHAGE ELISA
RAT ATRIOPEPTIN ELISA

C HUMAN CASPASE-8/FLICE ELISA
HUMAN sCD40L ELISA
MOUSE sCD40L ELISA
HUMAN CRGP AFFINITY SORBENT
RAT CRGP EIA KIT
HUMAN CRGP EIA KIT
HUMAN CTRP1 ELISA
HUMAN CTRP9 ELISA
HUMAN CYCLOPHILIN A ELISA

D HUMAN DECORIN ELISA

E HUMAN ENDOCAN ELISA
HUMAN EPIDERMAL FABP ELISA

F HUMAN **FETUIN-A (AHSG) ELISA (IVD CE)**

G HUMAN **GDF-15/MIC-1 ELISA (IVD CE)**
HUMAN GRP-78 ELISA

H HUMAN HAPTOGLOBIN ELISA
HUMAN **HEART FABP (FABP3) ELISA (IVD CE)**
HOMOARGININE ELISA

I HUMAN INTERLEUKIN-33 ELISA

L HUMAN LECITHIN-CHOLESTEROL ACYLTRANSFERASE ELISA

M HUMAN MATRIX METALLOPROTEINASE-8 ELISA
HUMAN MPO ELISA
HUMAN MyBPC3 ELISA

N HUMAN **NT-proANP ELISA (IVD CE)**
HUMAN NT-proBNP ELISA

O HUMAN OSTEOPONTIN ELISA

P HUMAN PARAOXONASE 1 ELISA
HUMAN **PCSK9 ELISA (IVD CE)**
HUMAN **PENTRAXIN 3 ELISA (IVD CE)**

HUMAN PERIOSTIN ELISA
 MOUSE PERIOSTIN ELISA
 HUMAN PLACENTAL GROWTH FACTOR ELISA
 HUMAN PRORENIN ELISA
 HUMAN TOTAL PRORENIN/RENIN ELISA

R HUMAN ACTIVE RENIN ELISA
 HUMAN RENIN ELISA

T HUMAN TROPONIN I ELISA

CELL ADHESION PROTEINS

C HUMAN sCD44STD ELISA
 HUMAN sCD44VAR (V5) ELISA
 HUMAN sCD44VAR (V6) ELISA

I HUMAN sICAM-1 ELISA
 MONKEY sICAM-1 ELISA
 HUMAN sICAM-2 ELISA
 HUMAN sICAM-3 ELISA

P HUMAN sPECAM-1 ELISA
 MONKEY sPECAM-1 ELISA
 HUMAN sPSGL-1 ELISA

S HUMAN sE-SELECTIN ELISA
 MONKEY sE-SELECTIN ELISA
 HUMAN sL-SELECTIN ELISA
 HUMAN sP-SELECTIN ELISA
 MONKEY P-SELECTIN ELISA

V HUMAN sVAP-1 ELISA
 HUMAN sVCAM-1 ELISA
 HUMAN sVE-CADHERIN ELISA

CELL SURFACE PROTEINS (SCD)

C HUMAN CD14 ELISA
 HUMAN CD21 ELISA
 HUMAN sCD23 ELISA
 HUMAN sCD28 ELISA
 HUMAN sCD30 ELISA
 HUMAN sCD40 ELISA
 HUMAN sCD40L ELISA
 MOUSE sCD40L ELISA
 HUMAN sCD44STD ELISA
 HUMAN sCD44VAR (V5) ELISA
 HUMAN sCD44VAR (V6) ELISA
 HUMAN sCD134 (OX40) ELISA
 HUMAN sCD137/4-1BB ELISA
 HUMAN sCD152/CTLA-4 ELISA

D HUMAN DIPEPTIDYL PEPTIDASE IV (CD26) ELISA
 HUMAN INTERLEUKIN-4 RECEPTOR (CD124) ELISA
 HUMAN STEM CELL FACTOR RECEPTOR (CD117) ELISA
 HUMAN SYNDECAN-1 (CD138) ELISA
 MOUSE SYNDECAN-1 (CD138) ELISA
 HUMAN THROMBOMODULIN (CD141) ELISA

CHRONIC RENAL FAILURE

A HUMAN ADIPONECTIN ELISA (IVD CE)
 HUMAN ADIPONECTIN ELISA, HIGH SENSITIVITY (IVD CE)
 HUMAN ADIPONECTIN HMW ELISA
 MOUSE ADIPONECTIN ELISA
 MOUSE/RAT ADIPONECTIN HMW ELISA

CORONARY ARTERY DISEASE

A HUMAN ADIPONECTIN ELISA (IVD CE)
 HUMAN ADIPONECTIN ELISA, HIGH SENSITIVITY (IVD CE)
 HUMAN ADIPONECTIN HMW ELISA
 MOUSE ADIPONECTIN ELISA
 MOUSE/RAT ADIPONECTIN HMW ELISA

CYTOKINES AND CHEMOKINES AND RELATED MOLECULES

A HUMAN ANTI-IFN-ALPHA ELISA
 HUMAN APRIL ELISA

C HUMAN sCD40L ELISA
 MOUSE sCD40L ELISA
 RAT CINC-1 ELISA

G HUMAN GM-CSF ELISA
 MOUSE GM-CSF ELISA
 RAT GM-CSF ELISA
 HUMAN GM-CSF RECEPTOR α CHAIN (CD116) ELISA

I HUMAN IFN-ALPHA ELISA
 PORCINE IFN-ALPHA 1 ELISA
 HUMAN IFN-GAMMA ELISA
 HUMAN IFN-GAMMA ELISA, HIGH SENSITIVITY
 MOUSE IFN-GAMMA ELISA
 PIG IFN-GAMMA ELISA
 RAT IFN-GAMMA ELISA
 HUMAN IFN-OMEGA ELISA
 HUMAN IL-1RACP / IL-1R3 ELISA
 HUMAN INTERLEUKIN-1 ALPHA ELISA
 MOUSE INTERLEUKIN-1 ALPHA ELISA
 RAT INTERLEUKIN-1 ALPHA ELISA
 HUMAN INTERLEUKIN-1RA ELISA
 HUMAN INTERLEUKIN-1 BETA ELISA
 MONKEY INTERLEUKIN-1 BETA ELISA
 MOUSE INTERLEUKIN-1 BETA ELISA
 RAT INTERLEUKIN-1 BETA ELISA
 HUMAN INTERLEUKIN-2 ELISA
 HUMAN INTERLEUKIN-2 ELISA, HIGH SENSITIVITY
 MONKEY INTERLEUKIN-2 ELISA
 MOUSE INTERLEUKIN-2 ELISA
 RAT INTERLEUKIN-2 ELISA
 HUMAN sINTERLEUKIN-2 RECEPTOR ELISA
 HUMAN INTERLEUKIN-4 ELISA
 HUMAN INTERLEUKIN-4 ELISA, HIGH SENSITIVITY
 MOUSE INTERLEUKIN-4 ELISA
 RAT INTERLEUKIN-4 ELISA

HUMAN	INTERLEUKIN-4 RECEPTOR (CD124) ELISA
HUMAN	INTERLEUKIN-5 ELISA
MOUSE	INTERLEUKIN-5 ELISA
HUMAN	INTERLEUKIN-6 ELISA (IVD CE)
MONKEY	INTERLEUKIN-6 ELISA
MOUSE	INTERLEUKIN-6 ELISA
PORCINE	INTERLEUKIN-6 ELISA
RAT	INTERLEUKIN-6 ELISA
HUMAN	INTERLEUKIN-6 BETA (CD130) ELISA
HUMAN	sINTERLEUKIN-6 RECEPTOR ELISA
HUMAN	INTERLEUKIN-7 ELISA
HUMAN	INTERLEUKIN-8 ELISA
MONKEY	INTERLEUKIN-8 ELISA
HUMAN	INTERLEUKIN-9 ELISA
HUMAN	INTERLEUKIN-10 ELISA
HUMAN	INTERLEUKIN-10 ELISA, HIGH SENSITIVITY
PORCINE	INTERLEUKIN-10 ELISA
RAT	INTERLEUKIN-10 ELISA
HUMAN	INTERLEUKIN-12 (p70) ELISA
HUMAN	INTERLEUKIN-12 ELISA, HIGH SENSITIVITY
MONKEY	INTERLEUKIN-12 (p70) ELISA
MOUSE	INTERLEUKIN-12 (p70) ELISA
MOUSE	INTERLEUKIN-12 TOTAL (p40 + p70) ELISA
HUMAN	INTERLEUKIN-12/INTERLEUKIN-23 p40 ELISA
HUMAN	INTERLEUKIN-13 ELISA
MOUSE	INTERLEUKIN-13 ELISA
HUMAN	INTERLEUKIN-13 RECEPTOR SUBUNIT ALPHA-2 ELISA
HUMAN	INTERLEUKIN-15 ELISA
MOUSE	INTERLEUKIN-15/INTERLEUKIN-15 RECEPTOR ELISA
HUMAN	INTERLEUKIN-17A ELISA
RAT	INTERLEUKIN-17A ELISA
MOUSE	INTERLEUKIN-17 ELISA
HUMAN	INTERLEUKIN-17AF ELISA
HUMAN	INTERLEUKIN-17F ELISA
MOUSE	INTERLEUKIN-17F ELISA
HUMAN	INTERLEUKIN-18 ELISA
MOUSE	INTERLEUKIN-18 ELISA
PIG	INTERLEUKIN-18 ELISA
HUMAN	INTERLEUKIN-21 ELISA
HUMAN	INTERLEUKIN-22 ELISA
HUMAN	INTERLEUKIN-23 ELISA
MOUSE	INTERLEUKIN-23 ELISA
HUMAN	INTERLEUKIN-27 ELISA
HUMAN	INTERLEUKIN-29 ELISA
HUMAN	INTERLEUKIN-31 ELISA
HUMAN	INTERLEUKIN-33 ELISA
HUMAN	IP-10 ELISA
MOUSE	IP-10 ELISA

L HUMAN LECT2 ELISA
HUMAN LIF ELISA

M HUMAN MACROPHAGE MIGRATION INHIBITORY FACTOR ELISA
HUMAN MICA ELISA
HUMAN MONOCYTE CHEMOTACTIC PROTEIN-1 ELISA
MOUSE MONOCYTE CHEMOTACTIC PROTEIN-1 ELISA

P HUMAN PERIOSTIN ELISA
MOUSE PERIOSTIN ELISA

T HUMAN TGF-BETA1 ELISA
MOUSE TGF-BETA1 ELISA
RAT TGF-BETA1 ELISA
HUMAN TGF-BETA2 ELISA
HUMAN TIE-2 ELISA
HUMAN TNF-ALPHA ELISA
HUMAN TNF-ALPHA ELISA, HIGH SENSITIVITY
HUMAN TNF-ALPHA TOTAL ELISA
MONKEY TNF-ALPHA ELISA
MOUSE TNF-ALPHA ELISA
PORCINE TNF-ALPHA ELISA
RAT TNF-ALPHA ELISA
HUMAN TNF-BETA ELISA
HUMAN sTNF-R (60kDA) ELISA
HUMAN sTNF-R (80kDA) ELISA
MONKEY sTNF-R I ELISA

V HUMAN VEGF-A ELISA
MOUSE VEGF-A ELISA
HUMAN VEGF-C ELISA
RAT VEGF-C ELISA
HUMAN sVEGF-R1 ELISA
HUMAN VEGF-R1/FLT-1 ELISA
HUMAN VEGF-R2/KDR ELISA
HUMAN VEGF-R3/FLT-4 ELISA

DIABETOLOGY

HUMAN 2 SCREEN ISLET CELL AUTOANTIBODY ELISA

A HUMAN ACETYLCHOLINE RECEPTOR AUTOANTIBODY ELISA
HUMAN **ADIPOCYTE FABP ELISA (IVD CE)**
MOUSE ADIPOCYTE FABP ELISA
HUMAN **ADIPONECTIN ELISA (IVD CE)**
HUMAN **ADIPONECTIN ELISA, HIGH SENSITIVITY (IVD CE)**
HUMAN ADIPONECTIN HMW ELISA
MOUSE ADIPONECTIN ELISA
MOUSE/RAT ADIPONECTIN HMW ELISA
HUMAN AFAMIN ELISA
HUMAN ANNEXIN V ELISA
HUMAN ANTI-ANNEXIN V ELISA
HUMAN ANTI-IFN-ALPHA ELISA
HUMAN ANTI-IgA IgG ELISA
HUMAN APOLIPOPROTEIN M ELISA

B HUMAN BETATROPHIN ELISA
MOUSE BETATROPHIN ELISA

C HUMAN C-PEPTIDE ELISA
MOUSE C-PEPTIDE (U-TYPE) ELISA
RAT C-PEPTIDE (U-TYPE) ELISA
HUMAN sCD26 ELISA
HUMAN sCD44STD ELISA

D HUMAN DsbA-L ELISA

E HUMAN ENPP1 ELISA

G CANINE GHRELIN ACYLATED EASY SAMPLING ELISA
HUMAN GHRELIN ACYLATED ELISA

PORCINE GHRELIN ACYLATED ELISA
 HUMAN GHRELIN EASY SAMPLING ELISA
 MOUSE/RAT GHRELIN EASY SAMPLING ELISA
 HUMAN GHRELIN UNACYLATED EASY SAMPLING ELISA
 PORCINE GHRELIN UNACYLATED ELISA
 HUMAN GLUCAGON ELISA (MULTISPECIES SPECIFICITY)
 HUMAN GLUCAGON-LIKE PEPTIDE-1 ELISA (MULTISPECIES SPECIFICITY)
 HUMAN GLUCAGON-LIKE PEPTIDE-2 ELISA
 MOUSE GLUCAGON-LIKE PEPTIDE-2 ELISA
 RAT GLUCAGON-LIKE PEPTIDE-2 ELISA

H HUMAN HAPTOGLOBIN ELISA

I HUMAN IA-2 AUTOANTIBODY ELISA
 HUMAN IGFBP-7 ELISA
 HUMAN **IMMUNOGLOBULIN A (SECRETORY) IN STOOL ELISA (IVD CE)**
 MOUSE IMMUNOGLOBULIN E ELISA
 RAT IMMUNOGLOBULIN E ELISA
 HUMAN IMMUNOGLOBULIN FREE LIGHT CHAINS ELISA
 CANINE INSULIN ELISA
 HAMSTER INSULIN STANDARD ELISA
 HUMAN INSULIN ELISA
 HUMAN INSULIN ELISA (MULTISPECIES SPECIFICITY)
 MOUSE/RAT INSULIN ELISA
 MOUSE INSULIN ELISA, HIGH SENSITIVE
 MOUSE INSULIN ELISA, ULTRA SENSITIVE
 MOUSE INSULIN ELISA, WIDE RANGE
 MOUSE INSULIN (S-TYPE) ELISA
 PORCINE INSULIN ELISA
 RAT INSULIN ELISA
 RAT INSULIN ELISA, HIGH SENSITIVE
 RAT INSULIN ELISA, ULTRA SENSITIVE
 RAT INSULIN ELISA, WIDE RANGE

L HUMAN LECT2 ELISA

N HUMAN NT-proBNP ELISA

O HUMAN OMENTIN-1 ELISA
 HUMAN OSTEOPOINTIN ELISA

P HUMAN **PCSK9 ELISA (IVD CE)**
 HUMAN **PROINSULIN INTACT ELISA (IVD CE)**
 HUMAN PRORENIN ELISA
 HUMAN TOTAL PRORENIN/RENIN ELISA

R HUMAN sRAGE ELISA
 HUMAN RBP4 ELISA
 HUMAN RBP4 ELISA, HIGH SENSITIVITY
 MOUSE/RAT RBP4 ELISA
 HUMAN ACTIVE RENIN ELISA
 HUMAN RENIN ELISA

S HUMAN SECRETAGOGIN ELISA

T HUMAN TSH RECEPTOR AUTOANTIBODY ELISA 2. GENERATION

V HUMAN VASPIN ELISA

ENERGY METABOLISM AND BODY WEIGHT REGULATION

A HUMAN **ADIPOCYTE FABP ELISA (IVD CE)**
 MOUSE ADIPOCYTE FABP ELISA
 HUMAN **ADIPONECTIN ELISA (IVD CE)**
 HUMAN **ADIPONECTIN ELISA, HIGH SENSITIVITY (IVD CE)**
 HUMAN ADIPONECTIN HMW ELISA
 MOUSE ADIPONECTIN ELISA
 MOUSE/RAT ADIPONECTIN HMW ELISA
 HUMAN AFAMIN ELISA
 HUMAN ANGIOPOIETIN-LIKE PROTEIN 3 ELISA
 MOUSE/RAT ANGIOPOIETIN-LIKE PROTEIN 3 ELISA
 HUMAN ANGIOPOIETIN-LIKE PROTEIN 4 ELISA
 HUMAN ANGIOPOIETIN-LIKE PROTEIN 6 ELISA
 HUMAN APOLIPOPROTEIN M ELISA
 HUMAN APOPTOSIS INHIBITOR OF MACROPHAGE ELISA

B HUMAN BETATROPHIN ELISA
 MOUSE BETATROPHIN ELISA

C HUMAN CTRP1 ELISA
 HUMAN CTRP5 ELISA
 HUMAN CTRP9 ELISA
 HUMAN CHEMERIN ELISA

D HUMAN DECORIN ELISA
 HUMAN DsbA-L ELISA

E HUMAN ENPP1 ELISA

F HUMAN FETUIN-B ELISA
 HUMAN FIBROBLAST GROWTH FACTOR-19 ELISA
 HUMAN FIBROBLAST GROWTH FACTOR-21 ELISA
 MOUSE/RAT FIBROBLAST GROWTH FACTOR-21 ELISA

G CANINE GHRELIN ACYLATED EASY SAMPLING ELISA
 HUMAN GHRELIN ACYLATED ELISA
 PORCINE GHRELIN ACYLATED ELISA
 HUMAN GHRELIN EASY SAMPLING ELISA
 MOUSE/RAT GHRELIN EASY SAMPLING ELISA
 RAT GHRELIN ACYLATED ELISA
 HUMAN GHRELIN UNACYLATED EASY SAMPLING ELISA
 HUMAN GHRELIN UNACYLATED ELISA
 PORCINE GHRELIN UNACYLATED ELISA
 RAT GHRELIN UNACYLATED ELISA
 HUMAN GLUCAGON-LIKE PEPTIDE-1 ELISA (MULTISPECIES SPECIFICITY)
 HUMAN GRP-78 ELISA

H HUMAN **HEART FABP (FABP3) ELISA (IVD CE)**

I HUMAN IL-1RACP / IL-1R3 ELISA
 CANINE INSULIN ELISA
 HAMSTER INSULIN STANDARD ELISA
 HUMAN INSULIN ELISA
 HUMAN INSULIN ELISA (MULTISPECIES SPECIFICITY)
 MOUSE/RAT INSULIN ELISA
 MOUSE INSULIN ELISA, HIGH SENSITIVE
 MOUSE INSULIN ELISA, ULTRA SENSITIVE
 MOUSE INSULIN ELISA, WIDE RANGE

	MOUSE	INSULIN (S-TYPE) ELISA
	PORCINE	INSULIN ELISA
	RAT	INSULIN ELISA
	RAT	INSULIN ELISA, HIGH SENSITIVE
	RAT	INSULIN ELISA, ULTRA SENSITIVE
	RAT	INSULIN ELISA, WIDE RANGE
	HUMAN	INTERLEUKIN-6 ELISA (IVD CE)
	MONKEY	INTERLEUKIN-6 ELISA
	MOUSE	INTERLEUKIN-6 ELISA
	PORCINE	INTERLEUKIN-6 ELISA
	RAT	INTERLEUKIN-6 ELISA
	HUMAN	INTERLEUKIN-33 ELISA
		IRISIN ELISA
L	HUMAN	LECT2 ELISA
	HUMAN	LEPTIN ELISA (IVD CE)
	HUMAN	LEPTIN RECEPTOR ELISA
	MOUSE/RAT	LEPTIN ELISA
	HUMAN	LIPOCALIN-2/NGAL ELISA
M	HUMAN	MONOCYTE CHEMOTACTIC PROTEIN-1 ELISA
	MOUSE	MONOCYTE CHEMOTACTIC PROTEIN-1 ELISA
O	MOUSE/RAT	OBESTATIN ELISA
	HUMAN	OMENTIN-1 ELISA
	HUMAN	OSTEOPONTIN ELISA
P	HUMAN	PARAOXONASE 1 ELISA
	HUMAN	PCSK9 ELISA (IVD CE)
	HUMAN	PEDF ELISA
	HUMAN	PREF-1 ELISA
	HUMAN	PROGRANULIN ELISA
	MOUSE	PROGRANULIN ELISA
	RAT	PROGRANULIN ELISA
	HUMAN	PROINSULIN INTACT ELISA (IVD CE)
	HUMAN	PYY ELISA
	RAT	PYY ELISA
R	HUMAN	RBP4 ELISA
	HUMAN	RBP4 ELISA, HIGH SENSITIVITY
	MOUSE/RAT	RBP4 ELISA
	HUMAN	RESISTIN ELISA (IVD CE)
	RAT	RESISTIN ELISA
S	HUMAN	SYNUCLEIN GAMMA ELISA
T	HUMAN	TNF-ALPHA ELISA
	HUMAN	TNF-ALPHA ELISA, HIGH SENSITIVITY
	HUMAN	TNF-ALPHA TOTAL ELISA
	MONKEY	TNF-ALPHA ELISA
	MOUSE	TNF-ALPHA ELISA
	PORCINE	TNF-ALPHA ELISA
	RAT	TNF-ALPHA ELISA
V	HUMAN	VASPIN ELISA
	HUMAN	VISFATIN (NAMPT) (INTRACELLULAR) ELISA
	HUMAN	VISFATIN (NAMPT) ELISA
	MOUSE/RAT	VISFATIN (NAMPT) ELISA
Z	HUMAN	ZINC-ALPHA-2-GLYCOPROTEIN ELISA

GROWTH HORMONE AND FACTOR-RELATED PRODUCTS

A	HUMAN	ALS ELISA
G	HUMAN	GROWTH HORMONE ELISA
	HUMAN	GROWTH HORMONE SENSITIVE ELISA (IVD CE)
	RAT	GROWTH HORMONE ELISA
	RAT	GROWTH HORMONE (GH) ELISA
I	HUMAN	IGF-1 ELISA
	HUMAN	IGF-1 ELISA (IVD CE)
	MOUSE/RAT	IGF-1 ELISA
	HUMAN	IGF-2 ELISA (IVD CE)
	HUMAN	IGFBP-1 ELISA (IVD CE)
	HUMAN	IGFBP-2 ELISA
	MOUSE/RAT	IGFBP-2 ELISA
	HUMAN	IGFBP-3 FUNCTIONAL ELISA
	HUMAN	IGFBP-3 TOTAL ELISA (IVD CE)
	MOUSE/RAT	IGFBP-3 ELISA

IMMUNE RESPONSE, INFECTION AND INFLAMMATION

	HUMAN	s90K/Mac-2BP ELISA
A	HUMAN	ALPHA-1-ANTITRYPSIN IN STOOL ELISA (IVD CE)
	RAT	ALPHA-1 ACIDIC-GLYCOPROTEIN ELISA
	HUMAN	APOLIPOPROTEIN M ELISA
	HUMAN	APOPTOSIS INHIBITOR OF MACROPHAGE ELISA
	HUMAN	ANNEXIN A1 ELISA
	HUMAN	ANTI-ALPHA-GALACTOSYL IgA ELISA
	HUMAN	ANTI-ALPHA-GALACTOSYL IgE ELISA
	HUMAN	ANTI-ALPHA-GALACTOSYL IgG ELISA
	HUMAN	ANTI-ALPHA-GALACTOSYL IgM ELISA
	HUMAN	ANTI-IFN-ALPHA ELISA
	HUMAN	ANTI-IgA IgG ELISA
	RAT	ANTI-KLH IgG ELISA
	RAT	ANTI-KLH IgM ELISA
	HUMAN	AZUROCIDIN/HBP ELISA
C	MOUSE	CASPASE-1 ELISA
	HUMAN	CASPASE-9 ELISA
	HUMAN	sCD44STD ELISA
	HUMAN	CHI3L1 (YK-40) ELISA
	HUMAN	CHITINASE 3-LIKE 1 ELISA
	HUMAN	CLUB CELL PROTEIN (CC16) ELISA (IVD CE)
	HUMAN	CORTICOSTEROID-BINDING GLOBULIN ELISA
	CANINE	C-REACTIVE PROTEIN ELISA, HIGH SENSITIVITY
	HUMAN	C-REACTIVE PROTEIN ELISA (IVD CE)
	HUMAN	C-REACTIVE PROTEIN ELISA, HIGH SENSITIVITY (IVD CE)
	MOUSE	C-REACTIVE PROTEIN ELISA, HIGH SENSITIVITY
	RAT	C-REACTIVE PROTEIN ELISA, HIGH SENSITIVITY
	HUMAN	CYCLOPHILIN A ELISA
	HUMAN	CYTOCHROME C ELISA
E	MOUSE	EOTAXIN ELISA
	HUMAN	sE-SELECTIN ELISA
	MONKEY	sE-SELECTIN ELISA
F	HUMAN	FETUIN-B ELISA
	HUMAN	FOLLISTATIN ELISA

G	HUMAN HUMAN HUMAN HUMAN HUMAN HUMAN	GALECTIN-1 ELISA GALECTIN-3 ELISA GASTROKINE-1 ELISA GRANULYSIN ELISA GRANZYME B ELISA HAPTOGLOBIN ELISA
I	HUMAN HUMAN HUMAN HUMAN HUMAN MOUSE	IL-1RACP / IL-1R3 ELISA IMMUNOGLOBULIN A (SECRETORY) IN STOOL ELISA (IVD CE) INTERLEUKIN-1 BETA ELISA INTERLEUKIN-8 ELISA IP-10 ELISA IP-10 ELISA
K	HUMAN	KL-6 ELISA
L	HUMAN	LACTOFERRIN ELISA
M	HUMAN HUMAN HUMAN HUMAN	MATRIX METALLOPROTEINASE-7 (MMP-7) ELISA MATRIX METALLOPROTEINASE-8 ELISA MPO ELISA MxA PROTEIN ELISA
O	HUMAN	OSTEOPONTIN ELISA
P	HUMAN HUMAN CANINE HUMAN HUMAN MOUSE	PENTRAXIN 3 ELISA (IVD CE) PMN ELASTASE ELISA (IVD CE) PROCALCITONIN ELISA PROCALCITONIN ELISA (IVD CE) PROTEINASE 3 (PR3) ELISA PROTEINASE 3 (PR3) ELISA
S	HUMAN HUMAN HUMAN HUMAN HUMAN HUMAN HUMAN HUMAN HUMAN HUMAN HUMAN	S100A8 ELISA S100A8/A9 ELISA S100A8/A9 ELISA S100A12 ELISA SECRETOGLOBIN 3A2 ELISA SECRETORY IgA ELISA SERGLYCIN ELISA suPAR ELISA SURFACTANT PROTEIN A ELISA SURFACTANT PROTEIN D ELISA (IVD CE)

IMMUNOLOGY

A	HUMAN HUMAN HUMAN HUMAN	ANTI-ALPHA-GALACTOSYL IgA ELISA ANTI-ALPHA-GALACTOSYL IgE ELISA ANTI-ALPHA-GALACTOSYL IgG ELISA ANTI-ALPHA-GALACTOSYL IgM ELISA
C	HUMAN	CYCLOPHILIN B ELISA
I	HUMAN	INTERLEUKIN-1 BETA ELISA

INFLAMMATORY BOWEL DISEASE

L	HUMAN	LACTOFERRIN ELISA
----------	-------	-------------------

S	HUMAN HUMAN	S100A8/A9 ELISA S100A12 ELISA
----------	----------------	----------------------------------

IRON METABOLISM

F	HUMAN RAT	FERRITIN ELISA FERRITIN ELISA
L	HUMAN	LACTOFERRIN ELISA
T	HUMAN RAT	sTfR ELISA (IVD CE) TRANSFERRIN ELISA

LIPOPROTEIN METABOLISM

A	HUMAN HUMAN	APOLIPOPROTEIN B-48 ELISA APOLIPOPROTEIN M ELISA
B	HUMAN MOUSE	BETATROPHIN ELISA BETATROPHIN ELISA
I	HUMAN	INSL5/INSL7 HYBRID
L	HUMAN	LECITHIN-CHOLESTEROL ACYLTRANSFERASE ELISA
P	HUMAN HUMAN HUMAN	PAF-AH PARAOXONASE 1 ELISA PCSK9 ELISA (IVD CE)
R	HUMAN	RELAXIN-3
S	HUMAN	S100A12 ELISA
T	HUMAN	TNF- β (<i>E.coli</i> -derived)

MUSCLE GROWTH CONTROL

F	HUMAN	FOLLISTATIN ELISA
----------	-------	-------------------

NEURAL TISSUE DAMAGE MARKERS

C	CANINE HUMAN RAT HUMAN CANINE HUMAN MOUSE RAT	CANINE CLUSTERIN ELISA CLUSTERIN ELISA CLUSTERIN ELISA CYCLOPHILIN 40 ELISA CYSTATIN C ELISA CYSTATIN C ELISA (IVD CE) CYSTATIN C ELISA CYSTATIN C ELISA
G	HUMAN	GLIAL FIBRILLARY ACIDIC PROTEIN ELISA
H	HUMAN	HAPTOGLOBIN ELISA
M	HUMAN	MATRIX METALLOPROTEINASE-9 (MMP-9) ELISA
N	HUMAN HUMAN	NEUROSERPIN ELISA NSE ELISA

IMMUNOASSAYS INDEX

O	HUMAN	OSTEOPONTIN ELISA
P	HUMAN	PHOSPHORYLATED NEUROFILAMENT H ELISA
	HUMAN	PROGRANULIN ELISA
	MOUSE	PROGRANULIN ELISA
	RAT	PROGRANULIN ELISA
	HUMAN	PROSTAGLANDIN D SYNTHASE (LIPOCALIN-TYPE) ELISA

S	HUMAN	S100A12 ELISA
	HUMAN	S100B ELISA
	HUMAN	SECRETAGOGIN ELISA
	HUMAN	SYNUCLEIN GAMMA ELISA

V	HUMAN	VILIP-1 ELISA
----------	-------	---------------

ONCOLOGY

	HUMAN	s90K/MAC-2BP ELISA
--	-------	--------------------

A	HUMAN	ALPHA-FETOPROTEIN ELISA
	RAT	ALPHA-1 ACIDIC-GLYCOPROTEIN ELISA
	HUMAN	ANNEXIN A1 ELISA
	HUMAN	ANTI-ALPHA-GALACTOSYL IgA ELISA
	HUMAN	ANTI-ALPHA-GALACTOSYL IgE ELISA
	HUMAN	ANTI-ALPHA-GALACTOSYL IgG ELISA
	HUMAN	ANTI-ALPHA-GALACTOSYL IgM ELISA

C	HUMAN	CALCITONIN (CT) ELISA, HIGH SENSITIVITY
		CALRETININ ELISA
	HUMAN	sCD30 ELISA
	HUMAN	sCD40 ELISA
	MOUSE	sCD40L ELISA
	HUMAN	sCD44STD ELISA
	HUMAN	sCD44VAR (V5) ELISA
	HUMAN	sCD44VAR (V6) ELISA
	HUMAN	CHROMOGRANIN A ELISA
	HUMAN	CHROMOGRANIN A ELISA
	HUMAN	CYCLOPHILIN 40 ELISA
	HUMAN	CYCLOPHILIN A ELISA
	HUMAN	CYCLOPHILIN B ELISA
	HUMAN	CYSTATIN B ELISA

D	HUMAN	DECORIN ELISA
	HUMAN	DICKKOPF-RELATED PROTEIN 1 ELISA

E	HUMAN	ENDOCAN ELISA
	HUMAN	EPIDIDYMIS PROTEIN 4 (HE4) ELISA

F	HUMAN	FETUIN-B ELISA
	HUMAN	FIBRONECTIN ELISA
	HUMAN	FOLLISTATIN ELISA

G	HUMAN	GALECTIN-1 ELISA
	HUMAN	GASTROKINE-1 ELISA
	HUMAN	GDF-15/MIC-1 ELISA (IVD CE)
	HUMAN	GRANULYSIN ELISA

H	HUMAN	sHER-2 ELISA
----------	-------	--------------

I	HUMAN	IGFBP-7 ELISA
	HUMAN	IL-1RACP / IL-1R3 ELISA
	HUMAN	ILEAL FABP (FABP6) ELISA
	HUMAN	IMMUNOGLOBULIN FREE LIGHT CHAINS ELISA
	HUMAN	INTERLEUKIN-1 BETA ELISA
	HUMAN	INTERLEUKIN-8 ELISA
	HUMAN	INTERLEUKIN-33 ELISA

L	HUMAN	LECT2 ELISA
----------	-------	-------------

M	HUMAN	MACROPHAGE MIGRATION INHIBITORY FACTOR ELISA
	HUMAN	MATRIX METALLOPROTEINASE-7 (MMP-7) ELISA
	HUMAN	MATRIX METALLOPROTEINASE-8 ELISA
	HUMAN	MATRIX METALLOPROTEINASE-9 (MMP-9) ELISA
	HUMAN	MIDKINE ELISA

N	HUMAN	NEURON SPECIFIC ENOLASE ELISA
	HUMAN	NEUROSERPIN ELISA
	HUMAN	NSE ELISA

O	HUMAN	OSTEOPONTIN ELISA
----------	-------	-------------------

P	HUMAN	p53 ELISA
	HUMAN	PLACENTAL GROWTH FACTOR ELISA
	HUMAN	PREF-1 ELISA
	HUMAN	PHOSPHORYLATED NEUROFILAMENT H ELISA
	HUMAN	PROLACTIN-INDUCIBLE PROTEIN ELISA
	HUMAN	PROSTATE SECRETORY PROTEIN 94 ELISA
	HUMAN	PROTEINASE 3 (PR3) ELISA
	MOUSE	PROTEINASE 3 (PR3) ELISA
	HUMAN	PYRUVATE KINASE M2 ELISA

S	HUMAN	S100A8 ELISA
	HUMAN	S100A12 ELISA
	HUMAN	SECRETAGOGIN ELISA
	HUMAN	SECRETOGLOBIN 3A2 ELISA
	HUMAN	SERGLYCIN ELISA
	HUMAN	STANNIOCALCIN 1 ELISA
	HUMAN	SYNDECAN-1 (CD138) ELISA
	MOUSE	SYNDECAN-1 (CD138) ELISA
	HUMAN	SYNUCLEIN GAMMA ELISA
		TM-CYFRA 21-1 ELISA

T	HUMAN	TRAIL ELISA
----------	-------	-------------

V	HUMAN	VILIP-1 ELISA
----------	-------	---------------

Z	HUMAN	ZINC-ALPHA-2-GLYCOPROTEIN ELISA
----------	-------	---------------------------------

OTHERS

A		ALPHA-AMYLASE SALIVA ELISA
----------	--	----------------------------

C	HUMAN	CATHEPSIN L ELISA
	CANINE	CLUSTERIN ELISA
	HUMAN	CLUSTERIN ELISA
	RAT	CLUSTERIN ELISA
	HUMAN	CGRP EIA KIT
	RAT	CGRP EIA KIT
		CRGP AFFINITY SORBENT
		CYSTICERCOSIS AG ELISA

IMMUNOASSAYS INDEX

H	MULTISPECIES	HISTAMINE ELISA
	HUMAN	HUMANIN ELISA, HIGH SENSITIVITY
I	HUMAN	INTESTINAL FABP (FABP2) ELISA
M	HUMAN	MATRIX METALLOPROTEINASE-7 (MMP-7) ELISA
	HUMAN	MATRIX METALLOPROTEINASE-8 ELISA
	HUMAN	MATRIX METALLOPROTEINASE-9 ELISA
	HUMAN	MATRIX METALLOPROTEINASE-9 (MMP-9) ELISA
P	HUMAN	PAI-1 ELISA
	HUMAN	PARAOXONASE 1 ELISA
	HUMAN	PEDF ELISA
	HUMAN	PEPSINOGEN I ELISA
	HUMAN	PEPSINOGEN II ELISA
	HUMAN	PROUROGUANYLIN ELISA
S	HUMAN	S100A8/A9 ELISA
	HUMAN	S100A8/A9 ELISA
	HUMAN	S100A11 ELISA (MULTISPECIES SPECIFICITY)
	HUMAN	S100G ELISA
T	HUMAN	THYROXINE, FREE (FT4) ELISA
	HUMAN	THYROXINE, TOTAL (T4) ELISA
	HUMAN	TIMP-1 ELISA
	HUMAN	TRIIODOTHYRONINE, FREE (FT3) ELISA
	HUMAN	TRIIODOTHYRONINE, TOTAL (T3) ELISA
	HUMAN	REVERSE T3 (RT3) ELISA
Z	HUMAN	t-PA ELISA
	HUMAN	ZYMOGEN GRANULE MEMBRANE PROTEIN 16 ELISA

OXIDATIVE STRESS

	HUMAN	8-OHdG CHECK ELISA (MULTISPECIES SPECIFICITY)
	HUMAN	8-OHdG CHECK (ULTRASENSITIVE) ELISA (MULTISPECIES SPECIFICITY)
C	HUMAN	Cu/Zn SUPEROXIDE DISMUTASE ELISA
	HUMAN	CYTOCHROME c ELISA
D		DHN-MA ELISA
G	HUMAN	GLUTATHIONE PEROXIDASE 1 ELISA
H	HUMAN	HAPTOGLOBIN ELISA
P	HUMAN	PEROXIREDOXIN 1 ELISA
	HUMAN	PEROXIREDOXIN 3 ELISA
S	HUMAN	SUPEROXIDE DISMUTASE 1 ELISA
	HUMAN	SUPEROXIDE DISMUTASE 2 ELISA
	HUMAN	SUPEROXIDE DISMUTASE 3 ELISA
T	HUMAN	THIOREDOXIN 1 ELISA
	HUMAN	THIOREDOXIN REDUCTASE 1 ELISA

PULMONARY DISEASE

C	HUMAN	CONNECTIVE TISSUE GROWTH FACTOR ELISA
	HUMAN	CLUB CELL PROTEIN (CC16) ELISA (IVD CE)
K	HUMAN	KL-6 ELISA
M	HUMAN	MATRIX METALLOPROTEINASE-7 ELISA
	HUMAN	MATRIX METALLOPROTEINASE-8 ELISA
	HUMAN	MATRIX METALLOPROTEINASE-9 ELISA
P	HUMAN	PMN ELASTASE ELISA
S	HUMAN	S100A8 ELISA
	HUMAN	S100A12 ELISA
	HUMAN	SECRETOGLOBIN 3A2 ELISA
	HUMAN	SOLUBLE RECEPTOR OF ADVANCED GLYCATION END-PRODUCTS (SRAGE) ELISA
	HUMAN	SURFACTANT PROTEIN A ELISA
	HUMAN	SURFACTANT PROTEIN D ELISA

RENAL DISEASE

A	BOVINE	ALBUMIN ELISA
	MOUSE	ALBUMIN ELISA
	RAT	ALBUMIN ELISA
	RAT	ALBUMIN, HIGH SENSITIVITY ELISA
	MOUSE	ALBUMIN URINARY (S-TYPE) ASSAY
	RAT	ALBUMIN URINARY (S-TYPE) ASSAY
	HUMAN	ANGIOTENSINOGEN ELISA
	HUMAN/RAT	ANGIOTENSIN II ELISA
	HUMAN	APOPTOSIS INHIBITOR OF MACROPHAGE ELISA
	B	HUMAN
RAT		BETA2-MICROGLOBULIN ELISA
C	CANINE	CLUSTERIN ELISA
	HUMAN	CLUSTERIN ELISA
	RAT	CLUSTERIN ELISA
	CANINE	CYSTATIN C ELISA
	HUMAN	CYSTATIN C ELISA (IVD CE)
	MOUSE	CYSTATIN C ELISA
E	RAT	CYSTATIN C ELISA
	HUMAN	ERYTHROPOIETIN ELISA
F	HUMAN	FETUIN-A (AHSG) ELISA (IVD CE)
H	HUMAN	HAPTOGLOBIN ELISA
	HUMAN	HEART FABP (FABP3) ELISA (IVD CE)
I	HUMAN	IGFBP-7 ELISA ELISA
L	HUMAN	LIPOCALIN-2/NGAL ELISA
N	HUMAN	NT-proBNP ELISA
O	HUMAN	OSTEOPONTIN ELISA
P	HUMAN	PLACENTAL GROWTH FACTOR ELISA

IMMUNOASSAYS INDEX

HUMAN PRORENIN ELISA
 HUMAN TOTAL PRORENIN/RENIN ELISA
 HUMAN PROSTAGLANDIN D SYNTHASE (LIPOCALIN-TYPE) ELISA
 HUMAN PROUROGUANYLIN ELISA

R HUMAN ACTIVE RENIN ELISA
 HUMAN RENIN ELISA
 HUMAN sRAGE ELISA

S HUMAN S100A12 ELISA
 HUMAN suPAR ELISA

U CANINE UROMODULIN ELISA
 HUMAN **UROMODULIN ELISA (IVD CE)**

RAT CLUSTERIN ELISA
 CANINE C-REACTIVE PROTEIN ELISA, HIGH SENSITIVITY
 HUMAN **C-REACTIVE PROTEIN ELISA, HIGH SENSITIVITY (IVD CE)**
 HUMAN **C-REACTIVE PROTEIN ELISA (IVD CE)**
 MOUSE C-REACTIVE PROTEIN ELISA, HIGH SENSITIVITY
 RAT C-REACTIVE PROTEIN ELISA, HIGH SENSITIVITY

E HUMAN ENDOCAN ELISA

I HUMAN INTERLEUKIN-1 BETA ELISA
 HUMAN INTERLEUKIN-8 ELISA

M HUMAN MxA PROTEIN ELISA

N HUMAN **NT-proANP ELISA (IVD CE)**

P CANINE PROCALCITONIN ELISA
 HUMAN **PROCALCITONIN ELISA (IVD CE)**

S HUMAN S100A8 ELISA

REPRODUCTION

E HUMAN ENDOCAN ELISA

F HUMAN FOLLISTATIN ELISA
 HUMAN FSH ELISA

G HUMAN **GDF-15/MIC-1 ELISA (IVD CE)**
 sHLA-G ELISA
 HUMAN CHORIONIC GONADOTROPIN (HCG) ELISA
 HUMAN BETA-CHORIONIC GONADOTROPIN (BETA-HCG), FREE ELISA

I HUMAN IL-1RAC1 / IL-1R3 ELISA
 HUMAN ILEAL FABP (FABP6) ELISA

L HUMAN **LEPTIN ELISA (IVD CE)**
 HUMAN LEPTIN RECEPTOR ELISA
 MOUSE/RAT LEPTIN ELISA
 HUMAN LH ELISA
 RAT LH ELISA (S-TYPE) ELISA, HIGH SENSITIVITY

M HUMAN MICA ELISA

O HUMAN OMENTIN-1 ELISA

P HUMAN PLACENTAL GROWTH FACTOR ELISA
 HUMAN PLACENTAL LACTOGEN ELISA
 HUMAN PLACENTAL PROTEIN 13 ELISA
 HUMAN PROLACTIN-INDUCIBLE PROTEIN ELISA
 HUMAN PROSTATE SECRETORY PROTEIN 94 ELISA

S HUMAN SEX HORMONE BINDING GLOBULIN ELISA
 HUMAN SPERM-ANTIBODY ELISA
 HUMAN STANNIOCALCIN 1 ELISA
 HUMAN SURFACTANT PROTEIN A ELISA

V HUMAN VASPIN ELISA

SEPSIS

A HUMAN AZUROCIDIN/HBP ELISA

C CANINE CLUSTERIN ELISA
 HUMAN CLUSTERIN ELISA

STEROID HORMONES

5 α -ANDROSTANE-3 α ,17 β -DIOL GLUCURONIDE ELISA

17 α -HYDROXYPROGESTERONE ELISA
 17 α -HYDROXYPROGESTERONE FREE IN SALIVA ELISA

A ALDOSTERONE ELISA
 ANDROSTENEDIONE ELISA
 ANDROSTENEDIONE FREE IN SALIVA ELISA

C HUMAN CORTICOSTEROID-BINDING GLOBULIN ELISA
 MOUSE/RAT CORTICOSTERONE ELISA
 HUMAN CORTISOL (SALIVA) ELISA
 CORTISOL ELISA

D DEHYDROEPIANDROSTERONE ELISA
 DEHYDROEPIANDROSTERONE SULFATE ELISA
 DEHYDROEPIANDROSTERONE FREE IN SALIVA ELISA
 DIHYDROTTESTOSTERONE ELISA

E ESTRADIOL ELISA
 ESTRADIOL FREE IN SALIVA ELISA
 ESTRIOL FREE IN SALIVA ELISA
 HUMAN ESTRIOL, FREE ELISA
 ESTRONE ELISA
 ESTRONE FREE IN SALIVA ELISA

P PREGNENOLONE ELISA
 PROGESTERONE ELISA
 PROGESTERONE FREE IN SALIVA ELISA
 MOUSE/RAT PROGESTERONE ELISA

Q RAT QUALITY CONTROL SET (CORTICOSTERONE, PROLACTIN, TESTOSTERONE, TSH)

S HUMAN SEX HORMONE BINDING GLOBULIN ELISA

T TESTOSTERONE ELISA

HUMAN TESTOSTERONE FREE IN SALIVA ELISA
HUMAN FREE TESTOSTERONE ELISA
MOUSE/RAT TESTOSTERONE ELISA

TRANSPLANTATION

A HUMAN ANTI-ALPHA-GALACTOSYL IgG ELISA
HUMAN ANTI-ALPHA-GALACTOSYL IgM ELISA
HUMAN **ANTI-IgA ISOTYPE IgG ELISA (IVD CE)**

C HUMAN sCD40L ELISA
MOUSE sCD40L ELISA
HUMAN sCD137/4-1BB ELISA
HUMAN sCD152/CTLA-4 ELISA

E HUMAN sE-SELECTIN ELISA
MONKEY sE-SELECTIN ELISA

F HUMAN FIBRONECTIN ELISA

G HUMAN GRANULYSIN ELISA
HUMAN GRANZYME B ELISA

Antibodies

► **MONOCLONAL ANTIBODIES**

Monoclonal antibodies are prepared using hybridoma technology, fusing the spleen cells of immunized mice with the cells of the mouse myeloma Sp2/0 cell line. The resultant hybridoma cells are selected according to their ability to produce antibodies of the required specificity. The hybridoma cells producing the highest quality antibodies are then cloned and cultivated.

Monoclonal antibodies are protein-G or protein-A purified.

► **POLYCLONAL ANTIBODIES**

Polyclonal antibodies are prepared by immunizing experimental animals using optimized immunization protocols. Sera from immunized rabbits, goats, cows or sheep or the yolk from chicken eggs provide the source of specific antibodies. The host animal species is specified in the corresponding product name subtitle.

Polyclonal antibodies are affinity purified on immunizing antigen-immobilized columns.

ANTIBODIES INDEX

ANIMAL STUDIES

A	MURINE	ADIPONECTIN (HEK), RABBIT PAb
	PORCINE	ADIPONECTIN (HEK), RABBIT PAb
	PORCINE	ADIPONECTIN (HEK), SHEEP PAb
C	CANINE	CLUSTERIN, RABBIT PAb
	RAT	CLUSTERIN, RABBIT PAb
	CANINE	CLUSTERIN, SHEEP PAb
	CANINE	CYSTATIN C, RABBIT PAb
	MOUSE	CYSTATIN C, RABBIT PAb
	CANINE	CYSTATIN C, SHEEP PAb
	MOUSE	CYSTATIN C, SHEEP PAb
RAT	CYSTATIN C, SHEEP PAb	
F	MOUSE	FIBROBLAST GROWTH FACTOR 21, RABBIT PAb
L	MOUSE	LEPTIN, RABBIT PAb
	RAT	LEPTIN, RABBIT PAb
R	RAT	RESISTIN, RABBIT PAb

APOPTOSIS

A	HUMAN	ANNEXIN A1, RABBIT PAb
	HUMAN	ANNEXIN A1, SHEEP PAb

AUTOIMMUNITY

A	HUMAN	ANNEXIN A1, RABBIT PAb
	HUMAN	ANNEXIN A1, SHEEP PAb
G	HUMAN	GLUCOSE-REGULATED PROTEIN 78, SHEEP PAb

BLOOD PRESSURE REGULATION AND NO METABOLISM

A	HUMAN	ARGINASE-I (LIVER TYPE), MOUSE MAb, Clone: 6G3
----------	-------	--

BONE AND CARTILAGE METABOLISM

C	HUMAN	CATHEPSIN K, MOUSE MAb, Clone: 3F9
	HUMAN	COMP, MOUSE MAb, Clone: 12C4
	HUMAN	COMP, MOUSE MAb, Clone: 16F12
	HUMAN	COMP, MOUSE MAb, Clone: 17C10
E	HUMAN	ENPP1 (HEK), RABBIT PAb
	HUMAN	ENPP1 (HEK), SHEEP PAb
F	HUMAN	FETUIN-A (AHSG), GOAT PAb
	HUMAN	FETUIN-A (AHSG), RABBIT PAb
	HUMAN	FETUIN-B (HEK), RABBIT PAb
	HUMAN	FETUIN-B (HEK), SHEEP PAb
	HUMAN	FOLLISTATIN, SHEEP PAb
O	HUMAN	OSTEOACTIVIN/GPNMB (HEK), RABBIT PAb
	HUMAN	OSTEOACTIVIN/GPNMB (HEK), SHEEP PAb
	HUMAN	OSTEOBLAST SPECIFIC FACTOR 1, RABBIT PAb
	HUMAN	OSTEOBLAST SPECIFIC FACTOR 1, SHEEP PAb

HUMAN	OSTEOBLAST SPECIFIC FACTOR 2, RABBIT PAb
HUMAN	OSTEOBLAST SPECIFIC FACTOR 2, SHEEP PAb
HUMAN	OSTEOCRIN, RABBIT PAb
HUMAN	OSTEOPROTEGERIN, MOUSE MAb, Clone: OPG-01
HUMAN	OSTEOPROTEGERIN, MOUSE MAb, Clone: OPG-13

P	HUMAN	PROCATHEPSIN K, MOUSE MAb, Clone: 4B9
	HUMAN	PROCATHEPSIN K, RABBIT PAb

R	HUMAN	REGUCALCIN, RABBIT PAb
	HUMAN	REGUCALCIN, SHEEP PAb

S	HUMAN	SRANK (SOLUBLE RANK RECEPTOR), RABBIT PAb
	HUMAN	STANNIOCALCIN 1, RABBIT PAb
	HUMAN	STANNIOCALCIN 2, RABBIT PAb
	HUMAN	STANNIOCALCIN 2, SHEEP PAb

T	HUMAN	TRAP 5, MOUSE MAb, Clone: TRAP-01
----------	-------	-----------------------------------

CARDIOVASCULAR DISEASE

A	HUMAN	ALLOGRAFT INFLAMMATORY FACTOR 1, SHEEP PAb
	HUMAN	APOPTOSIS INHIBITOR OF MACROPHAGE, SHEEP PAb

C	HUMAN	CARDIOTROPHIN-1, MOUSE MAb, Clone: 1F3
	HUMAN	CARDIOTROPHIN-1, MOUSE MAb, Clone: 3G6D9
	HUMAN	CARDIOTROPHIN-1, RABBIT PAb

D	HUMAN	DECORIN, RABBIT PAb
	HUMAN	DECORIN, SHEEP PAb

E	HUMAN	EPIDERMAL FABP, RABBIT PAb
	HUMAN	EPIDERMAL FABP, SHEEP PAb

F	HUMAN	FETUIN-A (AHSG), GOAT PAb
	HUMAN	FETUIN-A (AHSG), RABBIT PAb

G	HUMAN	GLUCOSE-REGULATED PROTEIN 78, SHEEP PAb
----------	-------	---

I	HUMAN	INTERLEUKIN-33, RABBIT PAb
	HUMAN	INTERLEUKIN-33, SHEEP PAb

M	HUMAN	MYOSIN (CARDIAC) LIGHT CHAIN, RABBIT PAb
----------	-------	--

O	HUMAN	OSTEOBLAST SPECIFIC FACTOR 2, RABBIT PAb
	HUMAN	OSTEOBLAST SPECIFIC FACTOR 2, SHEEP PAb

P	HUMAN	PARAOXONASE 1, SHEEP PAb
----------	-------	--------------------------

S	HUMAN	S100A10, SHEEP PAb
	HUMAN	S100A11, SHEEP PAb
	HUMAN	S100A13, SHEEP PAb
	HUMAN	S100G, SHEEP PAb
	HUMAN	S100P, RABBIT PAb
	HUMAN	S100P, SHEEP PAb

CORONARY ARTERY DISEASE

A	HUMAN	ADIPONECTIN (HEK), GOAT PAb
	HUMAN	ADIPONECTIN (HEK), RABBIT PAb

ANTIBODIES INDEX

MURINE ADIPONECTIN (HEK), RABBIT PAb
 PORCINE ADIPONECTIN (HEK), RABBIT PAb
 HUMAN ADIPONECTIN (HEK), SHEEP PAb
 PORCINE ADIPONECTIN (HEK), SHEEP PAb
 HUMAN ADIPONECTIN, MOUSE MAb, Clone: 5E4
 HUMAN ADIPONECTIN, MOUSE MAb, Clone: 7C11
 HUMAN ADIPONECTIN, RABBIT PAb

S HUMAN S100A9, SHEEP PAb

CYTOKINES AND CHEMOKINES AND RELATED MOLECULES

C HUMAN CXCL12, RABBIT PAb
 HUMAN CXCL12, SHEEP PAb

I HUMAN INTERLEUKIN-33, RABBIT PAb
 HUMAN INTERLEUKIN-33, SHEEP PAb

O HUMAN OSTEOSTEMOGENESIS INDUCING FACTOR 1, RABBIT PAb
 HUMAN OSTEOSTEMOGENESIS INDUCING FACTOR 1, SHEEP PAb
 HUMAN OSTEOSTEMOGENESIS INDUCING FACTOR 2, RABBIT PAb
 HUMAN OSTEOSTEMOGENESIS INDUCING FACTOR 2, SHEEP PAb

DIABETOLOGY

A HUMAN ADIPOCYTE FABP, GOAT PAb
 HUMAN ADIPOCYTE FABP, RABBIT PAb
 HUMAN ADIPONECTIN (HEK), GOAT PAb
 HUMAN ADIPONECTIN (HEK), RABBIT PAb
 MURINE ADIPONECTIN (HEK), RABBIT PAb
 PORCINE ADIPONECTIN (HEK), RABBIT PAb
 HUMAN ADIPONECTIN (HEK), SHEEP PAb
 PORCINE ADIPONECTIN (HEK), SHEEP PAb
 HUMAN ADIPONECTIN, MOUSE MAb, Clone: 5E4
 HUMAN ADIPONECTIN, MOUSE MAb, Clone: 7C11
 HUMAN ADIPONECTIN, RABBIT PAb
 HUMAN APOLIPOPROTEIN M, SHEEP PAb

E HUMAN ENPP1 (HEK), RABBIT PAb
 HUMAN ENPP1 (HEK), SHEEP PAb
 HUMAN EPIDERMAL FABP, RABBIT PAb
 HUMAN EPIDERMAL FABP, SHEEP PAb

F HUMAN FAM3B, RABBIT PAb
 HUMAN FAM3B, SHEEP PAb
 HUMAN FIBROBLAST GROWTH FACTOR 21, RABBIT PAb
 MOUSE FIBROBLAST GROWTH FACTOR 21, RABBIT PAb
 HUMAN FIBROBLAST GROWTH FACTOR 21, SHEEP PAb
 HUMAN FIBROBLAST GROWTH FACTOR 21 Tag-free, SHEEP PAb

L HUMAN LEPTIN RECEPTOR, MOUSE MAb, Clone: LPR-01
 HUMAN LEPTIN RECEPTOR, MOUSE MAb, Clone: LPR-02
 HUMAN LEPTIN, MOUSE MAb, Clone: LEP-02
 HUMAN LEPTIN, RABBIT PAb
 MOUSE LEPTIN, RABBIT PAb
 RAT LEPTIN, RABBIT PAb

O HUMAN OMENTIN-1, RABBIT PAb
 HUMAN OMENTIN-1, SHEEP PAb

R HUMAN REGENERATING PROTEIN 1 ALPHA, RABBIT PAb
 HUMAN RESISTIN, GOAT PAb
 HUMAN RESISTIN, RABBIT PAb
 RAT RESISTIN, RABBIT PAb

S HUMAN SECRETAGOGIN, RABBIT PAb
 RAT SECRETAGOGIN, RABBIT PAb
 HUMAN SECRETAGOGIN, SHEEP PAb
 HUMAN sRAGE, SHEEP PAb

ENERGY METABOLISM AND BODY WEIGHT REGULATION

A HUMAN ACYLATION STIMULATING PROTEIN, MOUSE MAb, Clone: 4H3
 HUMAN ADIPOCYTE FABP, GOAT PAb
 HUMAN ADIPOCYTE FABP, RABBIT PAb
 HUMAN ADIPONECTIN (HEK), GOAT PAb
 HUMAN ADIPONECTIN (HEK), RABBIT PAb
 MURINE ADIPONECTIN (HEK), RABBIT PAb
 PORCINE ADIPONECTIN (HEK), RABBIT PAb
 HUMAN ADIPONECTIN (HEK), SHEEP PAb
 PORCINE ADIPONECTIN (HEK), SHEEP PAb
 HUMAN ADIPONECTIN, MOUSE MAb, Clone: 5E4
 HUMAN ADIPONECTIN, MOUSE MAb, Clone: 7C11
 HUMAN ADIPONECTIN, RABBIT PAb
 HUMAN ADIPOPILIN, RABBIT PAb
 HUMAN ADIPOPILIN, SHEEP PAb
 HUMAN AGOUTI-RELATED PROTEIN (AGRP), RABBIT PAb
 HUMAN ANGIOPOIETIN-LIKE PROTEIN 3, RABBIT PAb
 HUMAN ANGIOPOIETIN-LIKE PROTEIN 3, SHEEP PAb
 HUMAN ANGIOPOIETIN-LIKE PROTEIN 4 (HEK), SHEEP PAb
 HUMAN ANGIOPOIETIN-LIKE PROTEIN 4, RABBIT PAb
 HUMAN ANGIOPOIETIN-LIKE PROTEIN 4, SHEEP PAb
 HUMAN APOLIPOPROTEIN D, RABBIT PAb
 HUMAN APOLIPOPROTEIN D, SHEEP PAb
 HUMAN APOLIPOPROTEIN M, SHEEP PAb

D HUMAN DECORIN, RABBIT PAb
 HUMAN DECORIN, SHEEP PAb

E HUMAN ENPP1 (HEK), RABBIT PAb
 HUMAN ENPP1 (HEK), SHEEP PAb
 HUMAN EPIDERMAL FABP, RABBIT PAb
 HUMAN EPIDERMAL FABP, SHEEP PAb

F HUMAN FAM3B, RABBIT PAb
 HUMAN FAM3B, SHEEP PAb
 HUMAN FETUIN-B (HEK), RABBIT PAb
 HUMAN FETUIN-B (HEK), SHEEP PAb
 HUMAN FIBROBLAST GROWTH FACTOR 19, RABBIT PAb
 HUMAN FIBROBLAST GROWTH FACTOR 19, SHEEP PAb
 HUMAN FIBROBLAST GROWTH FACTOR 21, RABBIT PAb
 MOUSE FIBROBLAST GROWTH FACTOR 21, RABBIT PAb
 HUMAN FIBROBLAST GROWTH FACTOR 21, SHEEP PAb
 HUMAN FIBROBLAST GROWTH FACTOR 21 Tag-free, SHEEP PAb
 HUMAN FIBROBLAST GROWTH FACTOR 23, RABBIT PAb

G HUMAN GLUCOSE-REGULATED PROTEIN 78, SHEEP PAb

I HUMAN INTERLEUKIN-33, RABBIT PAb
 HUMAN INTERLEUKIN-33, SHEEP PAb

ANTIBODIES INDEX

L	HUMAN	LEPTIN RECEPTOR, MOUSE MAb, Clone: LPR-01
	HUMAN	LEPTIN RECEPTOR, MOUSE MAb, Clone: LPR-02
	HUMAN	LEPTIN, MOUSE MAb, Clone: LEP-02
	HUMAN	LEPTIN, RABBIT PAb
	MOUSE	LEPTIN, RABBIT PAb
RAT	LEPTIN, RABBIT PAb	
N	HUMAN	NESFATIN-1, SHEEP PAb
O	HUMAN	OMENTIN-1, RABBIT PAb
	HUMAN	OMENTIN-1, SHEEP PAb
P	HUMAN	PARAOXONASE 1, SHEEP PAb
	HUMAN	PIGMENT EPITHELIUM-DERIVED FACTOR, RABBIT PAb
	HUMAN	PIGMENT EPITHELIUM-DERIVED FACTOR, SHEEP PAb
R	HUMAN	RESISTIN, GOAT PAb
	HUMAN	RESISTIN, RABBIT PAb
	RAT	RESISTIN, RABBIT PAb
	HUMAN	RESISTIN-LIKE MOLECULE-BETA, RABBIT PAb
T	HUMAN	TREFOIL FACTOR 1, RABBIT PAb
	HUMAN	TREFOIL FACTOR 1, SHEEP PAb
	HUMAN	TREFOIL FACTOR 2, RABBIT PAb
	HUMAN	TREFOIL FACTOR 2, SHEEP PAb
	HUMAN	TREFOIL FACTOR 3, RABBIT PAb
HUMAN	TREFOIL FACTOR 3, SHEEP PAb	
Z	HUMAN	ZINC-ALPHA-2-GLYCOPROTEIN, RABBIT PAb
	HUMAN	ZINC-ALPHA-2-GLYCOPROTEIN, SHEEP PAb

CHRONIC RENAL FAILURE

A	HUMAN	ADIPONECTIN (HEK), GOAT PAb
	HUMAN	ADIPONECTIN (HEK), RABBIT PAb
	MURINE	ADIPONECTIN (HEK), RABBIT PAb
	PORCINE	ADIPONECTIN (HEK), RABBIT PAb
	HUMAN	ADIPONECTIN (HEK), SHEEP PAb
	PORCINE	ADIPONECTIN (HEK), SHEEP PAb
	HUMAN	ADIPONECTIN, MOUSE MAb, Clone: 5E4
	HUMAN	ADIPONECTIN, MOUSE MAb, Clone: 7C11
	HUMAN	ADIPONECTIN, RABBIT PAb

IMMUNE RESPONSE, INFECTION AND INFLAMMATION

A	HUMAN	ALLOGRAFT INFLAMMATORY FACTOR 1, SHEEP PAb
	HUMAN	ANNEXIN A1, RABBIT PAb
	HUMAN	ANNEXIN A1, SHEEP PAb
	HUMAN	APOLIPOPROTEIN M, SHEEP PAb
	HUMAN	APOPTOSIS INHIBITOR OF MACROPHAGE, SHEEP PAb
C	HUMAN	CLUB CELL PROTEIN (CC16), RABBIT PAb
	HUMAN	CXCL12, RABBIT PAb
	HUMAN	CXCL12, SHEEP PAb
F	HUMAN	FETUIN-B (HEK), RABBIT PAb
	HUMAN	FETUIN-B (HEK), SHEEP PAb
G	HUMAN	GLUCOSE-REGULATED PROTEIN 78, SHEEP PAb
	HUMAN	GRANULYSIN, RABBIT PAb

HUMAN	GRANULYSIN, SHEEP PAb
HUMAN	REGENERATING PROTEIN 1 ALPHA, RABBIT PAb

S	HUMAN	S100A6, RABBIT PAb
	HUMAN	S100A6, SHEEP PAb
	HUMAN	S100A8, SHEEP PAb
	HUMAN	S100A9, SHEEP PAb
	HUMAN	S100A11, SHEEP PAb
	HUMAN	S100A12, RABBIT PAb
HUMAN	S100A12, SHEEP PAb	

T	HUMAN	TREFOIL FACTOR 1, RABBIT PAb
	HUMAN	TREFOIL FACTOR 1, SHEEP PAb
	HUMAN	TREFOIL FACTOR 2, RABBIT PAb
	HUMAN	TREFOIL FACTOR 2, SHEEP PAb

U	HUMAN	URINARY TRYPSIN INHIBITOR, RABBIT PAb
----------	-------	---------------------------------------

IMMUNOLOGY

A	HUMAN	ARGINASE-I (LIVER TYPE), MOUSE MAb, Clone: 6G3
----------	-------	--

INFLAMMATORY BOWEL DISEASE

S	HUMAN	S100A12, RABBIT PAb
	HUMAN	S100A12, SHEEP PAb

IRON METABOLISM

S	HUMAN	STFR, MOUSE MAb, Clone: TFR-01
----------	-------	--------------------------------

LIPOPROTEIN METABOLISM

A	HUMAN	APOLIPOPROTEIN D, RABBIT PAb
	HUMAN	APOLIPOPROTEIN D, SHEEP PAb
	HUMAN	APOLIPOPROTEIN M, SHEEP PAb

P	HUMAN	PARAOXONASE 1, SHEEP PAb
----------	-------	--------------------------

S	HUMAN	S100A12, RABBIT PAb
	HUMAN	S100A12, SHEEP PAb

METABOLIC SYNDROME

A	HUMAN	APOPTOSIS INHIBITOR OF MACROPHAGE, SHEEP PAb
----------	-------	--

NEURAL TISSUE DAMAGE MARKERS

C	CANINE	CLUSTERIN, RABBIT PAb
	CANINE	CLUSTERIN, SHEEP PAb
	HUMAN	CLUSTERIN, MOUSE MAb, Clone: HS-3
	HUMAN	CLUSTERIN, MOUSE MAb, Clone: 8H4
	RAT	CLUSTERIN, RABBIT PAb
	HUMAN	CYSTATIN C (E.COLI), RABBIT PAb
	HUMAN	CYSTATIN C (E.COLI), SHEEP PAb
	CANINE	CYSTATIN C, RABBIT PAb
	HUMAN	CYSTATIN C, RABBIT PAb

ANTIBODIES INDEX

MOUSE CYSTATIN C, RABBIT PAb
 CANINE CYSTATIN C, SHEEP PAb
 HUMAN CYSTATIN C, SHEEP PAb
 MOUSE CYSTATIN C, SHEEP PAb
 RAT CYSTATIN C, SHEEP PAb

N HUMAN NESFATIN-1, SHEEP PAb
 HUMAN NEUROGLOBIN, CHICKEN PAb
 HUMAN NEUROGLOBIN, MOUSE MAb, Clone: 13C8

O HUMAN OSTEOACTIVIN/GPNMB (HEK), RABBIT PAb
 HUMAN OSTEOACTIVIN/GPNMB (HEK), SHEEP PAb

P HUMAN PROSTAGLANDIN-D SYNTHASE (LIPOCALIN-TYPE), RABBIT PAb
 HUMAN PROSTAGLANDIN-D SYNTHASE (LIPOCALIN-TYPE), SHEEP PAb

R HUMAN REGUCALCIN, RABBIT PAb
 HUMAN REGUCALCIN, SHEEP PAb

S HUMAN S100A6, RABBIT PAb
 HUMAN S100A6, SHEEP PAb
 HUMAN S100A12, RABBIT PAb
 HUMAN S100A12, SHEEP PAb
 HUMAN S100G, SHEEP PAb
 HUMAN SECRETAGOGIN, RABBIT PAb
 RAT SECRETAGOGIN, RABBIT PAb
 HUMAN SECRETAGOGIN, SHEEP PAb
 HUMAN sRAGE, SHEEP PAb

V HUMAN VISININ-LIKE PROTEIN 1, RABBIT PAb
 HUMAN VISININ-LIKE PROTEIN 1, SHEEP PAb

ONCOLOGY

A HUMAN ANGIOPOIETIN-LIKE PROTEIN 3, RABBIT PAb
 HUMAN ANGIOPOIETIN-LIKE PROTEIN 3, SHEEP PAb
 HUMAN ANGIOSTATIN, RABBIT PAb
 HUMAN ANNEXIN A1, RABBIT PAb
 HUMAN ANNEXIN A1, SHEEP PAb
 HUMAN ARGINASE-I (LIVER TYPE), MOUSE MAb, Clone: 6G3

B HUMAN BETA-MICROSEMINOPROTEIN, RABBIT PAb
 HUMAN BETA-MICROSEMINOPROTEIN, SHEEP PAb

C HUMAN CLUSTERIN, MOUSE MAb, Clone: HS-3
 HUMAN CLUSTERIN, MOUSE MAb, Clone: 8H4
 CANINE CLUSTERIN, RABBIT PAb
 RAT CLUSTERIN, RABBIT PAb
 CANINE CLUSTERIN, SHEEP PAb

D HUMAN DECORIN, RABBIT PAb
 HUMAN DECORIN, SHEEP PAb

E HUMAN ENDOSTATIN, RABBIT PAb
 HUMAN EP-CAM (MK-1), MOUSE MAb, Clone: MK-1-25
 HUMAN EP-CAM (MK-1), MOUSE MAb, Clone: MK-1-410
 HUMAN EPIDERMAL FABP, RABBIT PAb
 HUMAN EPIDERMAL FABP, SHEEP PAb

F HUMAN FETUIN-B (HEK), RABBIT PAb

HUMAN FETUIN-B (HEK), SHEEP PAb
 HUMAN FOLLISTATIN, SHEEP PAb

G HUMAN GLUCOSE-REGULATED PROTEIN 78, SHEEP PAb
 HUMAN GRANULYSIN, RABBIT PAb
 HUMAN GRANULYSIN, SHEEP PAb

H HUMAN HERSTATIN, MOUSE MAb, Clone: 10C7
 HUMAN HERSTATIN, MOUSE MAb, Clone: 2D4
 HUMAN HERSTATIN, MOUSE MAb, Clone: 2E9
 HUMAN HERSTATIN, MOUSE MAb, Clone: 7H3
 HUMAN HERSTATIN, RABBIT PAb

I HUMAN INTERLEUKIN-33, RABBIT PAb
 HUMAN INTERLEUKIN-33, SHEEP PAb

M HUMAN MIDKINE, RABBIT PAb

O HUMAN OSTEOACTIVIN/GPNMB (HEK), RABBIT PAb
 HUMAN OSTEOACTIVIN/GPNMB (HEK), SHEEP PAb
 HUMAN OSTEOBLAST SPECIFIC FACTOR 2, RABBIT PAb
 HUMAN OSTEOBLAST SPECIFIC FACTOR 2, SHEEP PAb

P HUMAN PROLACTIN-INDUCIBLE PROTEIN, RABBIT PAb
 HUMAN PROLACTIN-INDUCIBLE PROTEIN, SHEEP PAb
 HUMAN PROSTATE-SPECIFIC GENE-1, RABBIT PAb
 HUMAN REGENERATING PROTEIN 1 ALPHA, RABBIT PAb

R HUMAN REGUCALCIN, RABBIT PAb
 HUMAN REGUCALCIN, SHEEP PAb

S HUMAN S100A5, SHEEP PAb
 HUMAN S100A6, RABBIT PAb
 HUMAN S100A6, SHEEP PAb
 HUMAN S100A8, SHEEP PAb
 HUMAN S100A11, SHEEP PAb
 HUMAN S100A12, RABBIT PAb
 HUMAN S100A12, SHEEP PAb
 HUMAN S100A13, SHEEP PAb
 HUMAN S100G, SHEEP PAb
 HUMAN S100P, RABBIT PAb
 HUMAN S100P, SHEEP PAb
 HUMAN SECRETAGOGIN, RABBIT PAb
 RAT SECRETAGOGIN, RABBIT PAb
 HUMAN SECRETAGOGIN, SHEEP PAb
 HUMAN STANNIOCALCIN 1, RABBIT PAb
 HUMAN STANNIOCALCIN 2, RABBIT PAb
 HUMAN STANNIOCALCIN 2, SHEEP PAb
 HUMAN STFR, MOUSE MAb, Clone: TFR-01

T HUMAN TREFOIL FACTOR 1, RABBIT PAb
 HUMAN TREFOIL FACTOR 1, SHEEP PAb
 HUMAN TREFOIL FACTOR 2, RABBIT PAb
 HUMAN TREFOIL FACTOR 2, SHEEP PAb
 HUMAN TREFOIL FACTOR 3, RABBIT PAb
 HUMAN TREFOIL FACTOR 3, SHEEP PAb

U HUMAN URINARY TRYPSIN INHIBITOR, RABBIT PAb

ANTIBODIES INDEX

V	HUMAN	VISININ-LIKE PROTEIN 1, RABBIT PAb
	HUMAN	VISININ-LIKE PROTEIN 1, SHEEP PAb
Z	HUMAN	ZINC-ALPHA-2-GLYCOPROTEIN, RABBIT PAb
	HUMAN	ZINC-ALPHA-2-GLYCOPROTEIN, SHEEP PAb
	HUMAN	ZYMOGEN GRANULE MEMBRANE PROTEIN 16, RABBIT PAb
	HUMAN	ZYMOGEN GRANULE MEMBRANE PROTEIN 16, SHEEP PAb

OTHERS

C	HUMAN	CLUSTERIN, MOUSE MAb, Clone: HS-3
	HUMAN	CLUSTERIN, MOUSE MAb, Clone: 8H4
	CANINE	CLUSTERIN, RABBIT PAb
	RAT	CLUSTERIN, RABBIT PAb
	CANINE	CLUSTERIN, SHEEP PAb
F	HUMAN	FETUIN-B (HEK), RABBIT PAb
	HUMAN	FETUIN-B (HEK), SHEEP PAb
H	HUMAN	HEPATITIS B PROTEIN X (HBX) VIRUS, RABBIT PAb
P	HUMAN	PARAOXONASE 1, SHEEP PAb
	HUMAN	PIGMENT EPITHELIUM-DERIVED FACTOR, RABBIT PAb
	HUMAN	PIGMENT EPITHELIUM-DERIVED FACTOR, SHEEP PAb
S	HUMAN	S100A6, RABBIT PAb
	HUMAN	S100A6, SHEEP PAb
	HUMAN	S100A10, SHEEP PAb
	HUMAN	S100A11, SHEEP PAb
	HUMAN	S100A13, SHEEP PAb
	HUMAN	S100A16, RABBIT PAb
	HUMAN	S100A16, SHEEP PAb
	HUMAN	S100G, SHEEP PAb
T	HUMAN	THYROSTIMULIN BETA SUBUNIT, RABBIT PAb
	HUMAN	THYROSTIMULIN BETA SUBUNIT, SHEEP PAb
Z	HUMAN	ZYMOGEN GRANULE MEMBRANE PROTEIN 16, RABBIT PAb
	HUMAN	ZYMOGEN GRANULE MEMBRANE PROTEIN 16, SHEEP PAb

PANCREATIC REGULATORY MOLECULES

R	HUMAN	REGENERATING ISLET-DERIVED PROTEIN 3 (REG3A/PAP1), RABBIT PAb
	HUMAN	REGENERATING PROTEIN 1 ALPHA, RABBIT PAb

PULMONARY DISEASES

A	HUMAN	ARGINASE-I (LIVER TYPE), MOUSE MAb, Clone: 6G3
C	HUMAN	CLUB CELL PROTEIN (CC16), RABBIT PAb
S	HUMAN	S100A8, SHEEP PAb
	HUMAN	S100A9, SHEEP PAb

RENAL DISEASE

A	HUMAN	APOPTOSIS INHIBITOR OF MACROPHAGE, SHEEP PAb
----------	-------	--

C	HUMAN	CLUSTERIN, MOUSE MAb, Clone: HS-3
	HUMAN	CLUSTERIN, MOUSE MAb, Clone: 8H4
	CANINE	CLUSTERIN, RABBIT PAb
	RAT	CLUSTERIN, RABBIT PAb
	CANINE	CLUSTERIN, SHEEP PAb
	HUMAN	CYSTATIN C (E.COLI), RABBIT PAb
	HUMAN	CYSTATIN C (E.COLI), SHEEP PAb
	CANINE	CYSTATIN C, RABBIT PAb
	HUMAN	CYSTATIN C, RABBIT PAb
	MOUSE	CYSTATIN C, RABBIT PAb
	CANINE	CYSTATIN C, SHEEP PAb
	HUMAN	CYSTATIN C, SHEEP PAb
	MOUSE	CYSTATIN C, SHEEP PAb
	RAT	CYSTATIN C, SHEEP PAb

F	HUMAN	FETUIN-A (AHSG), GOAT PAb
	HUMAN	FETUIN-A (AHSG), RABBIT PAb
	HUMAN	FIBROBLAST GROWTH FACTOR 23, RABBIT PAb

L	HUMAN	LIVER FATTY ACID BINDING PROTEIN, SHEEP PAb
----------	-------	---

O	HUMAN	OSTEOACTIVIN/GPNMB (HEK), RABBIT PAb
	HUMAN	OSTEOACTIVIN/GPNMB (HEK), SHEEP PAb

P	HUMAN	PROSTAGLANDIN-D SYNTHASE (LIPOCALIN-TYPE), RABBIT PAb
	HUMAN	PROSTAGLANDIN-D SYNTHASE (LIPOCALIN-TYPE), SHEEP PAb

S	HUMAN	S100A12, RABBIT PAb
	HUMAN	S100A12, SHEEP PAb
	HUMAN	sRAGE, SHEEP PAb

T	HUMAN	TREFOIL FACTOR 3, RABBIT PAb
	HUMAN	TREFOIL FACTOR 3, SHEEP PAb

U	HUMAN	URINARY TRYPSIN INHIBITOR, RABBIT PAb
	HUMAN	UROMODULIN, RABBIT PAb
	HUMAN	UROMODULIN, SHEEP PAb

REPRODUCTION

C	HUMAN	CORNIFIN-B, SHEEP PAb
	HUMAN	CYSTEINE-RICH SECRETORY PROTEIN 1, RABBIT PAb
	HUMAN	CYSTEINE-RICH SECRETORY PROTEIN 1, SHEEP PAb

F	HUMAN	FOLLISTATIN, SHEEP PAb
----------	-------	------------------------

L	HUMAN	LEPTIN RECEPTOR, MOUSE MAb, Clone: LPR-01
	HUMAN	LEPTIN RECEPTOR, MOUSE MAb, Clone: LPR-02
	HUMAN	LEPTIN, MOUSE MAb, Clone: LEP-02
	HUMAN	LEPTIN, RABBIT PAb
	MOUSE	LEPTIN, RABBIT PAb
	RAT	LEPTIN, RABBIT PAb

O	HUMAN	OMENTIN-1, RABBIT PAb
	HUMAN	OMENTIN-1, SHEEP PAb

P	HUMAN	PLACENTAL PROTEIN 13, RABBIT PAb
	HUMAN	PLACENTAL PROTEIN 13, SHEEP PAb
	HUMAN	PROLACTIN-INDUCIBLE PROTEIN, RABBIT PAb
	HUMAN	PROLACTIN-INDUCIBLE PROTEIN, SHEEP PAb

ANTIBODIES INDEX

S	HUMAN	S100P, RABBIT PAb
	HUMAN	S100P, SHEEP PAb
	HUMAN	STANNIOCALCIN 1, RABBIT PAb

SEPSIS

C	HUMAN	CLUSTERIN, MOUSE MAb, Clone: HS-3
	HUMAN	CLUSTERIN, MOUSE MAb, Clone: 8H4
	CANINE	CLUSTERIN, RABBIT PAb
	RAT	CLUSTERIN, RABBIT PAb
	CANINE	CLUSTERIN, SHEEP PAb

L	HUMAN	LEUCINE-RICH ALPHA-2-GLYCOPROTEIN, RABBIT PAb
	HUMAN	LEUCINE-RICH ALPHA-2-GLYCOPROTEIN, SHEEP PAb

S	HUMAN	S100A8, SHEEP PAb
	HUMAN	S100A9, SHEEP PAb

T	HUMAN	TREFOIL FACTOR 1, RABBIT PAb
	HUMAN	TREFOIL FACTOR 1, SHEEP PAb
	HUMAN	TREFOIL FACTOR 2, RABBIT PAb
	HUMAN	TREFOIL FACTOR 2, SHEEP PAb
	HUMAN	TREFOIL FACTOR 3, RABBIT PAb
	HUMAN	TREFOIL FACTOR 3, SHEEP PAb

U	HUMAN	URINARY TRYPSIN INHIBITOR, RABBIT PAb
----------	-------	---------------------------------------

STEROID HORMONES

C	HUMAN	CRFBP, SHEEP PAb
----------	-------	------------------

TRANSPLANTATION

A	HUMAN	ALLOGRAFT INFLAMMATORY FACTOR 1, SHEEP PAb
----------	-------	--

G	HUMAN	GRANULYSIN, RABBIT PAb
	HUMAN	GRANULYSIN, SHEEP PAb

Proteins

The isolation of many natural proteins at a production scale is ineffective or even impossible for many reasons. The use of modern recombinant protein technologies has overcome many of the limitations and enabled the preparation of a wide range of proteins facilitating research among the scientific community.

From among the many production designs, we have chosen to take advantage of the bacterial and mammalian cell expression systems. Special sequences (tags) enabling easy purification and determination are often linked to the C-terminus or N-terminus of the protein sequence.

An effective combination of HPLC techniques including ion-exchange chromatography, size exclusion chromatography, Ni-NTA chromatography or antibody immobilized affinity chromatography is used to purify the recombinant proteins.

▶ **HEK293 CELL-EXPRESSED RECOMBINANT PROTEINS**

Recombinant proteins produced by mammalian HEK293 cells exhibit superior features including their glycosylation pattern and proper folding and subsequent solubility in buffers of physiological pH and ionic strength. As a whole they possess features making them the most similar to natural proteins with respect to their structure, antigenicity and biological activity.

▶ **E. COLI-EXPRESSED RECOMBINANT PROTEINS**

E. coli bacterial expression systems are widely used to produce recombinant proteins easily, quickly, cost effectively and in large quantity. Such is usually the primary method of choice to produce recombinant proteins of small size and unglycosylated proteins. Such proteins often possess antigenicity and biological activity meeting all customer requirements.

▶ **ISOLATED NATURAL PROTEINS**

Human or animal body fluids and tissues are traditional sources of raw materials for the isolation of proteins occurring in concentrations high enough to make their isolation possible and effective. Using deliberately selected, sophisticated purification methods, isolated proteins maintain most of their natural biological functions. HPLC techniques, ion-exchange chromatography, size exclusion chromatography or affinity chromatography are all employed.

PROTEINS INDEX

ANIMAL STUDIES

A	Rec.	MOUSE	ADIPONECTIN
	Rec.	MOUSE	ADIPONECTIN (Trimeric form)
	Rec.	PORCINE	ADIPONECTIN
	Rec.	RAT	ADIPONECTIN
	Rec.	MURINE	ADIPONECTIN

C	Rec.	CANINE	CLUSTERIN
	Rec.	RAT	CLUSTERIN
	Rec.	CANINE	CYSTATIN C
	Rec.	MOUSE	CYSTATIN C
	Rec.	RAT	CYSTATIN C

E	Rec.	MURINE	EOTAXIN
----------	------	--------	---------

F	Rec.	MOUSE	FIBROBLAST GROWTH FACTOR 15
	Rec.	MOUSE	FIBROBLAST GROWTH FACTOR 21
	Rec.	MOUSE	FIBROBLAST GROWTH FACTOR 21, Tag-free
	Rec.	RAT	FRACTALKINE

G	Rec.	MURINE	GM-CSF
	Rec.	RAT	GM-CSF

I	Rec.	MURINE	INTERLEUKIN-2
	Rec.	RAT	INTERLEUKIN-2
	Rec.	MURINE	INTERLEUKIN-4
	Rec.	RAT	INTERLEUKIN-4
	Rec.	MURINE	INTERLEUKIN-5
	Rec.	RAT	INTERLEUKIN-5
	Rec.	MURINE	INTERLEUKIN-6
	Rec.	RAT	INTERLEUKIN-6
	Rec.	MURINE	INTERLEUKIN-22

I	Rec.	MURINE	INTERLEUKIN-10
	Rec.	RAT	INTERLEUKIN-10
	Rec.	MURINE	INTERLEUKIN-12
	Rec.	MURINE	INTERLEUKIN-13
	Rec.	RAT	INTERLEUKIN-13
	Rec.	MURINE	INTERLEUKIN-17F

L	Rec.	MOUSE	LEPTIN, Tag-free
	Rec.	RAT	LEPTIN, Tag-free

M	Rec.	RAT	MONOCYTE CHEMOTACTIC PROTEIN-1
----------	------	-----	--------------------------------

P	Rec.	MURINE	PROLACTIN
	Rec.	RAT	PROLACTIN

R	Rec.	MOUSE	RESISTIN
	Rec.	RAT	RESISTIN

T	Rec.	MURINE	TNF- α
	Rec.	RAT	TNF- α

APOPTOSIS

Rec.	HUMAN	4-1BB LIGAND
Rec.	HUMAN	4-1BB RECEPTOR

A	Rec.	HUMAN	ACTIVIN A
	Rec.	RAT	
	Rec.	MURINE	
	Rec.	HUMAN	ACTIVIN B
	Rec.	HUMAN	AITRL
	Rec.	HUMAN	ANG-1
	Rec.	HUMAN	ANG-2
A	Rec.	MURINE	APRIL
	Rec.	HUMAN	APRIL

B	Rec.	HUMAN	BMP-3
	Rec.	HUMAN	BMP-6

C	Rec.	HUMAN	CNTF
	Rec.	RAT	CNTF
	Rec.	HUMAN	CTGF
	Rec.	HUMAN	CTGFL/WISP-2
	Rec.	HUMAN	CYCLOPHILIN F

G	Rec.	HUMAN	GALECTIN-1
	Rec.	MURINE	GRANZYME B BACULOVIRUS

H	Rec.	HUMAN	HB-EGF
	Rec.	HUMAN	HEREGULIN β -1
	Rec.	HUMAN	HVEM-FC

I	Rec.	HUMAN	IGF-BP1
	Rec.	HUMAN	IGF-BP2
	Rec.	HUMAN	IGF-BP3
	Rec.	HUMAN	IGF-BP4
	Rec.	HUMAN	IGF-BP5
	Rec.	HUMAN	IGF-BP6
	Rec.	HUMAN	IGF-BP7
	Rec.	HUMAN	INTERLEUKIN-16
	Rec.	HUMAN	INTERLEUKIN-24

M	Rec.	HUMAN	MASPIN
	Rec.	HUMAN	MIA
	Rec.	HUMAN	MIA-2
	Rec.		MYCOPLASMA ARGININE DEIMINASE (ADI)

P	Rec.	HUMAN	PTHrP
----------	------	-------	-------

S	Rec.	HUMAN	SCD40 LIGAND
	Rec.	MURINE	SCD40 LIGAND
	Rec.	HUMAN	SDLL-1
	Rec.	HUMAN	SDLL-4
	Rec.	HUMAN	SERGLYCIN
	Rec.	HUMAN	sFAS LIGAND
	Rec.	HUMAN	sFRP-1
	Rec.	HUMAN	SONIC HEDGEHOG (SHH)
	Rec.	MURINE	SONIC HEDGEHOG (SHH)
	Rec.	HUMAN	sRANK LIGAND
	Rec.	MURINE	sRANK LIGAND
	Rec.	RAT	sRANK LIGAND
	Rec.	HUMAN	sTRAIL/APO2L

T	Rec.	HUMAN	TGF-BETA 1
	Rec.	HUMAN	TGF-BETA 1
	Rec.	HUMAN	TGF-BETA 2
	Rec.	HUMAN	TGF-BETA 3

PROTEINS INDEX

Rec.	HUMAN	TGF- β 2
Rec.	HUMAN	THYMOSIN- β 4
Rec.	HUMAN	TIGAR
Rec.	HUMAN	TIGAR-TAT
Rec.	HUMAN	TL-1A
Rec.	HUMAN	TLR-3
Rec.	HUMAN	TNF- β
Rec.	MURINE	TRAIL
Rec.	HUMAN	TSLP

AUTOIMMUNITY

G Rec. HUMAN GLUCOSE-REGULATED PROTEIN 78

M Rec. HUMAN MIF

BLOOD PRESSURE REGULATION AND NO METABOLISM

R Rec. HUMAN RENIN

BONE AND CARTILAGE METABOLISM

A Rec. HUMAN ANG-1
Rec. HUMAN ANG-2

B Rec. HUMAN BMP-3
Rec. HUMAN BMP-5
Rec. HUMAN BMP-6
Rec. HUMAN BONE MORPHOGENETIC PROTEIN-2
Rec. HUMAN BONE MORPHOGENETIC PROTEIN-4
Rec. MURINE BONE MORPHOGENETIC PROTEIN-4

C Rec. MURINE CARDIOTROPHIN-1
Rec. HUMAN CARTILAGE OLIGOMERIC MATRIX PROTEIN
Rec. HUMAN CNTF
Rec. RAT CNTF
Rec. HUMAN CTHRP 1
Rec. HUMAN CYTOKINE-LIKE PROTEIN 1

D Rec. HUMAN DKK-1
Rec. HUMAN ENPP1

F Rec. HUMAN FETUIN-A (AHSG)
Nat. HUMAN FETUIN-A (AHSG)
Rec. HUMAN FETUIN-B
Rec. HUMAN FGF-8
Rec. HUMAN FOLLISTATIN

G Rec. HUMAN GASP-1
Rec. HUMAN GCP-2
Rec. HUMAN GDF-7
Rec. HUMAN GREMLIN-1

I Rec. HUMAN IL-34

O Rec. HUMAN IGF-I
Rec. MURINE IGF-I
Rec. HUMAN INTERLEUKIN-34

L Nat. HUMAN LACTOFERRIN

M Rec. HUMAN MMP-1
Rec. HUMAN MMP-2
Rec. HUMAN MMP-3

O Rec. HUMAN ONCOSTATIN M
Rec. RAT ONCOSTATIN M
Rec. HUMAN OSTEOACTIVIN/GPNMB
Rec. HUMAN OSTEOBLAST SPECIFIC FACTOR 1
Rec. HUMAN OSTEOBLAST SPECIFIC FACTOR 2
Rec. HUMAN OSTEOCRIN
Rec. HUMAN OSTEOPONTIN
Rec. HUMAN OSTEOPROTEGERIN
Rec. HUMAN OSTEOSTAT

P Rec. HUMAN PDGF-AA
Rec. MURINE PDGF-AA
Rec. HUMAN PDGF-AB
Rec. HUMAN PDGF-BB
Rec. MURINE PDGF-BB
Rec. HUMAN PDGF-CC
Rec. HUMAN PHOSPHOETHANOLAMINE/PHOSPHOCHOLINE PHOSPHATASE
Rec. HUMAN PTHrP
Rec. HUMAN REGUCALCIN

S Rec. HUMAN SCGF- α
Rec. HUMAN SCGF- β
Rec. HUMAN SCLEROSTIN
Rec. HUMAN SONIC HEDGEHOG (SHH)
Rec. MURINE SONIC HEDGEHOG (SHH)
Rec. HUMAN SPARC/OSTEONECTIN
Rec. HUMAN sRANK LIGAND
Rec. MURINE sRANK LIGAND
Rec. RAT sRANK LIGAND
Rec. HUMAN STANNIOCALCIN 1
Rec. HUMAN STANNIOCALCIN 2

T Rec. HUMAN TSG

W Rec. HUMAN WISP-3
Rec. HUMAN WNT1-INDUCIBLE-SIGNALING PATHWAY PROTEIN 1
Rec. MURINE WNT-3A

CARDIOVASCULAR DISEASE

Rec. HUMAN 4-1BB LIGAND

Rec. HUMAN 6-PHOSPHOGLUCONATE DEHYDROGENASE, DECARBOXYLATING

A Rec. HUMAN
Rec. RAT
Rec. MURINE
Rec. HUMAN ALLOGRAFT INFLAMMATORY FACTOR 1
Rec. HUMAN AMINOACYLASE-1
Rec. HUMAN ANG-1
Rec. HUMAN ANG-2
Rec. HUMAN APOA-1
Rec. HUMAN APOE2

PROTEINS INDEX

	Rec.	HUMAN	APOE3		Rec.	RAT	GDNF	
	Rec.	HUMAN	APOE4		Rec.	HUMAN	GLUCOSE-REGULATED PROTEIN 78	
	Rec.	HUMAN	APO-SAA1		Rec.	RAT	GRO/KC	
B	Rec.	HUMAN	BMP-3		Rec.	HUMAN	GRO/MGSA	
	Rec.	HUMAN	BMP-6		Rec.	HUMAN	GRO-β	
					Rec.	RAT	GRO-β/MIP-2	
C	Rec.	HUMAN	CARDIOTROPHIN 1		Rec.	HUMAN	GRO-γ	
	Rec.	MURINE	CARDIOTROPHIN-1		Rec.	MURINE	GRO-γ	
	Rec.	HUMAN	CNTF					
	Rec.	RAT	CNTF		H	Rec.	HUMAN	HB-EGF
	Rec.	HUMAN	CTHRP 1			Rec.	HUMAN	HEART FABP
	Rec.	HUMAN	CTGF			Rec.	HUMAN	HEREGULINβ-1
	Rec.	HUMAN	CTGFL/WISP-2					
	Rec.	HUMAN	CTRP9A		I	Rec.	MURINE	IFN-γ
	Rec.	HUMAN	CYCLOPHILIN A			Rec.	RAT	IFN-γ
	Rec.	MOUSE	CYCLOPHILIN A			Rec.	HUMAN	IGF-I
	Rec.	RAT	CYCLOPHILIN A			Rec.	MURINE	IGF-I
	Rec.	HUMAN	CYR61			Rec.	HUMAN	INTERLEUKIN-1β
						Rec.	MURINE	INTERLEUKIN-1β
D	Rec.	HUMAN	DECORIN			Rec.	RAT	INTERLEUKIN-1β
						Rec.	HUMAN	INTERLEUKIN-17B
E	Rec.	HUMAN	EGF			Rec.	HUMAN	INTERLEUKIN-17D
	Rec.	MURINE	EGF			Rec.	HUMAN	INTERLEUKIN-19
	Rec.	RAT	EGF			Rec.	HUMAN	INTERLEUKIN-24
	Rec.	HUMAN	EGF RECEPTOR (EGFR)			Rec.	HUMAN	INTERLEUKIN-33
	Rec.	HUMAN	EG-VEGF			Rec.	MURINE	INTERLEUKIN-33
	Rec.	HUMAN	ENA-78		J	Rec.	MURINE	JE/MCP-1
	Rec.	HUMAN	ENA-78 (5-78 a.a.)					
	Rec.	HUMAN	ENDOTHELIAL LIPASE		K	Rec.	HUMAN	KALLISTATIN
	Rec.	HUMAN	EPIDERMAL FABP, Tag-free			Rec.	MURINE	KC
						Rec.	HUMAN	KGF
F	Nat.	HUMAN	FETUIN-A (AHSG)					
	Rec.	HUMAN	FGF-10		L	Rec.	HUMAN	LECITHIN-CHOLESTEROL ACYLTRANSFERASE
	Rec.	HUMAN	FGF-16			Rec.	MURINE	LIX [70a.a.]
	Rec.	HUMAN	FGF-17			Rec.	MURINE	LIX [92a.a.]
	Rec.	HUMAN	FGF-18					
	Rec.	HUMAN	FGF-20		M	Rec.	HUMAN	MASPIN
	Rec.	HUMAN	FGF-4			Rec.	HUMAN	MCP-2
	Rec.	HUMAN	FGF-5			Rec.	MURINE	MCP-2
	Rec.	HUMAN	FGF-6			Rec.	HUMAN	MCP-3
	Rec.	HUMAN	FGF-8			Rec.	MURINE	MCP-3
	Rec.	HUMAN	FGF-9			Rec.	HUMAN	MCP-4
	Rec.	MURINE	FGF-9			Rec.	MURINE	MCP-5
	Rec.	HUMAN	FGF-ACIDIC			Rec.	HUMAN	MIG
	Rec.	MURINE	FGF-ACIDIC			Rec.	MURINE	MIG
	Rec.	RAT	FGF-ACIDIC			Rec.	HUMAN	MMP-1
	Rec.	HUMAN	FGF-BASIC			Rec.	HUMAN	MMP-2
	Rec.	MURINE	FGF-BASIC			Rec.	HUMAN	MMP-3
	Rec.	RAT	FGF-BASIC			Rec.	HUMAN	MYOSTATIN PROPEPTIDE, Tag-free
G	Rec.	HUMAN	GASP-1					
	Rec.	HUMAN	GCP-2		N	Rec.	HUMAN	NATRIURETIC PEPTIDES A
	Rec.	HUMAN	G-CSF			Rec.	HUMAN	NATRIURETIC PEPTIDES B
	Rec.	MURINE	G-CSF			Rec.	HUMAN	NOV
	Rec.	HUMAN	GDF-15/MIC-1					
	Rec.	HUMAN	GDF-2		O	Rec.	HUMAN	ONCOSTATIN M
	Rec.	HUMAN	GDF-5 (BMP-14/CDMP-1)			Rec.	RAT	ONCOSTATIN M
	Rec.	MURINE	GDF-5 (BMP-14/CDMP-1)			Rec.	HUMAN	OSTEOBLAST SPECIFIC FACTOR 2
	Rec.	HUMAN	GDNF			Rec.	HUMAN	OSTEOPONTIN
	Rec.	MURINE	GDNF					

PROTEINS INDEX

P	Rec.	HUMAN	PARAOXONASE 1	
	Rec.	HUMAN	PDGF-AA	
	Rec.	MURINE	PDGF-AA	
	Rec.	HUMAN	PDGF-AB	
	Rec.	HUMAN	PDGF-BB	
	Rec.	MURINE	PDGF-BB	
	Rec.	HUMAN	PDGF-CC	
	Rec.	HUMAN	PENTRAXIN 3	
	Rec.	HUMAN	PEPTIDOGLYCAN RECOGNITION PROTEIN 1	
	Rec.	HUMAN	PF-4	
	Rec.	MURINE	PF-4	
	Rec.	HUMAN	PLGF-1	
	Rec.	HUMAN	PLGF-2	
	Rec.	HUMAN	PLGF-3	
	Rec.	HUMAN	PTHrP	
	R	Rec.	HUMAN	RANTES
		Rec.	MURINE	RANTES
Rec.		RAT	RANTES	
Rec.		HUMAN	RENIN	
Rec.		HUMAN	RENIN RECEPTOR	
Rec.		HUMAN	R-SPONDIN-3	
S	Rec.	HUMAN	S100A1	
	Rec.	HUMAN	S100A10	
	Rec.	HUMAN	S100A11	
	Rec.	HUMAN	S100A13	
	Rec.	HUMAN	S100A4	
	Rec.	HUMAN	S100G	
	Rec.	HUMAN	S100P	
	Rec.	HUMAN	SCD40 LIGAND	
	Rec.	MURINE	SCD40 LIGAND	
	Rec.	HUMAN	SDLL-1	
	Rec.	HUMAN	SDLL-4	
	Rec.	HUMAN	SERGLYCIN	
	Rec.	HUMAN	sFRP-1	
	Rec.	HUMAN	SPARC/OSTEONECTIN	
	T	Rec.	HUMAN	TGF-ALPHA
		Rec.	HUMAN	TGF-BETA 1
Rec.		HUMAN	TGF-BETA 1	
Rec.		HUMAN	TGF-BETA 2	
Rec.		HUMAN	TGF-BETA 3	
Rec.		HUMAN	TGF- β 2	
Rec.		HUMAN	THROMBOMODULIN	
Rec.		HUMAN	TL-1A	
Rec.		HUMAN	TNF- β	
U		Rec.	HUMAN	UBIQUITIN CARBOXYL-TERMINAL HYDROLASE ISOZYME L1
V	Rec.	HUMAN	VEGF121	
	Rec.	HUMAN	VEGF165	
	Rec.	MURINE	VEGF165	
	Rec.	RAT	VEGF165	
	Rec.	HUMAN	VEGF-B	
	Rec.	HUMAN	VEGF-D	
W	Rec.	HUMAN	WISP-3	
	Rec.	HUMAN	β -NGF	
	Rec.	MURINE	β -NGF	

CELL SURFACE PROTEINS (SCD)

D	Rec.	HUMAN	DIPEPTIDYL PEPTIDASE IV (DPIV)
----------	------	-------	--------------------------------

CORONARY ARTERY DISEASE

A	Nat.	HUMAN	ADIPONECTIN
	Rec.	HUMAN	ADIPONECTIN
	Rec.	HUMAN	ADIPONECTIN (HMW-rich), Tag-free
	Rec.	HUMAN	ADIPONECTIN (Trimeric form)
	Rec.	MOUSE	ADIPONECTIN
	Rec.	MOUSE	ADIPONECTIN, Tag-free
	Rec.	MOUSE	ADIPONECTIN (Trimeric form)
	Rec.	PORCINE	ADIPONECTIN
	Rec.	RAT	ADIPONECTIN
	Rec.	HUMAN	ADIPONECTIN (GLOBULAR)
	Rec.	MURINE	ADIPONECTIN
	Rec.	HUMAN	ADIPONECTIN SOLUTION
B	Rec.	HUMAN	BMP-3
	Rec.	HUMAN	BMP-6
C	Rec.	MURINE	CARDIOTROPHIN-1
	Rec.	HUMAN	CNTF
	Rec.	RAT	CNTF
	Rec.	HUMAN	CTHRP 1
	Rec.	HUMAN	CTGF
	Rec.	HUMAN	CTGFL/WISP-2
	Rec.	HUMAN	CYR61
E	Rec.	HUMAN	EGF
	Rec.	MURINE	EGF
	Rec.	RAT	EGF
	Rec.	HUMAN	EGF RECEPTOR (EGFR)
	Rec.	HUMAN	EG-VEGF
	Rec.	HUMAN	ENA-78
	Rec.	HUMAN	ENA-78 (5-78 a.a.)
F	Rec.	HUMAN	FGF-10
	Rec.	HUMAN	FGF-16
	Rec.	HUMAN	FGF-17
	Rec.	HUMAN	FGF-18
	Rec.	HUMAN	FGF-20
	Rec.	HUMAN	FGF-4
	Rec.	HUMAN	FGF-5
	Rec.	HUMAN	FGF-6
	Rec.	HUMAN	FGF-8
	Rec.	HUMAN	FGF-9
	Rec.	MURINE	FGF-9
	Rec.	HUMAN	FGF-ACIDIC
	Rec.	MURINE	FGF-ACIDIC
	Rec.	RAT	FGF-ACIDIC
	Rec.	HUMAN	FGF-BASIC
	Rec.	MURINE	FGF-BASIC
Rec.	RAT	FGF-BASIC	
G	Rec.	HUMAN	GASP-1
	Rec.	HUMAN	GCP-2
	Rec.	HUMAN	G-CSF
	Rec.	MURINE	G-CSF

PROTEINS INDEX

Rec.	HUMAN	GDF-2			
Rec.	HUMAN	GDNF			
Rec.	MURINE	GDNF			
Rec.	RAT	GDNF			
Rec.	RAT	GRO/KC			
Rec.	HUMAN	GRO/MGSA			
Rec.	HUMAN	GRO- β			
Rec.	RAT	GRO- β /MIP-2			
Rec.	HUMAN	GRO- γ			
Rec.	MURINE	GRO- γ			
<hr/>					
H	Rec.	HUMAN	HB-EGF		
	Rec.	HUMAN	HEREGULIN β -1		
<hr/>					
I	Rec.	MURINE	IFN- γ		
	Rec.	RAT	IFN- γ		
	Rec.	HUMAN	IGF-I		
	Rec.	MURINE	IGF-I		
	Rec.	HUMAN	INTERLEUKIN-1 β		
	Rec.	MURINE	INTERLEUKIN-1 β		
	Rec.	RAT	INTERLEUKIN-1 β		
	Rec.	HUMAN	INTERLEUKIN-17B		
	Rec.	HUMAN	INTERLEUKIN-17D		
	Rec.	HUMAN	INTERLEUKIN-19		
	Rec.	HUMAN	INTERLEUKIN-24		
<hr/>					
J	Rec.	MURINE	JE/MCP-1		
<hr/>					
K	Rec.	MURINE	KC		
	Rec.	HUMAN	KGF		
<hr/>					
L	Rec.	MURINE	LIX [70a.a.]		
	Rec.	MURINE	LIX [92a.a.]		
<hr/>					
M	Rec.	HUMAN	MASPIN		
	Rec.	HUMAN	MCP-2		
	Rec.	MURINE	MCP-2		
	Rec.	HUMAN	MCP-3		
	Rec.	MURINE	MCP-3		
	Rec.	HUMAN	MCP-4		
	Rec.	MURINE	MCP-5		
	Rec.	HUMAN	MIG		
	Rec.	MURINE	MIG		
	Rec.	HUMAN	MMP-1		
	Rec.	HUMAN	MMP-2		
	Rec.	HUMAN	MMP-3		
<hr/>					
N	Rec.	HUMAN	NOV		
<hr/>					
O	Rec.	HUMAN	ONCOSTATIN M		
	Rec.	RAT	ONCOSTATIN M		
<hr/>					
P	Rec.	HUMAN	PDGF-AA		
	Rec.	MURINE	PDGF-AA		
	Rec.	HUMAN	PDGF-AB		
	Rec.	HUMAN	PDGF-BB		
	Rec.	MURINE	PDGF-BB		
	Rec.	HUMAN	PDGF-CC		
	Rec.	HUMAN	PF-4		
	Rec.	MURINE	PF-4		
<hr/>					
	Rec.	HUMAN	PLGF-1		
	Rec.	HUMAN	PLGF-2		
	Rec.	HUMAN	PLGF-3		
	Rec.	HUMAN	PTHrP		
<hr/>					
R	Rec.	HUMAN	RANTES		
	Rec.	MURINE	RANTES		
	Rec.	RAT	RANTES		
	Rec.	HUMAN	R-SPONDIN-3		
<hr/>					
S	Rec.	HUMAN	S100A9		
	Rec.	HUMAN	SCD40 LIGAND		
	Rec.	MURINE	SCD40 LIGAND		
	Rec.	HUMAN	SDLL-1		
	Rec.	HUMAN	SDLL-4		
	Rec.	HUMAN	sFRP-1		
	Rec.	HUMAN	SPARC/OSTEONECTIN		
<hr/>					
T	Rec.	HUMAN	TGF-ALPHA		
	Rec.	HUMAN	TGF-BETA 1		
	Rec.	HUMAN	TGF-BETA 1		
	Rec.	HUMAN	TGF-BETA 2		
	Rec.	HUMAN	TGF-BETA 3		
	Rec.	HUMAN	TGF- β 2		
	Rec.	HUMAN	THROMBOMODULIN		
	Rec.	HUMAN	TL-1A		
	Rec.	HUMAN	TNF- β		
<hr/>					
V	Rec.	HUMAN	VEGF121		
	Rec.	HUMAN	VEGF165		
	Rec.	MURINE	VEGF165		
	Rec.	RAT	VEGF165		
	Rec.	HUMAN	VEGF-B		
	Rec.	HUMAN	VEGF-D		
<hr/>					
W	Rec.	HUMAN	WISP-3		
<hr/>					
β	Rec.	HUMAN	β -NGF		
	Rec.	MURINE	β -NGF		

CYTOKINES AND CHEMOKINES AND RELATED MOLECULES

A	Rec.	MURINE	APRIL		
	Rec.	HUMAN	APRIL		
<hr/>					
B	Rec.	HUMAN	BCA-1/BLC		
	Rec.	MURINE	BCA-1/BLC		
	Rec.	HUMAN	BRAK		
<hr/>					
C	Rec.	MURINE	C10		
	Rec.	HUMAN	CCL19 (MIP-3 β)		
	Rec.	HUMAN	CCL2 (MCP-1)		
	Rec.	HUMAN	CCL17		
	Rec.	HUMAN	CCL27 (CTACK)		
	Rec.	HUMAN	CCL28 (MEC)		
	Rec.	HUMAN	CCL3 (MIP-1 α)		
	Rec.	HUMAN	CCL5 (RANTES)		
	Rec.	HUMAN	CCL7 (MCP-3)		
	Rec.	HUMAN	CCL7 (MCP-3)		
	Rec.	HUMAN	CTACK		

PROTEINS INDEX

Rec. MURINE CTACK
 Rec. HUMAN CTRP1
 Rec. HUMAN CTRP3
 Rec. HUMAN CTRP9A
 Rec. HUMAN CXCL12 (SDF-1 α)
 Rec. HUMAN CXCL12 (SDF-1 α) (Biotinylated)
 Rec. HUMAN CXCL12 (SDF-1 α)
 Rec. HUMAN CXCL16
 Rec. MURINE CXCL16
 Rec. HUMAN CXCL8 (IL-8)

E Rec. HUMAN ENA-78
 Rec. HUMAN ENA-78 (5-78 a.a.)
 Rec. HUMAN EOTAXIN
 Rec. MURINE EOTAXIN
 Rec. HUMAN EOTAXIN-3
 Rec. HUMAN EXODUS-2
 Rec. MURINE EXODUS-2

G Rec. HUMAN GCP-2
 Rec. HUMAN GDF-15/MIC-1
 Rec. HUMAN GM-CSF
 Rec. MURINE GM-CSF
 Rec. RAT GM-CSF
 Rec. RAT GRO/KC
 Rec. HUMAN GRO/MGSA
 Rec. HUMAN GRO- β
 Rec. RAT GRO- β /MIP-2
 Rec. HUMAN GRO- γ
 Rec. MURINE GRO- γ

H Rec. HUMAN HEPATOCYTE GROWTH FACTOR
 Rec. MURINE HEPATOCYTE GROWTH FACTOR

I Rec. HUMAN I-309
 Rec. HUMAN IFN- γ
 Rec. HUMAN IFN- ω
 Rec. HUMAN IL-2
 Rec. HUMAN IL-4
 Rec. HUMAN INTERLEUKIN-1 α
 Rec. MURINE INTERLEUKIN-1 α
 Rec. RAT INTERLEUKIN-1 α
 Rec. HUMAN INTERLEUKIN-1 β
 Rec. MURINE INTERLEUKIN-1 β
 Rec. RAT INTERLEUKIN-1 β
 Rec. HUMAN INTERLEUKIN-2
 Rec. HUMAN INTERLEUKIN-4
 Rec. MURINE INTERLEUKIN-4
 Rec. RAT INTERLEUKIN-4
 Rec. HUMAN INTERLEUKIN-5
 Rec. MURINE INTERLEUKIN-5
 Rec. RAT INTERLEUKIN-5
 Rec. HUMAN INTERLEUKIN-6
 Rec. MURINE INTERLEUKIN-6
 Rec. RAT INTERLEUKIN-6
 Rec. HUMAN INTERLEUKIN-7
 Rec. MURINE INTERLEUKIN-7
 Rec. RAT INTERLEUKIN-7
 Rec. HUMAN INTERLEUKIN-8
 Rec. HUMAN INTERLEUKIN-9

Rec. MURINE INTERLEUKIN-9
 Rec. RAT INTERLEUKIN-9
 Rec. HUMAN INTERLEUKIN-10
 Rec. MURINE INTERLEUKIN-10
 Rec. RAT INTERLEUKIN-10
 Rec. HUMAN INTERLEUKIN-12
 Rec. MURINE INTERLEUKIN-12
 Rec. HUMAN INTERLEUKIN-12 p80
 Rec. HUMAN INTERLEUKIN-13
 Rec. MURINE INTERLEUKIN-13
 Rec. RAT INTERLEUKIN-13
 Rec. HUMAN INTERLEUKIN-13 VARIANT
 Rec. HUMAN INTERLEUKIN-15
 Rec. MURINE INTERLEUKIN-15
 Rec. RAT INTERLEUKIN-15
 Rec. HUMAN INTERLEUKIN-17F
 Rec. MURINE INTERLEUKIN-17F
 Rec. HUMAN INTERLEUKIN-21
 Rec. MURINE INTERLEUKIN-21
 Rec. HUMAN INTERLEUKIN-22
 Rec. MURINE INTERLEUKIN-22
 Rec. HUMAN INTERLEUKIN-23
 Rec. HUMAN INTERLEUKIN-31
 Rec. MURINE INTERLEUKIN-31
 Rec. HUMAN INTERLEUKIN-33
 Rec. MURINE INTERLEUKIN-33
 Rec. HUMAN IP-10
 Rec. RAT IP-10
 Rec. HUMAN I-TAC
 Rec. MURINE I-TAC

J Rec. MURINE JE/MCP-1

K Rec. MURINE KC

L Rec. HUMAN LAG-1
 Rec. HUMAN LD78 β
 Rec. HUMAN LEC
 Rec. HUMAN LIF
 Rec. MURINE LIGHT
 Rec. HUMAN LIGHT
 Rec. MURINE LIX [70a.a.]
 Rec. MURINE LIX [92a.a.]
 Rec. MURINE LUNGKINE

M Rec. HUMAN MCP-2
 Rec. MURINE MCP-2
 Rec. HUMAN MCP-3
 Rec. MURINE MCP-3
 Rec. HUMAN MCP-4
 Rec. MURINE MCP-5
 Rec. HUMAN MDC
 Rec. MURINE MDC
 Rec. HUMAN MEC
 Rec. MURINE MEC
 Rec. HUMAN MIF
 Rec. HUMAN MIG
 Rec. MURINE MIG
 Rec. HUMAN MIP-1 α
 Rec. MURINE MIP-1 α
 Rec. RAT MIP-1 α

PROTEINS INDEX

Rec.	HUMAN	MIP-1 β
Rec.	MURINE	MIP-1 β
Rec.	RAT	MIP-1 β
Rec.	HUMAN	MIP-3
Rec.	HUMAN	MIP-3 α
Rec.	MURINE	MIP-3 α
Rec.	HUMAN	MIP-3 β
Rec.	MURINE	MIP-3 β
Rec.	HUMAN	MIP-4
Rec.	HUMAN	MIP-5
Rec.	RAT	MONOCYTE CHEMOTACTIC PROTEIN-1

N	Rec.	HUMAN	NAP-2
	Rec.	MURINE	NEUROPOIETIN
	Rec.	HUMAN	NP-1

O	Rec.	HUMAN	OSTEOBLAST SPECIFIC FACTOR 1
	Rec.	HUMAN	OSTEOBLAST SPECIFIC FACTOR 2
	Rec.	HUMAN	OTOR

P	Rec.	HUMAN	PF-4
	Rec.	MURINE	PF-4

R	Rec.	HUMAN	RANTES
	Rec.	MURINE	RANTES
	Rec.	RAT	RANTES

S	Rec.	HUMAN	SCD100
	Rec.	MURINE	SDF-1 α
	Rec.	RAT	SDF-1 α
	Rec.	HUMAN	SDF-1 β
	Rec.	MURINE	SDF-1 β
	Rec.	RAT	SDF-1 β
	Rec.	HUMAN	SLIT2-N
	Rec.	HUMAN	ST2

T	Rec.	HUMAN	TAFA-2
	Rec.	HUMAN	TARC
	Rec.	HUMAN	TECK
	Rec.	HUMAN	TNF- α
	Rec.	MURINE	TNF- α
	Rec.	RAT	TNF- α

V	Rec.	HUMAN	VEGF-C
	Rec.	HUMAN	VEGF-R1/FLT-1
	Rec.	HUMAN	VISFATIN

β	Rec.	HUMAN	β -NGF
	Rec.	MURINE	β -NGF

Rec.	MOUSE	ADIPONECTIN, Tag-free
Rec.	MOUSE	ADIPONECTIN (Trimeric form)
Rec.	PORCINE	ADIPONECTIN
Rec.	RAT	ADIPONECTIN
Rec.	HUMAN	ADIPONECTIN (GLOBULAR)
Rec.	MURINE	ADIPONECTIN
Rec.	HUMAN	ADIPONECTIN SOLUTION
Rec.	HUMAN	APOLIPOPROTEIN M

B	Rec.	HUMAN	BETATROPHIN
	Rec.	MOUSE	BETATROPHIN
	Rec.	RAT	BETATROPHIN

C	Rec.	HUMAN	CNTF
	Rec.	RAT	CNTF

D	Rec.	HUMAN	DIPEPTIDYL PEPTIDASE IV (DPIV)
----------	------	-------	--------------------------------

E	Rec.	HUMAN	ENPP1
	Rec.	HUMAN	EPIDERMAL FABP , Tag-free

F	Rec.	HUMAN	FAM3B
	Rec.	HUMAN	FIBROBLAST GROWTH FACTOR 21
	Rec.	HUMAN	FIBROBLAST GROWTH FACTOR 21 , Tag-free
	Rec.	MOUSE	FIBROBLAST GROWTH FACTOR 21
	Rec.	MOUSE	FIBROBLAST GROWTH FACTOR 21 , Tag-free

G	Rec.	MURINE	GACRP30
	Rec.	HUMAN	GANGLIOSIDE GM2 ACTIVATOR
	Rec.	HUMAN	GASP-1
	Rec.	HUMAN	G-CSF
	Rec.	MURINE	G-CSF
	Rec.	HUMAN	GDF-3
	Rec.	HUMAN	GHRELIN - ACYLATED (GHRELIN-28)
	Rec.	HUMAN	GLP-1/GLUCAGON-LIKE PEPTIDE
	Rec.	HUMAN	GLUCAGON-LIKE PEPTIDE-1 RECEPTOR

H	Rec.	HUMAN	HEAT SHOCK 70kDa PROTEIN 1A/1B
----------	------	-------	--------------------------------

I	Rec.	MURINE	IFN- γ
	Rec.	RAT	IFN- γ
	Rec.	HUMAN	IGF-BP1
	Rec.	HUMAN	IGF-BP2
	Rec.	HUMAN	IGF-BP3
	Rec.	HUMAN	IGF-BP4
	Rec.	HUMAN	IGF-BP5
	Rec.	HUMAN	IGF-BP6
	Rec.	HUMAN	IGF-BP7
	Rec.	HUMAN	IGF-I
	Rec.	MURINE	IGF-I
	Rec.	HUMAN	INSL5/INSL7 HYBRID
	Rec.	HUMAN	INSULIN RECEPTOR
	Rec.	HUMAN	INTERLEUKIN-1RA
	Rec.	HUMAN	INTERLEUKIN-1 α
	Rec.	MURINE	INTERLEUKIN-1 α
	Rec.	RAT	INTERLEUKIN-1 α
	Rec.	HUMAN	INTERLEUKIN-1 β
	Rec.	MURINE	INTERLEUKIN-1 β
	Rec.	RAT	INTERLEUKIN-1 β
	Rec.	HUMAN	INTERLEUKIN-36RA

DIABETOLOGY

A	Nat.	HUMAN	ADIPOCYTE FABP
	Rec.	HUMAN	ADIPOCYTE FABP, Tag-free
	Nat.	HUMAN	ADIPONECTIN
	Rec.	HUMAN	ADIPONECTIN
	Rec.	HUMAN	ADIPONECTIN (HMW-RICH), Tag-free
	Rec.	HUMAN	ADIPONECTIN (Trimeric form)
	Rec.	MOUSE	ADIPONECTIN

PROTEINS INDEX

Rec. HUMAN INTERLEUKIN-36 β
 Rec. HUMAN INTERLEUKIN-36 γ

K Rec. HUMAN KALLISTATIN

L Rec. HUMAN LEPTIN, Tag-free
 Rec. MOUSE LEPTIN, Tag-free
 Rec. RAT LEPTIN, Tag-free
 Rec. HUMAN LEUKOCYTE CELL-DERIVED CHEMOTAXIN-2

N Rec. HUMAN NNT-1/BCSF-3
 Rec. HUMAN NT-4

O Rec. HUMAN OMENTIN
 Rec. HUMAN OSTEOPONTIN

P Rec. HUMAN PAI-2

R Rec. HUMAN REGENERATING PROTEIN 1 ALPHA
 Rec. HUMAN REGENERATING PROTEIN 1 BETA
 Rec. HUMAN REGENERATING PROTEIN 4
 Rec. HUMAN RELAXIN-2
 Rec. HUMAN RELAXIN-3
 Rec. HUMAN RENIN
 Rec. HUMAN RENIN RECEPTOR
 Rec. HUMAN RESISTIN
 Rec. MOUSE RESISTIN
 Rec. RAT RESISTIN
 Rec. HUMAN RESISTIN, Tag-free
 Rec. HUMAN RETINOL BINDING PROTEIN 4

S Rec. HUMAN SCD30 LIGAND
 Rec. HUMAN SECRETAGOGIN
 Rec. RAT SECRETAGOGIN
 Rec. HUMAN sFRP4
 Rec. HUMAN sRAGE

V Rec. HUMAN VASPIN

β Rec. HUMAN β -NGF
 Rec. MURINE β -NGF

ENERGY METABOLISM AND BODY WEIGHT REGULATION

A Nat. HUMAN ADIPOCYTE FABP
 Rec. HUMAN ADIPOCYTE FABP, Tag-free
 Nat. HUMAN ADIPONECTIN
 Rec. HUMAN ADIPONECTIN
 Rec. HUMAN ADIPONECTIN (HMW-RICH), Tag-free
 Rec. HUMAN ADIPONECTIN (Trimeric form)
 Rec. MOUSE ADIPONECTIN
 Rec. MOUSE ADIPONECTIN (Trimeric form)
 Rec. PORCINE ADIPONECTIN
 Rec. RAT ADIPONECTIN
 Rec. HUMAN ADIPONECTIN (GLOBULAR)
 Rec. MURINE ADIPONECTIN
 Rec. HUMAN ADIPONECTIN SOLUTION
 Rec. HUMAN ADIOPHILIN
 Rec. HUMAN AGOUTI-RELATED PROTEIN
 Rec. HUMAN ANGIOPOIETIN-LIKE PROTEIN 3

Rec. HUMAN ANGIOPOIETIN-LIKE PROTEIN 4
 Rec. HUMAN ANGIOPOIETIN-LIKE PROTEIN 6
 Rec. HUMAN APOLIPOPROTEIN D
 Rec. HUMAN APOLIPOPROTEIN M

B Rec. HUMAN BETATROPHIN
 Rec. MOUSE BETATROPHIN
 Rec. RAT BETATROPHIN

C Rec. HUMAN CCL2 (MCP-1)
 Rec. HUMAN CELL DEATH-INDUCING DFFA-LIKE EFFECTOR C
 Rec. HUMAN CHEMERIN
 Rec. HUMAN CNTF
 Rec. RAT CNTF
 Rec. HUMAN CTHRP 1
 Rec. HUMAN CTRP1
 Rec. HUMAN CTRP2
 Rec. HUMAN CTRP3
 Rec. HUMAN CTRP6
 Rec. HUMAN CTRP7
 Rec. HUMAN CTRP8
 Rec. HUMAN CTRP9A

D Rec. HUMAN DECORIN

E Rec. HUMAN ENPP1
 Rec. HUMAN EPIDERMAL FABP, Tag-free

F Rec. HUMAN FAM3B
 Rec. HUMAN FABP 12
 Rec. HUMAN FETUIN-B
 Rec. MOUSE FIBROBLAST GROWTH FACTOR 15
 Rec. HUMAN FIBROBLAST GROWTH FACTOR 19
 Rec. HUMAN FIBROBLAST GROWTH FACTOR 21
 Rec. HUMAN FIBROBLAST GROWTH FACTOR 21, Tag-free
 Rec. MOUSE FIBROBLAST GROWTH FACTOR 21
 Rec. MOUSE FIBROBLAST GROWTH FACTOR 21, Tag-free
 Rec. HUMAN FIBROBLAST GROWTH FACTOR 23 C-TERMINAL PEPTIDE

G Rec. HUMAN gAcrp30/ADIPOLEAN
 Rec. HUMAN gAcrp30/ADIPOLEAN VARIANT
 Rec. HUMAN GANGLIOSIDE GM2 ACTIVATOR
 Rec. HUMAN GHRELIN - ACYLATED (GHRELIN-28)
 Rec. HUMAN GLP-1/GLUCAGON-LIKE PEPTIDE
 Rec. HUMAN GLUCAGON-LIKE PEPTIDE-1 RECEPTOR
 Rec. HUMAN GLUCOSE-REGULATED PROTEIN 78
 Rec. HUMAN GROWTH DIFFERENTIATION FACTOR-3

H Rec. HUMAN HEART FABP

I Rec. HUMAN INSL5/INSL7 HYBRID
 Rec. HUMAN INSULIN RECEPTOR
 Rec. HUMAN INTERLEUKIN-6
 Rec. MURINE INTERLEUKIN-6
 Rec. RAT INTERLEUKIN-6
 Rec. HUMAN INTERLEUKIN-33
 Rec. MURINE INTERLEUKIN-33
 Rec. HUMAN IRISIN

K Rec. HUMAN KALLISTATIN

PROTEINS INDEX

L Rec. HUMAN LEPTIN, Tag-free
 Rec. MOUSE LEPTIN, Tag-free
 Rec. RAT LEPTIN, Tag-free
 Rec. HUMAN LIPOCALIN-2/NGAL

M Rec. RAT MONOCYTE CHEMOTACTIC PROTEIN-1
 Rec. HUMAN MYOSTATIN PROPEPTIDE, Tag-free

N Rec. HUMAN NESFATIN-1
 Rec. HUMAN NEUDESIN

O Rec. HUMAN OMENTIN
 Rec. HUMAN OSTEOPONTIN

P Rec. HUMAN PAI-1
 Rec. HUMAN PARAOXONASE 1
 Rec. HUMAN PIGMENT EPITHELIUM-DERIVED FACTOR

R Rec. HUMAN RELAXIN-3
 Rec. HUMAN RESISTIN
 Rec. MOUSE RESISTIN
 Rec. RAT RESISTIN
 Rec. HUMAN RESISTIN, Tag-free
 Rec. HUMAN RESISTIN-LIKE MOLECULE-BETA
 Rec. MOUSE RESISTIN-LIKE MOLECULE-GAMMA
 Rec. HUMAN RETINOL BINDING PROTEIN 4

T Rec. HUMAN TNF- α
 Rec. MURINE TNF- α
 Rec. RAT TNF- α
 Rec. HUMAN TREFOIL FACTOR 1
 Rec. HUMAN TREFOIL FACTOR 2
 Rec. HUMAN TREFOIL FACTOR 3
 Rec. RAT TREFOIL FACTOR 3

V Rec. HUMAN VASPIN
 Rec. HUMAN VISFATIN

Z Rec. HUMAN ZINC-ALPHA-2-GLYCOPROTEIN

Rec. HUMAN ADIPONECTIN SOLUTION
 Rec. HUMAN PODOCIN

IMMUNE RESPONSE, INFECTION AND INFLAMMATION

Rec. HUMAN 4-1BB LIGAND

A Rec. HUMAN AITRL
 Rec. HUMAN ALLOGRAFT INFLAMMATORY FACTOR 1
 Nat. HUMAN ALPHA-1-ACID GLYCOPROTEIN
 Rec. HUMAN AMPHIREGULIN
 Rec. HUMAN APOLIPOPROTEIN M

B Rec. HUMAN BCA-1/BLC
 Rec. MURINE BCA-1/BLC
 Rec. HUMAN BD-1
 Rec. HUMAN BD-4

C Rec. MURINE C10
 Rec. HUMAN CCL17
 Rec. HUMAN CLUB CELL PROTEIN (CC16)
 Rec. MOUSE CORTICOSTEROID-BINDING GLOBULIN
 Rec. HUMAN CTACK
 Rec. MURINE CTACK
 Rec. HUMAN CXCL12 (SDF-1 α)
 Rec. HUMAN CXCL12 (SDF-1 α)
 Rec. HUMAN CXCL16
 Rec. MURINE CXCL16
 Rec. HUMAN CXCL8 (IL-8)
 Rec. HUMAN CYCLOPHILIN A
 Rec. MOUSE CYCLOPHILIN A
 Rec. RAT CYCLOPHILIN A

E Rec. HUMAN EOTAXIN
 Rec. MURINE EOTAXIN
 Rec. HUMAN EOTAXIN-3
 Rec. HUMAN E-SELECTIN
 Rec. HUMAN EXODUS-2
 Rec. MURINE EXODUS-2

F Rec. HUMAN FETUIN-B

G Rec. HUMAN GALECTIN-1
 Rec. HUMAN GALECTIN-3
 Rec. HUMAN GASTROKINE-1
 Rec. HUMAN GLUCOSE-REGULATED PROTEIN 78
 Rec. HUMAN GP96 (HSP90B1)
 Rec. HUMAN GRANULYSIN
 Rec. MURINE GRANZYME B BACULOVIRUS

H Rec. HUMAN HIGH MOBILITY GROUP PROTEIN B1
 Rec. HUMAN HSP90 CO-CHAPERONE CDC37

I Rec. HUMAN I-309
 Rec. HUMAN IFN- β
 Rec. MURINE IFN- γ
 Rec. RAT IFN- γ
 Rec. HUMAN IFN- Λ 1
 Rec. HUMAN IFN- Λ 2
 Rec. MURINE IFN- Λ 2

GROWTH HORMONE AND FACTOR-RELATED PRODUCTS

E Rec. HUMAN EPIGEN
 Rec. HUMAN EPIREGULIN

I Rec. HUMAN IGFBP-2

CHRONIC RENAL FAILURE

A Nat. HUMAN ADIPONECTIN
 Rec. HUMAN ADIPONECTIN
 Rec. HUMAN ADIPONECTIN (HMW-RICH), Tag-free
 Rec. HUMAN ADIPONECTIN (Trimeric form)
 Rec. MOUSE ADIPONECTIN
 Rec. MOUSE ADIPONECTIN (Trimeric form)
 Rec. PORCINE ADIPONECTIN
 Rec. RAT ADIPONECTIN
 Rec. HUMAN ADIPONECTIN (GLOBULAR)
 Rec. MURINE ADIPONECTIN

PROTEINS INDEX

Rec.	HUMAN	IL-2			
Rec.	HUMAN	IL-34			
Rec.	HUMAN	INTERLEUKIN-1 α			
Rec.	MURINE	INTERLEUKIN-1 α			
Rec.	RAT	INTERLEUKIN-1 α			
Rec.	HUMAN	INTERLEUKIN-1 β			
Rec.	MURINE	INTERLEUKIN-1 β			
Rec.	RAT	INTERLEUKIN-1 β			
Rec.	HUMAN	INTERLEUKIN-3			
Rec.	MURINE	INTERLEUKIN-3			
Rec.	HUMAN	INTERLEUKIN-8			
Rec.	HUMAN	INTERLEUKIN-16			
Rec.	HUMAN	INTERLEUKIN-17B			
Rec.	HUMAN	INTERLEUKIN-17D			
Rec.	HUMAN	INTERLEUKIN-17E			
Rec.	HUMAN	INTERLEUKIN-19			
Rec.	HUMAN	INTERLEUKIN-34			
Rec.	HUMAN	INTERLEUKIN-36RA			
Rec.	HUMAN	INTERLEUKIN-36 β			
Rec.	HUMAN	INTERLEUKIN-36 γ			
Rec.	RAT	INTERLEUKIN-3 β			
Rec.	HUMAN	IP-10			
Rec.	RAT	IP-10			
Rec.	HUMAN	I-TAC			
Rec.	MURINE	I-TAC			
<hr/>					
J	Rec.	MURINE	JE/MCP-1		
<hr/>					
K	Rec.	HUMAN	KALLISTATIN		
<hr/>					
L	Nat.	HUMAN	LACTOFERRIN		
	Rec.	-	LYSOBACTER ENZYMOGENES ARG-C		
<hr/>					
M	Rec.	HUMAN	MCP-2		
	Rec.	MURINE	MCP-2		
	Rec.	HUMAN	MCP-3		
	Rec.	MURINE	MCP-3		
	Rec.	HUMAN	MCP-4		
	Rec.	MURINE	MCP-5		
	Rec.	HUMAN	MDC		
	Rec.	MURINE	MDC		
	Rec.	HUMAN	MIG		
	Rec.	MURINE	MIG		
	Rec.	HUMAN	MIP-1 α		
	Rec.	MURINE	MIP-1 α		
	Rec.	RAT	MIP-1 α		
	Rec.	HUMAN	MIP-1 β		
	Rec.	MURINE	MIP-1 β		
	Rec.	RAT	MIP-1 β		
<hr/>					
N	Rec.	HUMAN	NNT-1/BCSF-3		
	Rec.	HUMAN	NP-1		
<hr/>					
O	Rec.	HUMAN	ONCOSTATIN M		
	Rec.	RAT	ONCOSTATIN M		
	Rec.	HUMAN	OSTEOPONTIN		
<hr/>					
P	Rec.	HUMAN	PDGF-AA		
	Rec.	MURINE	PDGF-AA		
	Rec.	HUMAN	PDGF-AB		
	Rec.	HUMAN	PDGF-BB		
	Rec.	MURINE	PDGF-BB		
	Rec.	HUMAN	PDGF-CC		
	Rec.	HUMAN	PENTRAXIN 3		
	Rec.	HUMAN	PEPTIDOGLYCAN RECOGNITION PROTEIN 1		
	Rec.	CANINE	PROCALCITONIN		
	Rec.	HORSE	PROCALCITONIN		
	Rec.	HUMAN	PROCALCITONIN		
	Rec.	MOUSE	PROCALCITONIN		
	Rec.	PORCINE	PROCALCITONIN		
	Rec.	RAT	PROCALCITONIN		
	Rec.	RHESUS	PROCALCITONIN		
	Nat.	HUMAN	PROSTATE-SPECIFIC ANTIGEN		
<hr/>					
R	Rec.	HUMAN	RANTES		
	Rec.	MURINE	RANTES		
	Rec.	RAT	RANTES		
	Rec.	HUMAN	REGENERATING PROTEIN 1 ALPHA		
	Rec.	HUMAN	REGENERATING PROTEIN 4		
	Rec.	MURINE	RELM β		
<hr/>					
S	Rec.	HUMAN	S100A4		
	Rec.	HUMAN	S100A6		
	Rec.	HUMAN	S100A8		
	Rec.	HUMAN	S100A9		
	Rec.	HUMAN	S100A11		
	Rec.	HUMAN	S100A12		
	Rec.		SARS-CoV NUCLEOCAPSID PROTEIN		
	Rec.	HUMAN	SCD100		
	Rec.	HUMAN	SCD14		
	Rec.	HUMAN	SCD22		
	Rec.	HUMAN	SCD23		
	Rec.	HUMAN	SCD27 LIGAND		
	Rec.	HUMAN	SCD30 LIGAND		
	Rec.	HUMAN	SCD40 LIGAND		
	Rec.	MURINE	SCD40 LIGAND		
	Rec.	MURINE	SDF-1 α		
	Rec.	RAT	SDF-1 α		
	Rec.	HUMAN	SDF-1 β		
	Rec.	MURINE	SDF-1 β		
	Rec.	RAT	SDF-1 β		
	Rec.	HUMAN	SECRETOGLOBIN FAMILY 3A MEMBER 2		
	Rec.	HUMAN	SERGLYCIN		
	Rec.	MURINE	SF-20		
	Rec.	HUMAN	sFAS LIGAND		
	Rec.	HUMAN	sIL-2R α		
	Rec.	HUMAN	sIL-4R α		
	Rec.	HUMAN	sIL-6R α		
	Rec.	HUMAN	SONIC HEDGEHOG (SHH)		
	Rec.	MURINE	SONIC HEDGEHOG (SHH)		
	Rec.	HUMAN	SOX40 LIGAND		
	Rec.	HUMAN	sRANK LIGAND		
	Rec.	MURINE	sRANK LIGAND		
	Rec.	RAT	sRANK LIGAND		
	Rec.	HUMAN	ST2		
<hr/>					
T	Rec.	HUMAN	stNF RECEPTOR TYPE I		
	Rec.	HUMAN	stNF RECEPTOR TYPE II		
	Rec.	HUMAN	TACI (TNFRSF13B)		
	Rec.	HUMAN	TARC		

PROTEINS INDEX

Rec.	HUMAN	TGF-BETA 1
Rec.	HUMAN	TGF-BETA 1
Rec.	HUMAN	TGF-BETA 2
Rec.	HUMAN	TGF-BETA 3
Rec.	HUMAN	TGF-β2
Rec.	HUMAN	TNF-β
Rec.	HUMAN	TREFOIL FACTOR 1
Rec.	HUMAN	TREFOIL FACTOR 2

U Rec. HUMAN ULBP5

W Rec. HUMAN WNT-1

IMMUNOLOGY

C Rec. HUMAN CYCLOPHILIN B

E Rec. HUMAN EXODUS-2
Rec. MURINE EXODUS-2

INFLAMMATORY BOWEL DISEASE

L Nat. HUMAN LACTOFERRIN

S Rec. HUMAN S100A12

IRON METABOLISM

L Nat. HUMAN LACTOFERRIN

LIPOPROTEIN METABOLISM

A Rec. HUMAN APOLIPOPROTEIN A5
Rec. HUMAN APOLIPOPROTEIN D
Rec. HUMAN APOLIPOPROTEIN M

B Rec. HUMAN BETATROPHIN
Rec. MOUSE BETATROPHIN
Rec. RAT BETATROPHIN

C Rec. HUMAN CELL DEATH-INDUCING DFFA-LIKE EFFECTOR C

E Rec. HUMAN ENDOTHELIAL LIPASE

I Rec. HUMAN INSL5/INSL7 HYBRID

L Rec. HUMAN LECITHIN-CHOLESTEROL ACYLTRANSFERASE
Rec. HUMAN LIPOPROTEIN LIPASE

P Rec. HUMAN PAF-AH
Rec. HUMAN PARAOXONASE 1
Rec. HUMAN RELAXIN-3

S Rec. HUMAN S100A12

T Rec. HUMAN TNF-β

METABOLIC SYNDROME

G Rec. HUMAN GANGLIOSIDE GM2 ACTIVATOR

NEURAL TISSUE DAMAGE MARKERS

A Rec. HUMAN
RAT ACTIVIN A
MURINE
Rec. HUMAN ACTIVIN B
Rec. HUMAN ALPHA-DYSTROGLYCAN N-TERMINAL DOMAIN
Rec. HUMAN AMINOACYLASE-1
Rec. HUMAN AMPHIREGULIN

B Rec. HUMAN BMP-5
Rec. HUMAN BRAIN FABP
Rec. MURINE CARDIOTROPHIN-1

C Rec. HUMAN CDNF
Rec. CANINE CLUSTERIN
Rec. HUMAN CLUSTERIN
Rec. HUMAN CLUSTERIN, Tag-free
Nat. HUMAN CLUSTERIN
Rec. RAT CLUSTERIN
Rec. HUMAN CNTF
Rec. RAT CNTF
Rec. CANINE CYSTATIN C
Nat. HUMAN CYSTATIN C
Rec. HUMAN CYSTATIN C
Rec. MOUSE CYSTATIN C
Rec. RAT CYSTATIN C

D Rec. HUMAN DKK-1

E Rec. HUMAN EGF
Rec. MURINE EGF
Rec. RAT EGF
Rec. HUMAN EGF RECEPTOR (EGFR)

F Rec. HUMAN FGF-ACIDIC
Rec. MURINE FGF-ACIDIC
Rec. RAT FGF-ACIDIC
Rec. HUMAN FGF-BASIC
Rec. MURINE FGF-BASIC
Rec. RAT FGF-BASIC

G Rec. HUMAN GANGLIOSIDE GM2 ACTIVATOR
Rec. HUMAN GDNF
Rec. MURINE GDNF
Rec. RAT GDNF
Rec. HUMAN GMF-β
Rec. RAT GRO/KC
Rec. HUMAN GRO/MGSA
Rec. HUMAN GRO-β
Rec. RAT GRO-β/MIP-2
Rec. HUMAN GRO-γ
Rec. MURINE GRO-γ

I Rec. HUMAN I-309
Rec. HUMAN IFN-β

PROTEINS INDEX

Rec. MURINE IFN- γ
 Rec. RAT IFN- γ
 Rec. HUMAN INSL5/INSL7 HYBRID
 Rec. HUMAN INTERLEUKIN-1RA
 Rec. HUMAN INTERLEUKIN-1 α
 Rec. MURINE INTERLEUKIN-1 α
 Rec. RAT INTERLEUKIN-1 α
 Rec. HUMAN INTERLEUKIN-1 β
 Rec. MURINE INTERLEUKIN-1 β
 Rec. RAT INTERLEUKIN-1 β
 Rec. HUMAN INTERLEUKIN-36RA
 Rec. HUMAN INTERLEUKIN-36 β
 Rec. HUMAN INTERLEUKIN-36 γ

J Rec. MURINE JE/MCP-1

K Rec. MURINE KC

M Rec. HUMAN MANF
 Rec. HUMAN MCP-2
 Rec. MURINE MCP-2
 Rec. HUMAN MCP-3
 Rec. MURINE MCP-3
 Rec. HUMAN MCP-4
 Rec. MURINE MCP-5
 Rec. HUMAN MIP-1 α
 Rec. MURINE MIP-1 α
 Rec. RAT MIP-1 α
 Rec. HUMAN MIP-1 β
 Rec. MURINE MIP-1 β
 Rec. RAT MIP-1 β
 Rec. HUMAN MYELIN FABP

N Rec. HUMAN NESFATIN-1
 Rec. HUMAN NEUDESIN
 Rec. HUMAN NEURITIN
 Rec. HUMAN NEUROGLOBIN
 Rec. HUMAN NEUROGLOBIN
 Rec. HUMAN NEUROSERPIN
 Rec. HUMAN NNT-1/BCSF-3
 Rec. HUMAN NT-3
 Rec. HUMAN NT-4

O Rec. HUMAN ONCOMODULIN-1
 Rec. HUMAN OSTEOACTIVIN/GPNMB
 Rec. HUMAN OSTEOPOINTIN

P Rec. HUMAN PDGF-AA
 Rec. MURINE PDGF-AA
 Rec. HUMAN PDGF-AB
 Rec. HUMAN PDGF-BB
 Rec. MURINE PDGF-BB
 Rec. HUMAN PDGF-CC
 Rec. HUMAN PERSEPHIN
 Rec. MURINE PERSEPHIN
 Rec. HUMAN PROSTAGLANDIN D SYNTHASE

R Rec. HUMAN RANTES
 Rec. MURINE RANTES

Rec. RAT RANTES
 Rec. HUMAN REGUCALCIN
 Rec. HUMAN RELAXIN-3
 Rec. HUMAN R-SPONDIN-1

S Rec. HUMAN S100A1
 Rec. HUMAN S100A12
 Rec. HUMAN S100A6
 Rec. HUMAN S100G
 Rec. MURINE SDF-1 α
 Rec. RAT SDF-1 α
 Rec. HUMAN SDF-1 β
 Rec. MURINE SDF-1 β
 Rec. RAT SDF-1 β
 Rec. HUMAN SECRETAGOGIN
 Rec. RAT SECRETAGOGIN
 Rec. HUMAN sIL-2R α
 Rec. HUMAN sIL-4R α
 Rec. HUMAN SLIT2-N
 Rec. HUMAN sRAGE

T Rec. HUMAN sTNF RECEPTOR TYPE I
 Rec. HUMAN sTNF RECEPTOR TYPE II
 Rec. HUMAN TNF- β
 Rec. HUMAN TUBULIN POLYMERIZATION-PROMOTING PROTEIN

V Rec. HUMAN VISININ-LIKE PROTEIN 1

β Rec. HUMAN β -NGF
 Rec. MURINE β -NGF

ONCOLOGY

Rec. HUMAN 6-PHOSPHOGLUCONATE DEHYDROGENASE, DECARBOXYLATING

A Rec. HUMAN RAT ACTIVIN A
 MURINE
 Nat. HUMAN ALPHA-1-ACID GLYCOPROTEIN
 Rec. HUMAN AMPHIREGULIN
 Rec. HUMAN ANGIOPOIETIN-LIKE PROTEIN 3
 Rec. HUMAN ANNEXIN A2
 Rec. MURINE APRIL
 Rec. HUMAN APRIL
 Rec. HUMAN ATPASE INHIBITOR MITOCHONDRIAL

B Rec. HUMAN BETA-MICROSEMINOPROTEIN
 Rec. HUMAN BRAK

C Rec. HUMAN CLAUDIN-4
 Rec. CANINE CLUSTERIN
 Rec. HUMAN CLUSTERIN
 Rec. HUMAN CLUSTERIN, Tag-free
 Nat. HUMAN CLUSTERIN
 Rec. RAT CLUSTERIN
 Rec. HUMAN CTHRP 1
 Rec. HUMAN CTGF
 Rec. HUMAN CXCL8 (IL-8)
 Rec. HUMAN CYCLOPHILIN A
 Rec. MOUSE CYCLOPHILIN A

PROTEINS INDEX

Rec.	RAT	CYCLOPHILIN A	Rec.	RAT	INTERLEUKIN-1 β		
Rec.	HUMAN	CYCLOPHILIN B	Rec.	HUMAN	INTERLEUKIN-3		
Rec.	HUMAN	CYR61	Rec.	MURINE	INTERLEUKIN-3		
Rec.	HUMAN	CYSTEINE-RICH SECRETORY PROTEIN 3	Rec.	RAT	INTERLEUKIN-3 β		
<hr/>							
D	Rec.	HUMAN	DECORIN	Rec.	HUMAN	INTERLEUKIN-7	
	Rec.	HUMAN	DKK-1	Rec.	MURINE	INTERLEUKIN-7	
<hr/>							
E	Rec.	HUMAN	EGF	Rec.	RAT	INTERLEUKIN-7	
	Rec.	MURINE	EGF	Rec.	HUMAN	INTERLEUKIN-8	
	Rec.	RAT	EGF	Rec.	HUMAN	INTERLEUKIN-12	
	Rec.	HUMAN	EGF RECEPTOR (EGFR)	Rec.	MURINE	INTERLEUKIN-12	
	Rec.	HUMAN	ENDOSTATIN	Rec.	HUMAN	INTERLEUKIN-12 p80	
	Rec.	HUMAN	EPHRIN TYPE-A RECEPTOR 2	Rec.	HUMAN	INTERLEUKIN-24	
	Rec.	HUMAN	EPIDERMAL FABP,Tag-free	Rec.	HUMAN	INTERLEUKIN-33	
<hr/>							
F	Rec.	HUMAN	FETUIN A/AHSG	Rec.	MURINE	INTERLEUKIN-33	
	Rec.	HUMAN	FETUIN-B	Rec.	HUMAN	INTERLEUKIN-34	
	Rec.	HUMAN	FGF-20	Rec.	HUMAN	INTERLEUKIN-36RA	
	Rec.	HUMAN	FGF-8	Rec.	HUMAN	INTERLEUKIN-36 β	
	Rec.	HUMAN	FGF-ACIDIC	Rec.	HUMAN	INTERLEUKIN-36 γ	
	Rec.	MURINE	FGF-ACIDIC	<hr/>			
	Rec.	RAT	FGF-ACIDIC	J	Rec.	MURINE	JE/MCP-1
	Rec.	HUMAN	FGF-BASIC	<hr/>			
	Rec.	MURINE	FGF-BASIC	K	Rec.	HUMAN	KALLISTATIN
	Rec.	RAT	FGF-BASIC	<hr/>			
	Rec.	HUMAN	FOLLISTATIN	L	Rec.	HUMAN	LEUKOCYTE CELL-DERIVED CHEMOTAXIN-2
<hr/>							
G	Rec.	HUMAN	GALECTIN-1	Rec.	HUMAN	LIF	
	Rec.	HUMAN	GASTROKINE-1	Rec.	HUMAN	LIN28-TAT	
	Rec.	HUMAN	G-CSF	Rec.		LYSOBACTER ENZYMOGENES ARG-C	
	Rec.	MURINE	G-CSF	<hr/>			
	Rec.	HUMAN	GDF-15/MIC-1	M	Rec.	HUMAN	MAMMAGLOBIN A (FC CHIMERA)
	Rec.	HUMAN	GLUCOSE-REGULATED PROTEIN 78	Rec.	HUMAN	MASPIN	
	Rec.	HUMAN	GP96 (HSP90B1)	Rec.	HUMAN	MCP-2	
	Rec.	HUMAN	GRANULYSIN	Rec.	MURINE	MCP-2	
	Rec.	HUMAN	GREMLIN-1	Rec.	HUMAN	MCP-3	
<hr/>							
H	Rec.	HUMAN	HEREGULIN β -1	Rec.	MURINE	MCP-3	
	Rec.	HUMAN	HERSTATIN, Tag-free	Rec.	HUMAN	MCP-4	
	Rec.	HUMAN	HIGH MOBILITY GROUP PROTEIN B1	Rec.	MURINE	MCP-5	
	Rec.	HUMAN	HSP90 CO-CHAPERONE CDC37	Rec.	HUMAN	M-CSF	
<hr/>							
I	Rec.	HUMAN	IFN- β	Rec.	MURINE	M-CSF	
	Rec.	MURINE	IFN- γ	Rec.	RAT	M-CSF	
	Rec.	RAT	IFN- γ	Rec.	HUMAN	MIA	
	Rec.	HUMAN	IGF-BP1	Rec.	HUMAN	MIDKINE	
	Rec.	HUMAN	IGF-BP2	Rec.	HUMAN	MIDKINE	
	Rec.	HUMAN	IGFBP-2	Rec.	HUMAN	MIF	
	Rec.	HUMAN	IGF-BP3	Rec.	HUMAN	MMP-1	
	Rec.	HUMAN	IGF-BP4	Rec.	HUMAN	MMP-2	
	Rec.	HUMAN	IGF-BP5	Rec.	HUMAN	MMP-3	
	Rec.	HUMAN	IGF-BP6	Rec.		MYCOPLASMA ARGININE DEIMINASE (ADI)	
	Rec.	HUMAN	IGF-BP7	<hr/>			
	Rec.	HUMAN	IL-34	N	Rec.	HUMAN	NEUDESIN
	Rec.	HUMAN	INSULIN RECEPTOR	Rec.	HUMAN	NEUROSERPIN	
	Rec.	HUMAN	INTERLEUKIN-1 α	Rec.	HUMAN	NOV	
	Rec.	MURINE	INTERLEUKIN-1 α	<hr/>			
	Rec.	RAT	INTERLEUKIN-1 α	O	Rec.	HUMAN	ONCOMODULIN-1
	Rec.	HUMAN	INTERLEUKIN-1 β	Rec.	HUMAN	OSTEOACTIVIN/GPNMB	
	Rec.	MURINE	INTERLEUKIN-1 β	Rec.	HUMAN	OSTEOBLAST SPECIFIC FACTOR 2	
<hr/>							
				Rec.	HUMAN	OSTEOPONTIN	
<hr/>							
				P	Rec.	HUMAN	p16-INK4a
				Rec.	HUMAN	p16-INK4a-TAT	
				Rec.	HUMAN	PAI-2	
				Rec.	HUMAN	PDGF-AA	

PROTEINS INDEX

Rec. MURINE PDGF-AA
 Rec. HUMAN PDGF-AB
 Rec. HUMAN PDGF-BB
 Rec. MURINE PDGF-BB
 Rec. HUMAN PDGF-CC
 Rec. HUMAN PECAM-1
 Rec. HUMAN PEPTIDASE INHIBITOR 16
 Rec. HUMAN PLGF-1
 Rec. HUMAN PLGF-2
 Nat. HUMAN PROLACTIN-INDUCIBLE PROTEIN
 Rec. HUMAN PROLINE-RICH ACIDIC PROTEIN 1
 Nat. HUMAN PROSTATE-SPECIFIC ANTIGEN
 Rec. HUMAN PROSTATE-SPECIFIC GENE-1
 Rec. HUMAN PROUROGUANYLIN
 Rec. HUMAN PYRUVATE KINASE M2

R Rec. HUMAN REGENERATING PROTEIN 1 ALPHA
 Rec. HUMAN REGENERATING PROTEIN 4
 Rec. HUMAN REGUCALCIN
 Rec. HUMAN R-SPONDIN-1
 Rec. HUMAN R-SPONDIN-2
 Rec. HUMAN R-SPONDIN-3

S Rec. HUMAN S100A2
 Rec. HUMAN S100A4
 Rec. HUMAN S100A5
 Rec. HUMAN S100A6
 Rec. HUMAN S100A7
 Rec. HUMAN S100A7A
 Rec. HUMAN S100A8
 Rec. HUMAN S100A11
 Rec. HUMAN S100A12
 Rec. HUMAN S100A13
 Rec. HUMAN S100G
 Rec. HUMAN S100P
 Rec. HUMAN SCD22
 Rec. HUMAN SCD30 LIGAND
 Rec. HUMAN SECRETAGOGIN
 Rec. RAT SECRETAGOGIN
 Rec. HUMAN SECRETOGLOBIN FAMILY 3A MEMBER 2
 Rec. HUMAN SERGLYCIN
 Rec. HUMAN sFRP-1
 Rec. HUMAN sOX40 LIGAND
 Rec. HUMAN SPARC/OSTEONECTIN
 Rec. HUMAN STANNIocalcin 1
 Rec. HUMAN STANNIocalcin 2

T Rec. HUMAN TACI (TNFRSF13B)
 Rec. HUMAN TGF-ALPHA
 Rec. HUMAN TGF-BETA 1
 Rec. HUMAN TGF-BETA 1
 Rec. HUMAN TGF-BETA 2
 Rec. HUMAN TGF-BETA 3
 Rec. HUMAN TGF-β2
 Rec. HUMAN THROMBOMODULIN
 Rec. HUMAN THYMOSIN-β4
 Rec. HUMAN TIGAR
 Rec. HUMAN TIGAR-TAT
 Rec. MURINE TRAIL

Rec. HUMAN TREFOIL FACTOR 1
 Rec. HUMAN TREFOIL FACTOR 2
 Rec. HUMAN TREFOIL FACTOR 3
 Rec. RAT TREFOIL FACTOR 3

V Rec. HUMAN VAP-1
 Rec. HUMAN VEGF121
 Rec. HUMAN VEGF165
 Rec. MURINE VEGF165
 Rec. RAT VEGF165
 Rec. HUMAN VEGF-B
 Rec. HUMAN VEGF-D
 Rec. HUMAN VISININ-LIKE PROTEIN 1

W Rec. HUMAN WAP FOUR-DISULFIDE CORE DOMAIN PROTEIN 2
 Rec. HUMAN WNT-1
 Rec. HUMAN WNT1-INDUCIBLE-SIGNALING PATHWAY PROTEIN 1
 Rec. MURINE WNT-3A

Z Rec. HUMAN ZINC-ALPHA-2-GLYCOPROTEIN
 Rec. HUMAN ZYMOGEN GRANULE MEMBRANE PROTEIN 16

OTHERS

A Rec. AEROMONAS AMINOPEPTIDASE
 Rec. HUMAN ANNEXIN A2

B Rec. HUMAN BAFF RECEPTOR
 Rec. HUMAN BETACELLULIN
 Rec. MURINE BETACELLULIN
 Nat. HUMAN BILE SALT-ACTIVATED LIPASE

C Rec. RAT CARBOXYPEPTIDASE-B
 Rec. CANINE CLUSTERIN
 Rec. HUMAN CLUSTERIN
 Nat. HUMAN CLUSTERIN
 Rec. RAT CLUSTERIN
 Rec. HUMAN CONNECTIVE TISSUE GROWTH FACTOR
 Rec. HUMAN CORNIFIN-B
 Rec. HUMAN CYCLOPHILIN F

E Rec. HUMAN ENTEROKINASE

F Rec. HUMAN FAM3A
 Rec. HUMAN FAM3C
 Rec. HUMAN FAM3D
 Rec. HUMAN FABP 12
 Rec. HUMAN FETUIN-B
 Rec. HUMAN FURIN

G Rec. HUMAN GASTROTROPIN
 Rec. HUMAN GDF-11
 Rec. HUMAN GDF-5 (BMP-14/CDMP-1)
 Rec. MURINE GDF-5 (BMP-14/CDMP-1)

H Rec. HUMAN HEAT SHOCK 10kDa PROTEIN, MITOCHONDRIAL
 Rec. HUMAN HEAT SHOCK 70kDa PROTEIN 1A/1B
 Rec. HEPATITIS B VIRUS HEPATITIS B VIRUS PROTEIN X
 Rec. HEPATITIS B VIRUS HEPATITIS B VIRUS PROTEIN X, Tag-free

PROTEINS INDEX

	Rec.		HIV-1 PROTEASE
	Rec.		HIV-2 PROTEASE
I	Rec.	HUMAN	INTESTINAL FABP
K	Rec.	HUMAN	KLF4-TAT
N	Rec.	HUMAN	NANOG
	Rec.	HUMAN	NANOG-TAT
P	Rec.	HUMAN	PAI-1
	Rec.	HUMAN	PARAOXONASE 1
	Rec.	HUMAN	PIGMENT EPITHELIUM-DERIVED FACTOR
	Rec.	HUMAN	PROGUANYLIN
	Rec.	HUMAN	PROKINETICIN-2
	Rec.	HUMAN	PROUROGUANYLIN
S	Rec.	HUMAN	S100A1
	Rec.	HUMAN	S100A2
	Rec.	HUMAN	S100A3
	Rec.	HUMAN	S100A5
	Rec.	HUMAN	S100A6
	Rec.	HUMAN	S100A7
	Rec.	HUMAN	S100A7A
	Rec.	HUMAN	S100A10
	Rec.	HUMAN	S100A11
	Rec.	HUMAN	S100A13
	Rec.	HUMAN	S100A14
	Rec.	HUMAN	S100A16
	Rec.	HUMAN	S100G
	Rec.	HUMAN	SAP PROTEIN
	Rec.	HUMAN	SCD34
	Rec.	HUMAN	SCF
	Rec.	MURINE	SCF
	Rec.	RAT	SCF
	Rec.	HUMAN	sFAS RECEPTOR
	Rec.	HUMAN	SOX2
	Rec.	HUMAN	SOX2-TAT
	Rec.	HUMAN	sRANK RECEPTOR
	Rec.	HUMAN	STRAIL RECEPTOR-1
	Rec.	HUMAN	STRAIL RECEPTOR-2
T	Rec.	HUMAN	THYROSTIMULIN ALPHA SUBUNIT
	Rec.	HUMAN	THYROSTIMULIN BETA SUBUNIT
	Rec.	HUMAN	TIMP-1
	Rec.	HUMAN	TIMP-2
	Rec.	HUMAN	TPO
	Rec.	MURINE	TPO
	Rec.	RAT	TPO
	Rec.	HUMAN	TWEAK RECEPTOR
Z	Rec.	HUMAN	ZYMOGEN GRANULE MEMBRANE PROTEIN 16

PANCREATIC REGULATORY MOLECULES

P	Rec.	HUMAN	PANCREATITIS-ASSOCIATED PROTEIN-1
R	Rec.	HUMAN	REGENERATING PROTEIN 1 ALPHA
	Rec.	HUMAN	REGENERATING PROTEIN 1 BETA
	Rec.	HUMAN	REGENERATING PROTEIN 4

PULMONARY DISEASES

C	Rec.	HUMAN	CLUB CELL PROTEIN (CC16)
M	Rec.	HUMAN	MYOSTATIN PROPEPTIDE, Tag-free
S	Rec.	HUMAN	S100A8
	Rec.	HUMAN	S100A9
	Rec.	HUMAN	SECRETOGLOBIN FAMILY 3A MEMBER 2
V	Rec.	HUMAN	VEGF-D

RENAL DISEASE

A	Rec.	HUMAN	AMINOACYLASE-1
	Rec.	HUMAN	ANGIOTENSINOGEN
C	Rec.	CANINE	CLUSTERIN
	Rec.	HUMAN	CLUSTERIN
	Rec.	HUMAN	CLUSTERIN, Tag-free
	Nat.	HUMAN	CLUSTERIN
	Rec.	RAT	CLUSTERIN
	Rec.	CANINE	CYSTATIN C
	Nat.	HUMAN	CYSTATIN C
	Rec.	HUMAN	CYSTATIN C
	Rec.	MOUSE	CYSTATIN C
	Rec.	RAT	CYSTATIN C
F	Nat.	HUMAN	FETUIN-A (AHSG)
	Rec.	HUMAN	FIBROBLAST GROWTH FACTOR 23 C-TERMINAL PEPTIDE
H	Rec.	HUMAN	HEART FABP
K	Rec.	HUMAN	KIM-1
	Rec.	HUMAN	KLOTHO CHO
L	Rec.	HUMAN	LIPOCALIN-2/NGAL
	Rec.	HUMAN	LIVER FABP
	Rec.	HUMAN	LIVER FABP, Tag-free
O	Rec.	HUMAN	OSTEOACTIVIN/GPNMB
	Rec.	HUMAN	OSTEOPONTIN
	Rec.	HUMAN	PODOCIN
	Rec.	HUMAN	PROGUANYLIN
	Rec.	HUMAN	PROSTAGLANDIN D SYNTHASE
	Rec.	HUMAN	PROUROGUANYLIN
R	Rec.	HUMAN	RENIN
	Rec.	HUMAN	RENIN RECEPTOR
S	Rec.	HUMAN	S100A12
	Rec.	HUMAN	sRAGE
T	Rec.	HUMAN	TREFOIL FACTOR 3
	Rec.	RAT	TREFOIL FACTOR 3
U	Nat.	CANINE	UROMODULIN
	Nat.	FELINE	UROMODULIN

PROTEINS INDEX

Nat. HUMAN UROMODULIN
 Nat. PORCINE UROMODULIN

REPRODUCTION

A Rec. HUMAN AMINOACYLASE-1

C Rec. HUMAN CORNIFIN-B
 Rec. HUMAN CYSTEINE-RICH SECRETORY PROTEIN 1
 Rec. HUMAN CYSTEINE-RICH SECRETORY PROTEIN 2
 Rec. HUMAN CYSTEINE-RICH SECRETORY PROTEIN 3

F Rec. HUMAN FOLLISTATIN
 Rec. HUMAN FRACTALKINE
 Rec. RAT FRACTALKINE

G Rec. HUMAN GDF-15/MIC-1

H Rec. HUMAN HEAT SHOCK 10kDa PROTEIN, MITOCHONDRIAL

L Rec. HUMAN LEPTIN, Tag-free
 Rec. MOUSE LEPTIN, Tag-free
 Rec. RAT LEPTIN, Tag-free

O Rec. HUMAN OMENTIN
 Rec. HUMAN PLACENTAL PROTEIN 13 (GALECTIN-13)
 Nat. HUMAN PROLACTIN-INDUCIBLE PROTEIN
 Rec. HUMAN PROLINE-RICH ACIDIC PROTEIN 1
 Nat. HUMAN PROSTATE-SPECIFIC ANTIGEN

S Rec. HUMAN S100P
 Rec. HUMAN SEX HORMONE-BINDING GLOBULIN CHO
 Rec. HUMAN STANNIOCALCIN 1

T Rec. HUMAN TESTIS FABP

V Rec. HUMAN VASPIN

SEPSIS

C Rec. CANINE CLUSTERIN
 Rec. HUMAN CLUSTERIN
 Rec. HUMAN CLUSTERIN, Tag-free
 Nat. HUMAN CLUSTERIN
 Rec. RAT CLUSTERIN
 Rec. HUMAN CXCL8 (IL-8)

I Rec. HUMAN INTERLEUKIN-8

L Nat. CANINE LEUCINE-RICH ALPHA-2-GLYCOPROTEIN
 Nat. HUMAN LEUCINE-RICH ALPHA-2-GLYCOPROTEIN

P Rec. CANINE PROCALCITONIN
 Rec. HORSE PROCALCITONIN
 Rec. HUMAN PROCALCITONIN
 Rec. MOUSE PROCALCITONIN
 Rec. PORCINE PROCALCITONIN
 Rec. RAT PROCALCITONIN
 Rec. RHESUS PROCALCITONIN

S Rec. HUMAN S100A8
 Rec. HUMAN S100A9

T Rec. HUMAN TREFOIL FACTOR 1
 Rec. HUMAN TREFOIL FACTOR 2
 Rec. HUMAN TREFOIL FACTOR 3
 Rec. RAT TREFOIL FACTOR 3

STEROID HORMONES

C Rec. MOUSE CORTICOSTEROID-BINDING GLOBULIN
 Rec. HUMAN CORTICOTROPIN-RELEASING FACTOR-BINDING PROTEIN

K Rec. HUMAN KLOTHO CHO

S Rec. HUMAN SEX HORMONE-BINDING GLOBULIN CHO

TRANSPLANTATION

Rec. HUMAN 4-1BB LIGAND

A Rec. HUMAN ALLOGRAFT INFLAMMATORY FACTOR 1
 Rec. HUMAN AMINOACYLASE-1

E Rec. HUMAN E-SELECTIN

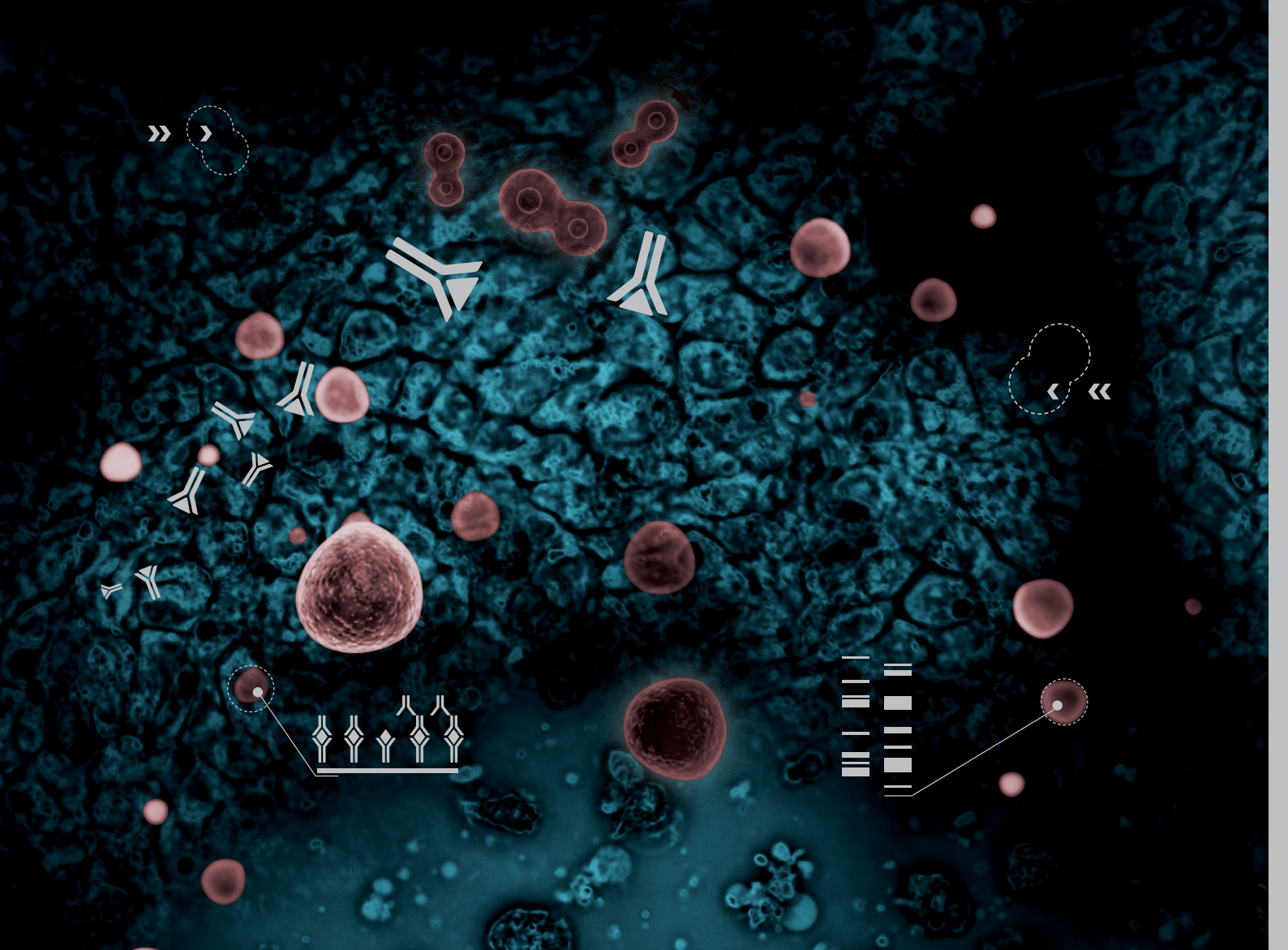
G Rec. HUMAN GRANULYSIN
 Rec. MURINE GRANZYME B BACULOVIRUS

I Rec. MURINE IFN- γ
 Rec. RAT IFN- γ
 Rec. HUMAN INTERLEUKIN-1 α
 Rec. MURINE INTERLEUKIN-1 α
 Rec. RAT INTERLEUKIN-1 α
 Rec. HUMAN INTERLEUKIN-1 β
 Rec. MURINE INTERLEUKIN-1 β
 Rec. RAT INTERLEUKIN-1 β

M Rec. HUMAN MIG
 Rec. MURINE MIG
 Rec. HUMAN MIP-1 α
 Rec. MURINE MIP-1 α
 Rec. RAT MIP-1 α

R Rec. HUMAN RANTES
 Rec. MURINE RANTES
 Rec. RAT RANTES

S Rec. HUMAN SCD40 LIGAND
 Rec. MURINE SCD40 LIGAND
 Rec. HUMAN sIL-2R α
 Rec. HUMAN sIL-4R α
 Rec. HUMAN soX40 LIGAND



BioVendor – Laboratorni medicina a.s.

Research & Diagnostic Products Division
Karasek 1767/1, 621 00 Brno, CZECH REPUBLIC
Phone: +420 549 124 185, Fax: +420 549 211 460
E-mail: info@biovendor.com

Germany and Switzerland:

BioVendor GmbH

Otto-Hahn-Straße 16, 34123 Kassel, GERMANY
Phone: +49 (0)561 861 509 33, Fax: +49 (0)561 861 509 34
E-mail: infoEU@biovendor.com

Austria:

BioVendor GesmbH

Gaudenzdorfer Gürtel 43-45, 1120, Vienna, AUSTRIA
Phone: +43 1 890 9025, Fax: +43 1 890 5163
E-mail: infoAustria@biovendor.com

USA, Canada and Mexico:

BioVendor, LLC

128 Bingham Rd., Suite 1300 Asheville, NC 28806, USA
Phone: +1-800-404-7807, +1-828-575-9250, Fax: +1-828-575-9251
E-mail: infoUSA@biovendor.com

United Kingdom and Ireland:

Oxford Biosystems Ltd

184B Park House, Park Drive
Milton Park, Abingdon, Oxfordshire
OX14 4SR, UNITED KINGDOM
Phone: +44 (0)1235 431390
E-mail: sales@oxfordbiosystems.com

› www.biovendor.com

› www.oxfordbiosystems.com

