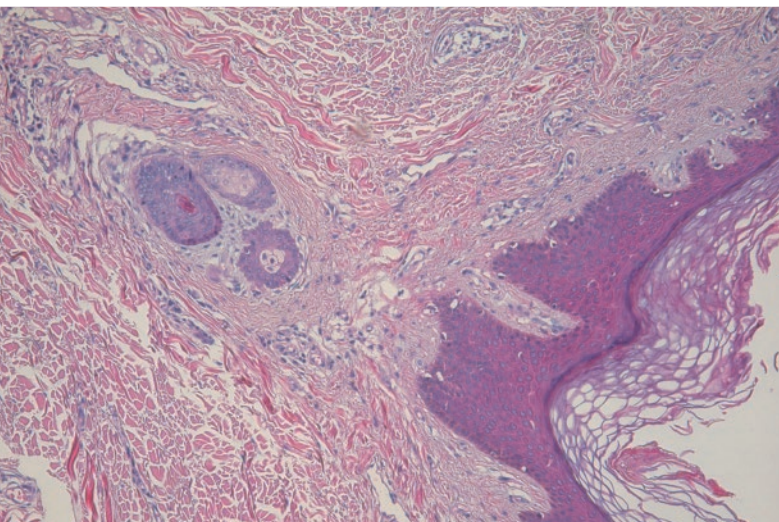
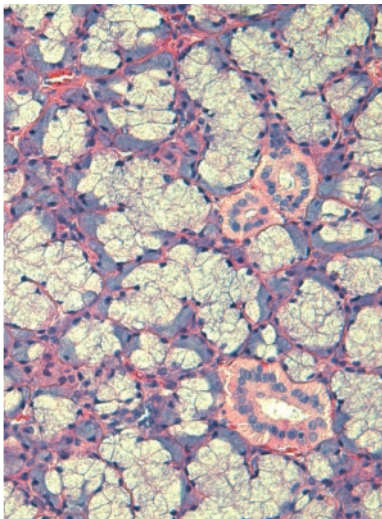
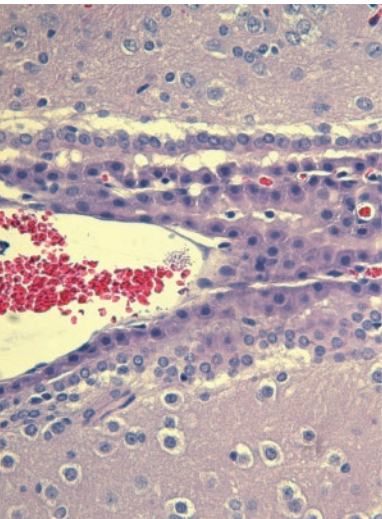


Advancing Cancer Diagnostics
Improving Lives

Leica
BIOSYSTEMS



1



When Minutes Count

Leica ST4020 Linear Stainer

Quickly and easily stain surgical frozen sections with the Leica ST4020. This compact linear stainer is small enough to sit with your cryostat yet fast enough to deal with even the most urgent samples.

SPEED AND PRODUCTIVITY

When a patient needs answers, there really is no time to waste. That's why the Leica ST4020 sits with your cryostat and ensures fast staining of your surgical frozen sections. Full automation means your technicians can start a run, then dedicate their time to other urgent tasks.

- › High capacity – up to 72 slides on the instrument at the same time
- › Fast – total processing time can be as short as 30 seconds
- › Walk-away convenience – collection tank for 16 slides plus a protocol-finished alarm
- › Continuous load – add a rack of four slides at each interval

QUALITY

Just because a slide is urgent, it doesn't mean you can afford to compromise quality. The Leica ST4020 helps you maintain diagnostic quality with fresh reagents, optional agitation and customizable protocols.

- › Use running water for best rinse quality – three stations can be connected to fresh running water
- › Keep reagents fresh – a small container volume (50 mL) facilitates regular reagent changes and keeps costs down
- › Optimize protocols – staining times are easily adjustable
- › Improve performance for long protocols – agitation option assists protocols with long staining periods

FLEXIBILITY

The Leica ST4020 may be small, but it's definitely not limited. Flexible programming means you can optimize protocols and run many sample types. Turn to the Leica ST4020 when you need to run skin samples (Mohs specimens), frozen sections, fine needle aspirations and biopsies.

- › Run a wide range of protocols and tissue types – adjust staining speed between 2 and 300 seconds per station
- › Set the ideal reagent sequence – 14 reagent stations provide flexible sequencing
- › Skip unnecessary steps – a variable start position increases protocol flexibility

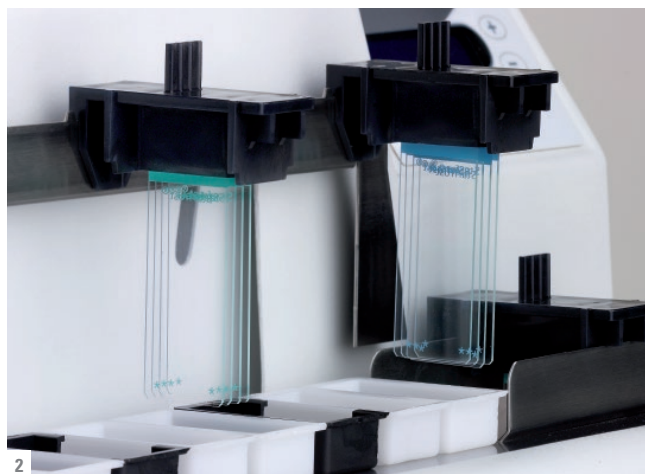
LEICA ST4020 TECHNICAL SPECIFICATIONS

Dimensions

Width:	24.5"	62 cm
Depth:	8"	20 cm
Height:	10"	25 cm
Clearance height:	18.2"	47 cm
Weight:	35 lbs	16 kg

Technical specifications subject to change.

The Leica ST4020 has been designed and manufactured in compliance with UL requirements and carries the UL approval symbol.



1 Collection tank for 16 slides
2 Four slide racks, four slides per slide carrier/rack

Capacity

Staining time:	2 – 300 seconds at each station
Agitation:	0 – 3 dips
Number of reagent stations:	14
Exit tank capacity:	4 slide carriers
Slide carrier capacity:	4 slides
Reagent container volume:	50 mL
Number of rinse stations:	Up to 3